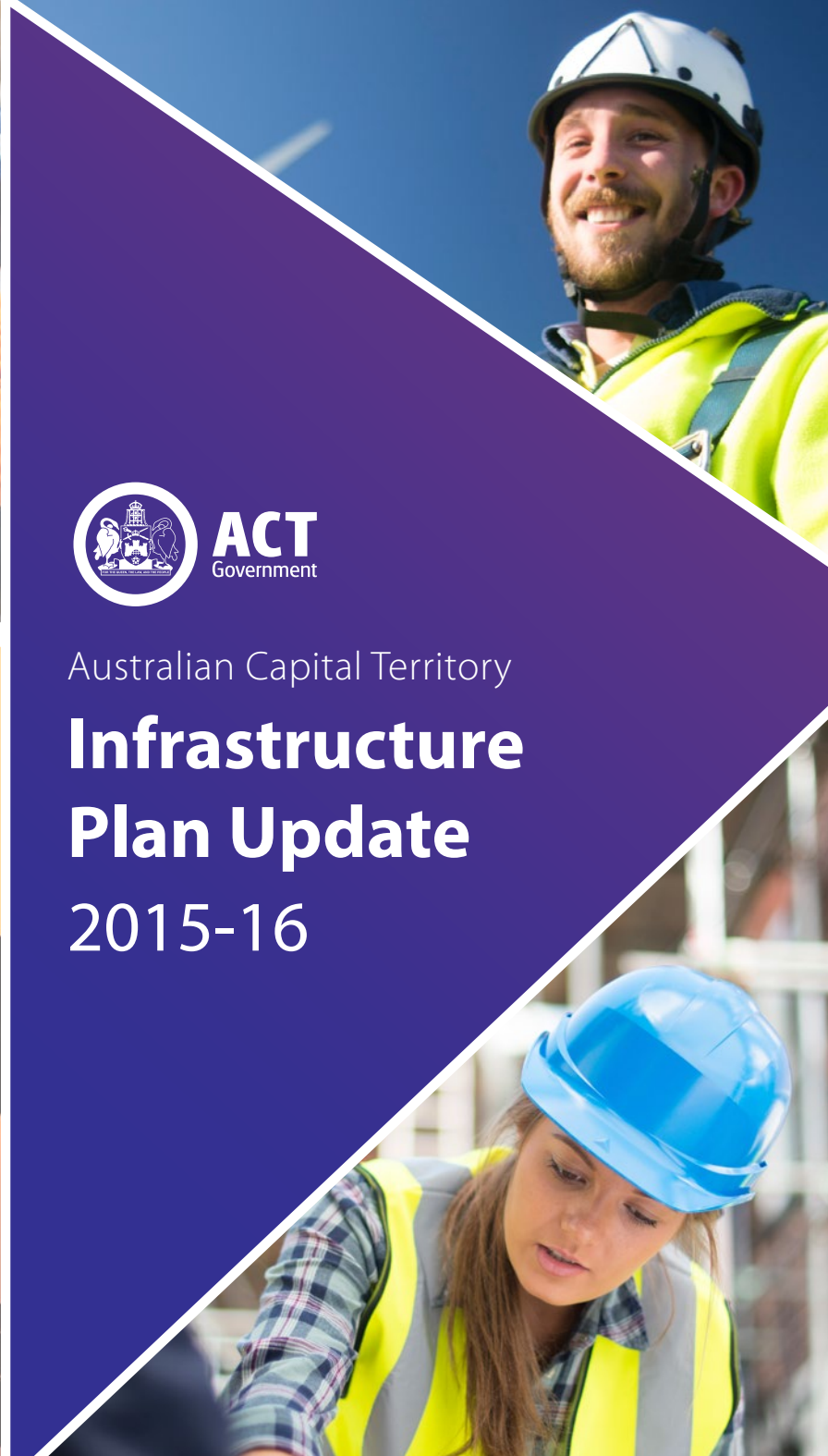




ACT
Government

Australian Capital Territory

Infrastructure Plan Update 2015-16



For Canberra

Contents

Message from the Chief Minister	1
Investing For Canberra	1
Introduction	3
Trends, Issues and Context	4
Demographics and Social Change	5
Strategic Spatial Planning and Development	6
Budget Imperatives	8
The 2015-16 Budget	8
Infrastructure Investment Planning and Delivery	8
ACT Construction Industry	10
Building Activity	10
Engineering Construction	11
The ACT Government's Infrastructure Achievements	12
Health and education investment for Canberra	12
Economic growth and diversification for Canberra	12
Suburban renewal and better transport for Canberra	13
Enhancing liveability and social inclusion for Canberra	13
The ACT Government's Infrastructure Planning Pipeline	14
Government Objective – Health and education investment for Canberra	14
Our Health Services	14
University of Canberra Public Hospital	15
Our Schools	17
Our Trade Training Centres	18

© Australian Capital Territory, Canberra November 2015

Publication No 15/1441

Material in this publication may be reproduced provided due acknowledgement is made.

Produced for the Chief Minister, Treasury and Economic Development Directorate by Publishing Services.

Enquiries about this publication should be directed to the Chief Minister, Treasury and Economic Development Directorate. GPO Box 158, Canberra City 2601
Telephone: Canberra 13ACT1 or 13 22 81

Information and Communication Technology	19
Canberra Institute of Technology	19
Government Objective – Suburban renewal and better transport for Canberra	20
Public Housing Renewal	20
City to the Lake	21
Better Roads and Urban Infrastructure for Canberra	23
Active Living and Sport/Leisure Facilities	24
Government Objective – Economic growth and diversification for Canberra	25
Land Release	25
Major Road Infrastructure	26
Capital Metro	27
City to the Lake – Australia Forum	28
Digital Canberra	28
Government Objective – Enhancing liveability and social inclusion for Canberra	29
ACT Law Courts Facilities Project	29
Greenway Ambulance Station	31
Territory Radio Network upgrade – Phases 2 and 3	31
New Respite Property	31
Significant Infrastructure Projects Being Delivered by Other Entities	32
Canberra Airport	32
ActewAGL	33
Icon Water	33
Capital – Solar Farm Facility at Williamsdale	33
Appendix A	34
Infrastructure Pipeline – Health and education investment for Canberra	34
Infrastructure Pipeline – Suburban renewal and better transport for Canberra	36
Infrastructure Pipeline – Economic growth and diversification for Canberra	40
Infrastructure Pipeline – Enhancing liveability and social inclusion for Canberra	42

A photograph of a construction site for a modern building. In the foreground, a large, dark purple diagonal shape overlaps the image. The background shows a multi-story building under construction with extensive scaffolding. Several construction workers wearing hard hats and safety vests are visible. One worker is on a blue scissor lift. The building has large windows and a dark facade. The text is overlaid on the purple shape.

A record
\$2.8 billion
infrastructure
program



Message from the Chief Minister

Investing For Canberra

The Government's priority is to continue to invest in productive infrastructure for a strong, resilient and growing economy. Our track record is impressive, with Canberra being ranked by the Organisation for Economic Co-operation and Development (OECD) as the most liveable city in the world.

Our sustainable growth strategy includes significant investment in suburban infrastructure and services while providing for major investments in partnership with private investors.

Over the next four years, we will deliver a record \$2.8 billion infrastructure program that invests in roads, health, education, public transport, urban infrastructure and services, the environment and justice and safety. This investment reflects the Government's commitment to delivering high quality, well maintained infrastructure of which we can all be proud.

The 2015-16 Infrastructure Investment Program includes \$234 million for the Urban Renewal Program which provides for a suite of projects to revitalise public infrastructure, improve access to public transport and essential services, and upgrade public amenities.

Some of the major projects funded in the 2015-16 ACT Budget include:

- renewing public housing in the ACT by providing an initial commitment of \$159 million for the delivery of 352 public housing properties to replace ageing public housing stock;
- progressing the first stage of Canberra's light rail network to transform the Northbourne Avenue Corridor;
- a new P-6 school in North Gungahlin which is scheduled to open in January 2019 and accommodate students from pre-school to year six;
- progressing the City to the Lake project to transform the central parts of Canberra into an attractive, vibrant and dynamic destination;
- building the new University of Canberra Public Hospital that will provide health services for our growing population and provide local training and research opportunities in health care; and
- undertaking numerous road infrastructure projects, including better roads in Tuggeranong with the duplication of Ashley Drive and better roads in Gungahlin with the duplication of Gundaroo Drive and Horse Park Drive.

In addition, the 2014-15 Budget included a provision for the development of the new ACT Law Courts which will accommodate the Court of Appeal, Supreme Court, Magistrates Court and Children's Court. A private partner has been selected to design, construct, finance and maintain the facility.

The Government's growth strategy promotes economic diversification, private sector expansion and job creation, the key enablers of economic and social well-being in our second century. In 2015-16 we are investing more than \$20 million to accelerate innovation and support local businesses – the heart of our economy and community.

With our population expected to increase to approximately 681,000 by 2062, we will continue to plan and invest in infrastructure to meet the long-term needs of our growing city. The 2015-16 Infrastructure Investment Program includes transformational projects that will continue to maintain Canberra's status as one of the most liveable cities in the world.

In particular, the City to the Lake development and the Capital Metro Light Rail Network will provide a seamless connection between suburban and city living, and leisure activities, which accommodates future population increases. These developments will also promote growth through increased private sector involvement in infrastructure investment and provision of world-class commercial and business facilities.



Artist's impression of West Basin Project.

Introduction

This document is the annual update to the *ACT Government Infrastructure Plan 2011-2021* for 2015-16. It provides an overview of key infrastructure projects the Government has funded through the 2015-16 Budget, as well as potential major projects that could be progressed over the next decade. In addition to informing the ACT community, this update advises the construction industry and other relevant business sectors of the potential pipeline of projects.

The Government is providing a record level of capital investment across the next four years of \$2.8 billion in the 2015-16 Infrastructure Investment Program. This investment program is a key enabler of economic growth and social cohesion in providing the foundation for economic wealth and social well being for the people of Canberra.

In this context, the ACT Government is committed to a well targeted and integrated investment program as a high priority for the Territory.

The 2015-16 Infrastructure Investment Program includes projects which will help progress the Government's four priority areas:

- Health and Education.
- Economic Growth and Diversification.
- Suburban Renewal and Better Transport.
- Liveability and Social Inclusion.

Appendix A contains a listing of investment projects for each of these priority areas. In recognition of the important role the private sector plays in the provision of infrastructure, certain significant non-government investment initiatives have also been included in this update.



Artist's impression of Capital Metro's proposed city stop.

Trends, Issues and Context

The Government is proud of Canberra's status as the most liveable city in the world. We will work to make our city even better through a growth strategy which includes two key elements:

- investing in infrastructure to meet the needs of our people now and into the future; while
- promoting job creation, long-term economic growth and social well-being through increased private investment for major infrastructure.

In the short term, infrastructure investment provides the necessary stimulus to economic activities and job creation in the Territory. In the longer term, this investment forms the foundation of the delivery of high quality services, a more highly skilled workforce, improved productive capacity, and higher growth potential and living standards for the people of Canberra.

The 2015-16 Budget provides for a record infrastructure investment of \$2.8 billion over the four years to 2018-19. This maintains the impetus of the \$2.5 billion four-year investment program announced in the 2014-15 Budget.

The 2015-16 Infrastructure Investment Program includes significant projects in areas including road and urban infrastructure, land development, education, health and community facilities. A key feature of the Program is a suite of initiatives totalling \$234 million over four years to renew our urban infrastructure and public housing. The Program also includes longer term projects to promote economic growth and well-being for our growing city.

As the ultimate aim of infrastructure investment in a city is to serve the needs of its people, a key driver of the Government's infrastructure planning is future trends in its population growth and socio-demographics.



Artist's impression - community enjoyment of the amenity at Acton.

Demographics and Social Change

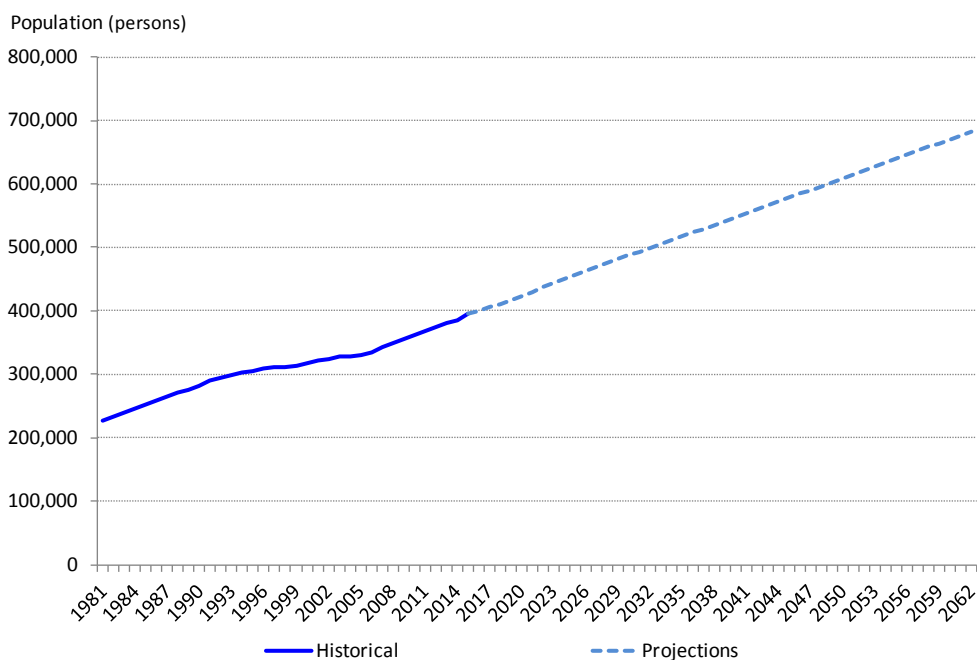
Population growth in the ACT slowed between December 2012 and December 2014, primarily as a result of the effects of the Commonwealth Government job cuts and fiscal consolidation. Over the year to 31 March 2015, the ACT population grew by 1.3 per cent compared to the national average of 1.4 per cent.

Net interstate migration has recorded ten consecutive quarters of outflow from the ACT between December quarter 2012 and March quarter 2015. These outflows have been offset by a positive natural increase (births less deaths) as well as a net inflow from overseas migration.

The Territory's population growth is forecast to remain moderate in 2015-16 at 1.25 per cent.

Over the longer term, the Territory's population is expected to increase at an average annual rate of 1.2 per cent, from 389,747 persons as at 31 March 2015 to a projected 681,000 persons by 2062. In line with national trends and those of developed countries, the ACT's population is ageing with the proportion of those aged 65 years and over expected to increase from 11.8 per cent of the population in 2014 to 22.5 per cent in 2062.

ACT Population Projections: 2014 to 2062
Historical and Projected Population



Source: ABS Cat No. 3101.0 and CMTEDD Projections, January 2014

Strategic Spatial Planning and Development

After extensive engagement with the ACT community, the Government released its Statement of Planning Intent in November 2015. The Statement sets out the key planning priorities for the Government for the next three to five years.

The Statement of Planning Intent builds on the strategic framework set out in the *2012 ACT Planning Strategy*, *Transport for Canberra Policy* and the *ACT Government's climate change strategy and action plan*. Existing planning activities will reflect the directions given in the Minister's Statement as they are progressed.

The growing and diverse needs of ACT residents now and into the future will be accommodated through the planning and development of both green field areas and strategic urban infill locations consistent with the *Canberra Spatial Plan*.

In the next few years the Government will further develop new residential sites in Gungahlin and Molonglo while embarking on a major urban renewal program with a focus on public housing. This dual approach will see the provision of infrastructure services for new developments and augmentation of existing services for established areas. Such service provision also needs to be flexible to meet the needs of people at different life stages.

For information on current and future land development visit <http://www.lda.act.gov.au/en/view-all-developments>. Information on the major urban renewal projects can be found at <http://www.act.gov.au/ococ/autumn-2015-biannual-edition/urban-renewal2>. Information on the public housing renewal program is available at <http://www.act.gov.au/housingrenewal>.



Denman Prospect.

To guide the development of a particular area, the Government prepares *Master Plans* which set out objectives and strategies to manage development and change in the area over time. These Plans are developed in consultation with the community and industry. They focus in particular on group centres, key transport corridors and areas adjacent to town centres.

Since the 2014-15 Infrastructure Plan Update, the Government has finalised a number of Master Plans including those for Oaks Estate, Weston Group Centre, Woden and Mawson.

Work has also continued throughout the year on the:

- Kippax Centre Master Plan;
- Belconnen Centre Master Plan;
- Curtin Centre Master Plan; and
- Calwell Centre Master Plan.



Artist's impression of Weston Group Centre Master Plan.

Budget Imperatives

The 2015-16 Budget

The Infrastructure Investment Program in the 2015-16 Budget provides for new investments in infrastructure of \$587 million over four years. This includes new construction works totalling \$398 million, feasibility studies and forward design projects of \$61 million, plant and equipment of \$13 million, information and communication technology investments of \$59 million, and capital upgrades - to improve and enhance the existing capital assets and infrastructure in the Territory - of \$56 million.

In addition to the new works outlined above, a further \$661 million of works-in-progress is being delivered across the next four years.

The Government has also made provisions of \$1.5 billion for capital works over the next four years. These provisions include amounts for high value and commercially sensitive projects such as the Capital Metro Light Rail Network project and the ACT Courts Facilities.

A key feature of the 2015-16 Budget is the Urban Renewal Program (URP) with funding of \$167 million in 2015-16 and \$234 million over four years. The URP provides for a suite of projects including to revitalise public infrastructure, improve access to public transport and essential services, and upgrade public amenities to encourage more active living.

Infrastructure Investment Planning and Delivery

Maximising economic and social outcomes from infrastructure investment requires not only the selection of projects with high expected rates of return, but also careful planning and management of those projects to minimise costs to the budget and the community.

A central element of the Government's strategy to achieve maximum benefit from our capital investments is *The Capital Framework*, which seeks to improve business case development, service and asset planning, and project definition and scope. This is complemented by the *Partnerships Framework* which provides a framework for managing private sector involvement in the financing, management and delivery of major projects.

Since their implementation in the 2014-15 Budget, *The Capital Framework* and the *Partnerships Framework* have seen the adoption of more cost-effective and efficient integrated delivery models involving the private sector. This has resulted in substantial savings, better management of project risks and high quality infrastructure.

Further savings on the cost of capital are being achieved through the *Asset Recycling Initiative*, where aged assets are disposed of and the proceeds used for the acquisition of new and more efficient and effective assets. In the long term, this integrated approach to planning, delivery and management of infrastructure investment offers significant benefits in leveraging scarce public resources for capital investment.

The Capital Framework

The focus on more cost effective and efficient integrated delivery models under *The Capital Framework* has seen a number of projects undergoing procurement through models other than construct only procurement. The delivery of Charles Weston School - Coombs as a Design Construct Maintain (DCM) project is one key example of integrated procurement, and the successful adoption of integrated delivery models. The ACT Health Directorate has also achieved substantial savings in the delivery of the Calvary Hospital car park through the use of the design and construct delivery model.

As part of the Territory's commitment to improve the delivery of capital projects, a policy implementation review has been initiated to assess the success and any lessons learned from the Framework's first two budget processes. The outcomes of this review are being used to enhance and refine the Framework in future periods.

The Partnerships Framework

The *Partnerships Framework* is now in its second year of operation and continues to guide the Territory's approach to Public Private Partnership (PPP) and Design Construct Maintain Operate (DCMO) delivery models. It also addresses how unsolicited proposals are considered in relation to the Territory's infrastructure program.

The *Partnerships Framework* seeks to reduce the costs of delivery under PPPs for both the Government and bidder by seeking to short-list two proponents at the Request for Proposal stage and by making non-evaluated documentation a condition subsequent to preferred bidder status.

The *Guidelines for Unsolicited Proposals*, which forms part of the Framework, is also in its second year of operation. To date the Territory has received five unsolicited proposals, with two currently under consideration by the Unsolicited Proposals Steering Committee.

Through the Framework and these guidelines, the Territory remains committed to encouraging appropriate private investment and innovative entrepreneurship in the delivery of public infrastructure and services.

Since the Framework's inception, the Territory has embarked on its first two PPP projects, the ACT Courts Facilities and the Capital Metro Project. More details on these projects are provided under the Government Priorities liveability and social inclusion, and economic growth and diversification respectively.

The Asset Recycling Initiative

The *Asset Recycling Initiative* (ARI) agreed between the Commonwealth Government and the ACT Government allows the Territory to benefit from a 15 per cent bonus from the Commonwealth on proceeds of agreed asset sales where these proceeds are allocated to agreed new infrastructure investment. The Capital Metro project will be funded in part by assets sold under the ARI.

ACT Construction Industry

Construction is a major driver of economic activity in the Territory and one the Government is committed to supporting.

The most recent Construction Snapshot was released in May 2015 and shows strong levels of activity in Canberra's commercial and residential construction sectors.

The Snapshot lists projects with values of \$1 million or more, and currently has 441 projects with a combined value of \$7.8 billion. There are 282 projects in progress with a combined estimated value of \$4.1 billion and 159 planned projects with a combined estimated value of \$3.7 billion.



Majura Parkway.

Building Activity

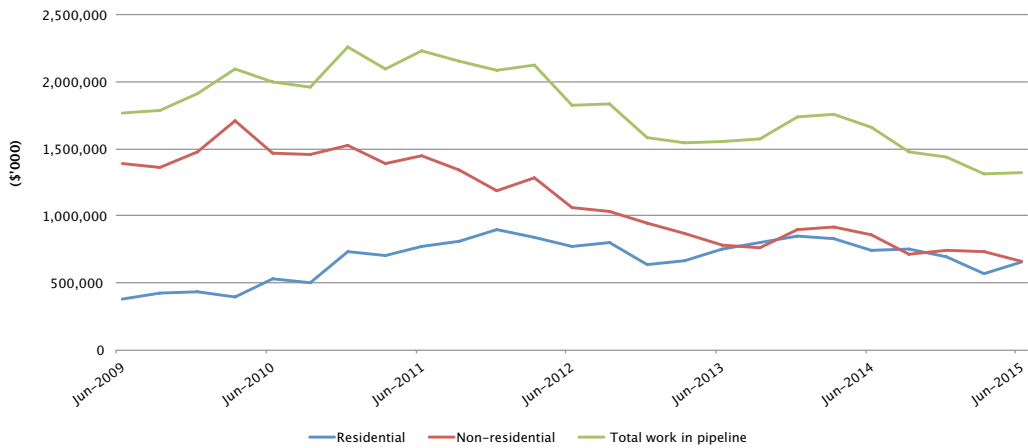
As at the March Quarter 2015, there was \$1.3 billion of building work¹ in the pipeline for the ACT.

This work included non-residential (\$728 million) and residential (\$567 million) sectors.

This follows a steady rise in the pipeline for residential building, particularly over the last six years, whereas non-residential building has been steadily easing since peaking in March 2010.

1. This includes the value of construction work yet to be completed, as opposed to the entire construction cost of the projects as included in the Construction Snapshot. This also excludes engineering construction.

Building Activity – Value of work in the Pipeline (\$)



Source: ABS cat #8752.0 Building Activity, Australia. TABLE 79. Value of Work in the Pipeline, States and Territories, Current Prices, Original.

Engineering Construction

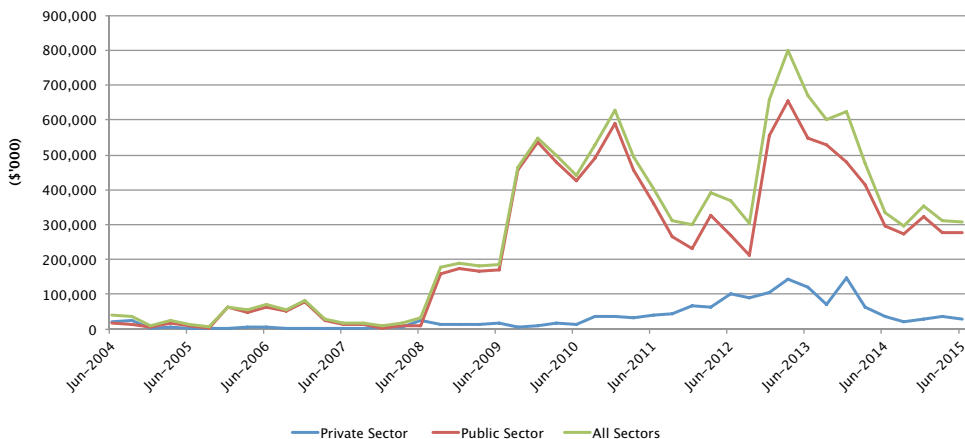
The total value of engineering construction yet to be done as at the June 2015 quarter was \$306 million².

Of this, approximately \$276 million (90 per cent) was for the public sector and \$30 million (10 per cent) was for the private sector.

The majority of engineering construction yet to be undertaken was in roads, highways and subdivisions (36 per cent) the water/sewerage category (30 per cent) and telecommunications (22 per cent).

Major projects such as Capital Metro, the University of Canberra Public Hospital and the ACT Courts Facilities will have a significant impact on construction activity as they come online.

Value of Engineering work yet to be done (ACT)



Source: 8762.0 Engineering Construction Activity, Australia. TABLE 35. Value of Work Yet To Be Done, by Sector, Australian Capital Territory, Original.

2. This includes the value of engineering work yet to be completed, as opposed to the entire construction cost of the projects as included in the Construction Snapshot.

The ACT Government's Infrastructure Achievements

Over the five years to 2014-15, the Government invested over \$2.7 billion in capital works in the Territory.

In addition, the Government owned enterprises of Housing ACT, ACTEW Corporation (now Icon Water), the Land Development Agency and ACT Public Cemeteries Authority have delivered infrastructure totalling \$1.6 billion over the same period.

Significant projects which have been delivered by the Government include the following:

Health and education investment for Canberra

- Centenary Hospital for Women and Children
- Adult Acute Mental Health Inpatient Unit
- Canberra Region Cancer Centre
- Gungahlin Health Centre
- Tuggeranong Health Centre
- Community Health Centre – Belconnen
- New Multistorey Car Park at The Canberra Hospital
- Gungahlin College
- Franklin Early Childhood School
- Namadgi School
- Neville Bonner Primary School
- Harrison Secondary School
- Manuka Oval Lighting
- Gungahlin Pool and Leisure Centre
- Gungahlin Enclosed Oval
- The Canberra Centenary Trail
- Weston Park walking/Cycling Loop Path
- Canberra College Cares – New Building at Phillip Campus

Economic growth and diversification for Canberra

- Enlarged Cotter Dam
- Murrumbidgee to Googong Water Transfer Project
- New Suburb Development including Denman Prospect and parts of Moncrieff and Throsby
- Street Theatre Extension
- Public WiFi rollout at the Canberra Hospital and Gungahlin, Belconnen and Tuggeranong Health Centres

Suburban renewal and better transport for Canberra

- Parkes Way Widening
- Real Time Passenger Information
- John Gorton Drive
- Monaro Highway Duplication
- Belconnen to City Transitway Stage 1 (Barry Drive and College Street Sectors)
- Ashley Drive – Stage 1
- National Arboretum Canberra
- Centenary Trail
- Rectification and Upgrade of Taylor Primary School
- Upgrade of Red Hill and Waramanga Shopping Centres

Enhancing liveability and social inclusion for Canberra

- Gungahlin Sporting and Leisure Facilities
- Accelerating Replacing Stormwater Drains with Wetlands
- West Belconnen Ambulance and Fire and Rescue Station
- ESA Stations Upgrade and Relocation – South Tuggeranong Fire Station
- Flynn Regional Community Hub
- New Belconnen Police Station
- A Place to Call Home
- Tidbinbilla Rural Fire Service Shed

The ACT Government's Infrastructure Planning Pipeline

Government Objective – Health and education investment for Canberra

The Government is continuing to invest in health and education for Canberra as one of our key priorities. Each year we spend around half of the Territory's budget on health and education.

We are setting the foundation for a vibrant and prosperous society by providing for better health and well-being outcomes, greater educational achievement and an enhanced skill base. This is being achieved by building a world-class health care system in the Territory and modernising our education and training system to support best practices in teaching and learning.

The Government is also investing in infrastructure that promotes active living, including a range of sport and recreation infrastructure that helps to promote active lives and social participation.

Our Health Services

Health Infrastructure Program

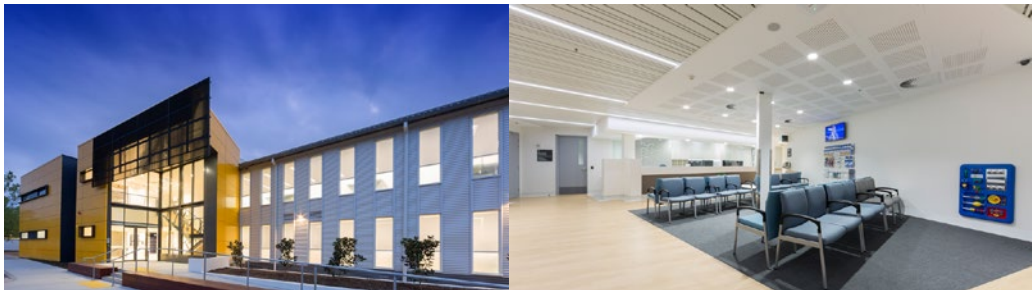
The Health Infrastructure Program (HIP) is the single largest capital works project undertaken in the history of the Territory since self-government. The program involves the overhaul and expansion of all aspects of the ACT Health system to address both the immediate demands on the health sector in the ACT and others that will emerge in the future.

Works under HIP are continuing with progress visible on key projects across the ACT, including the redevelopment and expansion of the Canberra Hospital and Calvary Public Hospital, the construction of the Secure Mental Health Unit, the Ngunnawal Bush Healing Farm and the development of the University of Canberra Public Hospital.

Canberra Hospital

Redevelopment and expansion of facilities at the Canberra Hospital continues.

From three rounds of investment, commencing in 2010-11 with the Continuity of Services Plan, 2012-13 Moving to our Future and in 2014-15 Canberra Hospital Redevelopment, a number of areas on campus have been refurbished and/or relocated as clinical areas. The refurbished areas provide greater amenity for patients and efficiency in layout and workflow, while allowing other areas of the hospital to be redeveloped. The most recent of these to reach completion is the new Building 15, which opened in October 2015 and offers a range of outpatient services. Areas that continue to be progressed to upgrade clinical areas, convert office areas to clinical space and create additional beds include levels 4, 8, and 9 of the main tower block at Canberra Hospital.



Canberra Hospital, Building 15.

Construction for the relocation and upgrade of Sterilising Services on the Canberra Hospital campus is anticipated to commence in October 2016.

The first stage of the Emergency Department expansion, incorporating external works and construction for the Emergency Medical Unit and Mental Health Short Stay Unit is anticipated for completion in December 2015, with operational services moving in early 2016.

The upgrade of in-ground services, such as gas and fire mains supply, is anticipated to be completed in mid-2016, allowing future developments and increased capacity demand on the campus to be supported.

Calvary Public Hospital Upgrades

As a major public hospital serving North Canberra, the Calvary Public Hospital has undergone significant expansion including the construction of a 704 space car park on the Calvary campus. Located on the southern side of the Calvary campus, construction commenced in March 2015, with the program on track for completion and operation in early 2016.

The 2015-16 Budget provides \$9.3 million over four years for operating theatre and medical imaging equipment upgrade at the Calvary Public Hospital. A further \$3.7 million has been allocated for 12 additional acute beds in the Hospital.

Secure Mental Health Facility

Developed to provide specialised mental health care in a secure inpatient environment, the 25 bed purpose built facility is under construction. With main construction works commencing in July 2015, the facility is scheduled for completion and operation in late 2016.

Ngunnawal Bush Healing Farm

The Ngunnawal Bush Healing Farm will be a residential drug and alcohol rehabilitation service for Aboriginal and Torres Strait Islander peoples, 18 years and older, in the ACT and surrounding region. The service will focus on providing an environment that is safe and supportive of people's recovery from the problems associated with alcohol and other drugs. It will provide culturally appropriate prevention, education and rehabilitation programs, working to improve health outcomes for Aboriginal and Torres Strait Islander peoples by addressing the complex issues that relate to alcohol and other drug abuse.

Main construction works commenced in July 2015, for completion in mid 2016. The service is scheduled to commence operations in late 2016.

University of Canberra Public Hospital

The University of Canberra Public Hospital (UCPH) will be part of a networked hospital model which includes Calvary and Canberra hospitals. The new network arrangement, when in place, will improve patient flows and service delivery.

When completed, the hospital will provide 140 inpatient beds and 75 Day Service places. Key services will include rehabilitation, adult mental health and aged care with both inpatient units and day services available in each area. Importantly, provision of the hospital directly addresses the needs of the Rehabilitation and Aged Care Service Plan.

The hospital will also have a teaching and research role in conjunction with the University of Canberra.

The 2015-16 Budget provides funding through capital provisions for the construction of a 400 space car park at the University of Canberra for the University of Canberra Public Hospital.

Scheduled to open in 2018, the detailed models of care for clinical services at the hospital are being finalised. The Development Application for the facility was approved, subject to conditions, in October 2015. A separate Development Application will be lodged by the University of Canberra in 2016 for the 400 space car park that will be developed by them to support the facility.



Artist's impression of the interior and exterior of the University of Canberra Public Hospital.

Our Schools

Our investment in education and training supports population growth and urban expansion. Over recent years a number of schools have been constructed or expanded to deliver quality education to students in Canberra. Schools recently constructed include Neville Bonner Primary School, Franklin Early Childhood School, Harrison Secondary School, Namadgi School and Gungahlin College. Recently expanded or upgraded schools include Macgregor, Majura, Duffy and Taylor Primary Schools.

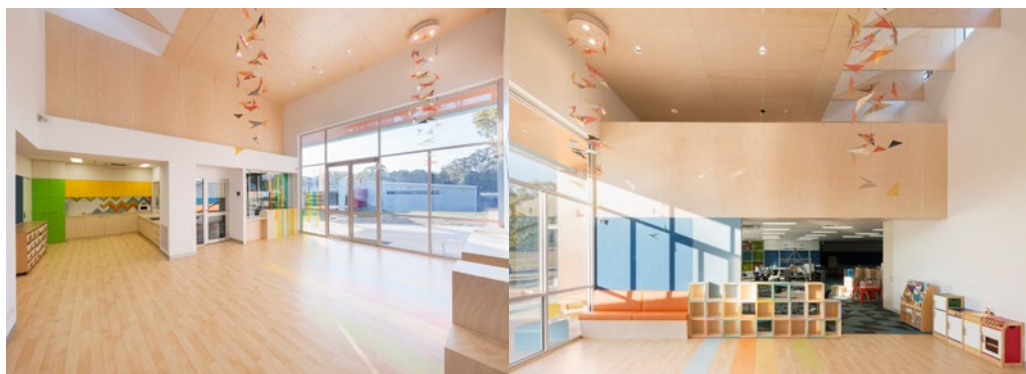
Molonglo Valley and Gungahlin

The Charles Weston School - Coombs is nearing completion and will open for the 2016 school year. This is the first school in the Molonglo Valley region and will accommodate around 700 students from pre-school to year 6 (P-6). The learning spaces and facilities for Charles Weston School - Coombs will support the latest education practices for preschool to year 6 students, high quality indoor and outdoor learning environments and community accessible facilities, including a community hall and sports field.

A new P-6 school at North Gungahlin is to be constructed, and is expected to be opened in January 2019. The School will accommodate around 540 students and provide a contemporary learning environment and modern facilities for the local community. Feasibility studies are also programmed for a Year 7-10 school at North Gungahlin and a P-10 school at Molonglo.

Belconnen High and Caroline Chisholm Schools

To enhance the learning opportunities for students in existing schools, Belconnen High School will be modernised to provide a contemporary learning environment with modern facilities for students and teachers. A new specialist learning centre is also being constructed at Caroline Chisholm School to deliver science, technology, engineering and mathematics programs to students in the Tuggeranong school network. The centre will also provide professional development to all ACT public school teachers.



Wanniasa Hills Primary School - Tuggeranong English Introductory Centre.

Our Trade Training Centres

A central element of the Government's priority in enhancing our skill base is to provide world-class trade skills centres where students can gain nationally recognised qualifications and statements of attainment for their transition to post school pathways.

This is being achieved with the Tuggeranong Sustainable Living Trade Training Centre (TSLTTC) and the Belconnen Regional Trade Skills Centre (BRTSC) which have been established under the umbrella of the Trade Training Centres in Schools Program sponsored by the Australian Government.

Tuggeranong Sustainable Living Trade Training Centre

The TSLTTC has been completed and became fully operational in 2014. The Centre involves a network of seven public high schools and colleges and provides training for students pursuing qualifications and pathways in automotive, construction, horticulture and hospitality. The qualifications delivered are from the National Skills Shortage List and are endorsed by local employers. The public schools involved are Erindale College, Lake Tuggeranong College, Calwell High, Caroline Chisholm High, Lanyon High, Wanniasa School and Namadgi School.

Belconnen Regional Trade Skills Centre

The BRTSC also includes seven public high schools and colleges: UCSSC Lake Ginninderra (Lead School), Hawker College, Melba Copland Secondary School (dual campus), Canberra High School, Belconnen High School, Kingsford Smith School and UCHS Kaleen.

Students at the BRTSC have the opportunity to begin a Certificate I or Prevocational Skills set at the high school level and progress through higher level pathways as part of their ACT Senior Secondary Certificate. Most courses of study include mandatory work placement.

Phase one of works on the BRTSC is nearing completion and students will commence study under the BRTSC banner in February 2016.



Belconnen High School Trade School Centre.

Information and Communication Technology

In addition to the capital works program, significant resources are being invested in school information and communication technology infrastructure to support contemporary learning and teaching in all ACT public schools. Specific initiatives include the provision of wireless access to high speed networks in schools and the development of online services relating to teacher registration, professional learning, teaching standards and professional practice and conduct.

Canberra Institute of Technology

The Government is delivering a new Canberra Institute of Technology (CIT) campus at Tuggeranong and upgrading the existing Bruce and Reid campuses as part of the CIT Campus Modernisation Strategy. This will support increased utilisation of facilities and allow CIT to deliver courses where there is the greatest community demand.

A list of infrastructure projects which are being planned or are underway under the Government objective **Health and education investment for Canberra** is provided in Appendix A.



Charles Weston School - Coombs – New School Construction.

Government Objective – Suburban renewal and better transport for Canberra

Targeted suburban renewal allows better provision of services and improved access to community and leisure activities. It also reduces economic and social stress for those who are most vulnerable, thereby increasing participation, income and independence.

A central element of the Government's strategy to provide suburban renewal and better transport for Canberra is a comprehensive program of public housing renewal. This program aims to ensure that the benefits of urban renewal are shared by all Canberrans.

Urban renewal is also about providing the necessary infrastructure for Canberra City to strengthen its position as the social, cultural and commercial hub of the region. The City to the Lake project will develop the West Basin as a premium water front leisure, sport, commercial and residential precinct. As the first stage of this project, the Government has allocated \$10 million for a new public park and road network enhancements on Commonwealth Avenue to improve access to West Basin.

Our suburban renewal program also includes projects such as roads; active transport and public transport network improvements; enhancing our local shopping centres and other urban areas to create opportunities for growth and improve environmental outcomes; and a range of initiatives that care for our parks and environment.

Public Housing Renewal

The 2015-16 ACT Budget includes an initial commitment of \$159 million over the next two years for the delivery of 352 public housing properties to replace Owen Flats (Lyneham), Allawah Court (Braddon), the Red Hill Housing Precinct (Red Hill) and Karuah (Dickson). The 352 replacement public housing properties will be constructed on sites identified in Monash, Chisholm, Nicholls, Coombs, Moncrieff and Amaroo.

Construction has commenced in Monash and Chisholm. Development Applications have been submitted for all sites and tenders have been awarded for the sites in Monash, Chisholm, Coombs, Moncrieff and Amaroo.

These projects are part of the first phase of the Government's public housing renewal program, which is intended to improve outcomes for public housing tenants in the ACT and support the renewal of Canberra's urban areas. As part of the public housing renewal program, the Government will purchase or construct 1,288 public housing dwellings across Canberra. This will support the local construction industry and provide modern accommodation for public housing tenants.

The new public housing will replace older multi unit public housing properties on Northbourne Avenue and in other locations across Canberra. These sites, once vacated, will be sold for redevelopment.

Work is underway for the demolition of the Currong Apartments in Braddon to prepare the site for sale. This property has been vacant since late 2014 and will be one of the first sites to be sold by the Land Development Agency as part of this program. It will be followed by other sites once current public housing tenants have been supported to move to new homes.



Common Ground Canberra.

City to the Lake

City to the Lake is a key component of the City Plan and a priority of Government for urban renewal. It will transform West Basin into a premium water front leisure, commercial and residential precinct. City to the Lake is being developed in close consultation with other government initiatives, including *Transport Canberra* which provides an integrated public transport system encompassing *Capital Metro* light rail and *ACTION* buses.



West Basin waterfront – development view looking west from the boardwalk towards one of the new pavilions.

City to the Lake is a long-term project. Staging will be refined as further planning work is undertaken and in response to market demand.

- **In the short term;** the current staging construction of the new waterfront; enhanced pedestrian, bicycle and vehicular connections into the precinct and Commonwealth Park; and the first of the premium waterfront sites released to the market for mixed-use residential and commercial developments;
 - the Government has allocated \$10 million in the 2015-16 Budget for a new public park and improvements to the road and path network. These works represent the first stages in the Government's plans to connect the city with Lake Burley Griffin.
- **In the medium term;** the project would involve the realignment of Parkes Way, including the removal of clover leaf intersections; release of further development parcels in the West Basin precinct and City; and construction of the West Basin Aquatic Centre.
- **Longer term** components would include delivery of the Australia Forum project and city stadium; and the release of remaining prominent lakeside sites.



Artist's impression of West Basin waterfront - Bird's-eye view looking west over new public park from Commonwealth Avenue.

Better Roads and Urban Infrastructure for Canberra

To support continued land release in new developments and urban infill locations, ongoing funding is provided to upgrade and enhance road networks across Canberra including in Gungahlin, Molonglo, Dickson and the new suburb of Moncrieff.

Works will also continue on the construction of the link road between Majura Parkway and Majura Road to allow access to new commercial land sites.



Majura Parkway.

Better urban infrastructure is an integral element of the Government's focus on suburban renewal and better transport for Canberra. A range of initiatives are underway to integrate and enhance facilities in key transport and growth corridors, and local urban centres across Canberra.

Notable amongst these initiatives are:

- the upgrade of Constitution Avenue to provide major public transport, infrastructure and landscape improvements for the community with provision for a future Light Rail line; improvements to the Civic to Gungahlin Corridor to facilitate the use of integrated active and public transport along the corridor. This \$42 million project is a gift from the Australian Government to the Territory in celebration of Canberra's centenary;
- redevelopment of the Woden Bus Interchange; and
- upgrades to group and local shopping centres including in Kambah, Weston, Evatt, Florey, Hughes, Torrens, Chapman, Griffith, Theodore, Charnwood and Erindale.



Constitution Avenue.

Active Living and Sport/Leisure Facilities

To promote active living and provide for improved access to facilities, the Government is providing funding to improve public transport facilities, walking and cycling paths, leisure and sport facilities and public spaces.

Extensive cycle and pedestrian networks, and age-friendly improvements, will be constructed across Canberra including in Acton, Barton, Woden, Kingston, Tuggeranong, Molonglo, Belconnen, Kaleen and Oaks Estate.

A sport facility will be constructed at Melrose High School which will provide a new FIFA accredited synthetic football field and a new natural turf grass field. In conjunction with AFL NSW/ACT and Cricket ACT, Phillip Oval will also be upgraded to enhance its capacity to serve as a second-tier facility for AFL and cricket. Planning activities for both projects have commenced with construction due to commence in 2016.



Lyneham Sports Precinct.



Ground works and increasing seat capacity at Manuka Oval.

A list of infrastructure projects which are being planned or underway under the Government objective **Suburban renewal and better transport for Canberra** is provided in Appendix A.

Government Objective – Economic growth and diversification for Canberra

The 2015-16 Infrastructure Investment Program has a strong focus on providing the necessary stimulus to economic activities, diversification and job creation in the Territory.

The Program is underpinned by initiatives to support expansion of the business sector, notably the recent partnership between the ACT Government with the 12 regional councils in the South East Region of NSW to promote the 'Canberra Region Brand'. As a practical demonstration of the Government's efforts to diversify our economy, Qantas Link has relocated heavy maintenance for its Boeing 717 fleet to Canberra with a net creation of around 30 additional jobs.

The Government is also making a significant investment in transformative infrastructure that will redefine Canberra as one of the best cities in which to live and work. The first stages of the Capital Metro Light Rail Network and the City to the Lake development will provide a seamless connection between urban and city living, and leisure activities. This will further consolidate Canberra's status as Australia's most liveable city. In addition, a provision is provided to progress the Australia Forum project following consideration of an economic and delivery options analysis which will be finalised this year.

Land Release

To support Canberra's population and economic growth, and social development of the Territory, the latest four year Indicative Land Release Program (2015-16 to 2018-19) provides for the release of:

- 17,190 residential dwelling sites;
- approximately 248,000 square metres of commercial land;
- 23 hectares of industrial land; and
- 20 hectares of community and non-urban land.

The residential land release program includes sites across four greenfield development fronts (Molonglo 3, Moncrieff, Taylor and Throsby) and many infill locations. In addition to meeting market demand for standard residential sites in new developments, the program reflects the key Government priorities of urban renewal and active development within the Capital Metro light rail corridor, as well as the provision of 300 extra dwelling sites to meet demand associated with the ACT Government's Asbestos Eradication Scheme.

The expected residential land release includes 19 sites as part of the Commonwealth Government's Asset Recycling Initiative. Thirteen of these properties are part of the ACT Government's Public Housing Renewal Program, which will result in the replacement of ageing public housing stock with modern, sustainable homes that better meet the needs of public housing tenants. The other six sites include the sale of four sites in Dickson, Macarthur House in Lyneham and the ACT Government Building at 1 Moore Street in the City.



Artist's impression of the possible look of Discovery Street Red Hill.

Whether developments are undertaken by private developers or the Land Development Agency, trunk infrastructure including major roads, drainage, water supply, sewerage and other services are provided to enable land releases. Significant capital works over the last year include completion of Horse Park Drive and a water quality control pond at Gungahlin, John Gorton Drive at Molonglo 2, Uriarra Road upgrades, ponds at Coombs, trunk water supply and sewers at Denman Prospect, a pedestrian and sewer bridge over the Molonglo River and an access road to IKEA at Majura.

In addition to Budget-funded projects, the LDA is budgeting for infrastructure works in the order of \$82 million in 2015-16.

Major Road Infrastructure

The Government's *Transport for Canberra Policy* has the dual objectives of maximising sustainable and active transport options in urban areas while promoting labour mobility, economic activities and growth through major road infrastructure linking commercial centres and transport hubs.

A key initiative in this area is the construction of the \$288 million Majura Parkway that will seamlessly connect the Federal Highway to the Monaro Highway, enabling better movement of traffic from the north to the south side of Canberra. This project is expected to be completed in 2016.

Further major road infrastructure projects in the pipeline includes stage one duplication of Horse Park Drive, stage one duplication of Gundaroo Drive, stage two duplication of Ashley Drive and bridge strengthening along the Monaro Highway.

Capital Metro

From 1 July 2016, the ACT Government's new single public transport agency, Transport Canberra, will manage Canberra's integrated public transport system which encompasses both Capital Metro light rail and ACTION buses.

Transport Canberra will ensure that buses and light rail are integrated with each other, and with other forms of transport including taxis, cycling and walking. It will also encourage innovative approaches to driving, parking and traffic management. In the years ahead when light rail starts operating, Transport Canberra will ensure efficient integration by delivering a single ticketing, timetabling and fare system across all of Canberra's public transport options.

Within this framework, Capital Metro is moving into a new and exciting phase as the focus shifts towards construction of the City to Gungahlin line in 2016. Another major milestone was achieved with development applications for this first stage and the option for a Russell extension being lodged with the Environment and Planning Directorate in October 2015.

Two potential construction consortia are vying for the contract and professional evaluation of the bids is well underway with the successful bidder to be announced in early 2016.

The Capital Metro project will transform the city by revitalising the Northbourne Avenue corridor, stimulating sustainable urban renewal, helping develop a more diversified economy, and providing alternative and convenient means of public transport.

The project is estimated to support more than 3,500 jobs during construction and when completed will reduce congestion along Canberra's busiest corridor and assist sustainable urban development.

The *Light Rail Network Plan* was also announced in October 2015 for consultation. The Plan examines options for a future light rail network across Canberra that will seek to maximise the significant social, economic and environmental opportunities that light rail could bring to the Territory.

As part of the ACT Government's commitment to consultation on the project, Capital Metro will continue to engage with the community, business and industry to discuss any issues associated with the project.



Artist's impression of Capital Metro Light Rail.

City to the Lake – Australia Forum

Australia Forum would be a convention centre to be constructed as part of the City to the Lake project. The facility will have capability for hosting high profile international events as well as providing convention centre services for the local and regional area.

A provision is provided in the capital works program to progress the project following consideration of economic and delivery options analysis which will be finalised this year.



Artist's impression of the West Basin foreshore.

Digital Canberra

The Government's vision is to accelerate the development of Canberra as a high growth digital economy, where technology plays a key role in assisting Government to better engage with citizens, be more open and transparent and deliver services more efficiently to meet the needs of the community.

The goal of the Digital Canberra Action Plan is threefold: to improve resident and visitor experience; to provide mobile access and services; and to enhance innovative culture. Over the past two years, work has been progressing on the roll-out of the CBRfree Wi-Fi network.

Once complete, the network will be one of the largest free public Wi-Fi networks in Australia.

CBRfree public Wi-Fi is live in Civic East (from Garema Place to the Convention Centre, round to Gorman House and up to Girraheen Street in Braddon), Civic West (Northbourne Avenue to Barry Drive across to the ANU and around to New Acton), Dickson, Belconnen and Manuka.

CBRfree has also been installed indoor at around 50 business and community locations, including at EPIC, Tuggeranong Basketball Stadium and the Criterium Cycling Stadium at Stromlo Forest Park.

CBRfree will go live in Gungahlin, Tuggeranong, Weston Creek, Kingston, Woden and Bruce by mid 2016.

A list of infrastructure projects which are being planned or underway under the Government objective **Economic growth and diversification for Canberra** is provided in Appendix A.



CBRfree Wi-Fi hot spot along Lake Ginninderra Circuit, Belconnen Town Centre.

Government Objective – Enhancing liveability and social inclusion for Canberra

Canberra’s liveability, and the opportunities Canberra offers, compare favourably with most other cities in Australia and elsewhere. The OECD *Regional Well-Being Report 2014* found that, compared with 366 other OECD Regions, the ACT enjoys the highest level of well-being. Specifically, the ACT scored a perfect 10 for income, safety and civic engagement, between 9.0 and 9.9 for health, jobs, education, accessibility to services and environment, and 8.5 for housing.

The ACT Government is a strong supporter of liveability and social inclusion. This has been demonstrated by initiatives such as the introduction of new human rights laws to strengthen cultural rights for Aboriginal and Torres Strait Islanders – and the launch of the “Say No to Racism” program, designed so that ACT Public School students can promote inclusive multiculturalism in their school communities.

ACT Law Courts Facilities Project



University Avenue aerial view.

The ACT Law Courts Facilities Project will involve the redevelopment of the Supreme Court building and its integration with the existing Magistrates Court building. The new Law Courts will create about 350 jobs during construction and, as the Territory’s first Public Private Partnership (PPP), demonstrates the government’s commitment to working innovatively with the private sector to deliver Canberra’s future infrastructure needs.

The ACT Law Courts Facilities, which will include the Court of Appeal and Children's Court, will streamline the court system to improve access to justice. Key features include:

- 18 courtrooms (with capacity to expand to 22 courtrooms) – eight being new build, five having jury capability and all having modern courtroom technology installed;
- separate access and travel routes for Judiciary, Jury, Custodial and Public;
- a dedicated witness zone with video evidence suites and family waiting areas;
- enhanced facilities for community and justice support organisations; and
- an energy efficient building with a photovoltaic array capable of providing base-load power for the entire facility.

In October 2015, Juris Partnership was announced as the preferred proponent for the PPP project, with contractual and financial close is expected to be reached in late 2015. Juris Partnership is a consortium of companies with national and international experience in delivering PPPs, including Laing O'Rourke Australia Construction Pty Ltd, Macquarie Capital Group Limited, Programmed Facility Management Pty Ltd and Lyons architects. Under the PPP contract for the ACT Law Courts Facilities, Juris will be responsible for the design, construction, financing and maintenance of the precinct for the next 25 years.

Construction is expected to commence in 2016. For more information on the ACT Law Courts Facilities and the ACT's *Partnerships Framework* visit <http://apps.treasury.act.gov.au/partnerships-framework>.



The ACT Law Courts - Artist's impression of City Hill exterior view.



Artist's impression of entry interior view of the ACT Law Courts.

Greenway Ambulance Station

The Government is providing funding for an ambulance station at Greenway which is strategically located to service the Tuggeranong region. The Greenway Ambulance Station will be delivered by upgrading and adapting the existing Fire and Rescue Station at Greenway.

This project follows the construction of co-located ambulance and fire rescue stations in Aranda, Charnwood and Tuggeranong. Together, they form part of an ongoing program to modernise and enhance the capability of ambulance and fire rescue services in the Territory.



Charnwood Co-located Fire and Ambulance Station.

Progress on the Greenway Ambulance Station, to date, includes the award of the tender in October 2015 and Development Application approval for works on site. Demolition work is due to commence in November 2015 with expected completion in late April 2016.

The construction of the co-located ambulance and fire rescue station at Aranda is due for completion in early June 2016.

Territory Radio Network upgrade – Phases 2 and 3

To provide essential infrastructure for the Emergency Services Agency and other government agencies to communicate, particularly during emergencies, the Government is continuing to upgrade the Territory Radio Network. In 2015-16, this will involve upgrading the tower infrastructure and the radio and terminal equipment.

New Respite Property

The Government will construct a purpose built respite property for young people aged between 13 and 18 years old to replace an existing respite property currently operated by Disability ACT.

The new respite house will provide positive social benefits for the people who attend this facility, and will help individuals to interact with other people and learn new skills in a domestic setting.

It is expected that the construction will be undertaken in partnership with the private sector.

A list of infrastructure projects which are being planned or underway under the Government objective **Enhancing liveability and social inclusion for Canberra** is provided in Appendix A.

Significant Infrastructure Projects Being Delivered by Other Entities

In addition to the ACT Government infrastructure program, the private sector also plays an important role in the provision of infrastructure across the Territory. A central pillar of the Government's growth strategy for Canberra is to foster the right environment for private sector investment in the Territory.

As a mark of the growth and increased diversification in our economy, the Territory has seen an impressive range of private sector infrastructure investments in the past few years, notably the continuing expansion of facilities at Canberra Airport and the completion of the IKEA complex at Majura Park which opened for business in November 2015.

The Canberra IKEA store is the seventh in Australia and carries the full range of 8,500 products. The complex includes facilities for customer workshops on interior design and will also be used to train more than 250 staff who will be employed at the store.

Substantial ongoing works are also undertaken by utility providers ActewAGL and Icon Water. In addition, significant investment in renewable energy is in the pipeline with the proposed development of a solar farm facility at Williamsdale by Elementus Energy/OneSun Capital. The solar farm will form an integral contribution to the ACT Government's 90 per cent renewable energy target by 2020.

Canberra Airport

Over the period 2009-2013, Canberra Airport invested a total of \$480 million on a complete redevelopment of its terminal precinct. This redevelopment, termed 'AirVolution', is the largest private sector investment in Canberra's history and has delivered a world-class terminal right here in our nation's capital.

Canberra Airport's AirVolution is now in its third and final stage of development. Stage Three AirVolution involves ongoing work in the international zone.

A key feature of AirVolution is the new international facility which allows for flexible use of the departure lounges and aerobridges as domestic or international terminals.

Strategically positioned adjoining the terminal is the new 'Vibe' Hotel which opened in November 2015 with 191 rooms or suites, conferencing facilities, and food and beverage catering for guests and the public.



Vibe Hotel Canberra Airport.

ActewAGL

ActewAGL is Canberra's energy provider. ActewAGL is undertaking a range of significant projects aimed at ensuring the energy needs of Canberra will be met into the future. These projects include:

- **Second bulk supply to the ACT Stage 2:** to be constructed in 2016-17. The completion of this project will ensure that in the event of technical faults, full power supply to the ACT will be maintained by the additional supply infrastructure.
- **Additional Gold Creek 11 kV Switchboard:** the new switchboard will service new residential developments in Moncrieff, Throsby and Taylor, and two new data centres in the Mitchell area.
- **New 11 kV feeder extensions to Lawson and Denman Prospect residential developments:** 11 kV feeders will be extended from Woden, Civic and Belconnen zone substations to supply these developments.

Icon Water

Icon Water provides water and waste water services which are essential for existing community and business needs, and also support economic growth in the ACT. Icon Water is undertaking a number of significant projects, which will allow its network to expand and service the needs of a growing city. The key projects currently underway include:

- **Sewer Mains Rehabilitation:** this is a continuing program to inspect and, where required, rehabilitate the City's ageing sewers. The sewers are either relined or replaced with a new pipeline. The rehabilitation of the sewers allows the continuing management of risks associated with sewer overflows, breaks and chokes.
- **Googong Water Treatment Plant Dewatering Systems:** the project involves the installation of a washwater and sludge handling system at the Googong water treatment plant. The system will relieve the dewatering system from its dependence on evaporation thereby reducing the number of incidents of discharges of turbidity to the environment.
- **Stromlo and Googong Water Treatment Plants Disinfection System Renewal:** this project will see the renewal of the chlorine dosing systems at both of the city's water treatment plants. The existing systems are at the end of their serviceable lives with decreasing reliability and increasing maintenance costs. The project will ensure the high quality of the drinking water supplied to the city.
- **Water Meter Replacement Program:** this involves the upgrade and replacement of aged and unreliable water service connections and meters. The works allow Icon Water to meet its regulatory requirements and commercial imperatives.

Capital – Solar Farm Facility at Williamsdale

Elementus Energy/OneSun Capital are proposing to develop a solar farm facility at Williamsdale, covering an area approximately 32 hectares. The site is located adjacent to the Monaro Highway and Angle Crossing Road intersection

The proposed solar farm is part of the ACT Government's solar auction. Elementus Energy/OneSun Capital is one of three renewable energy companies chosen by the ACT Government to build and operate solar farms in the ACT. The proposed solar farm will be a 10 megawatt facility and will form an integral contribution to the ACT Government's 90 per cent renewable energy target by 2020.

The solar farm has been designed by Clean Technology Partners Pty Ltd for Elementus using a Clean Energy Council Accredited design team. The facilities include solar arrays, cabling, electrical switching structures, a new substation, underground cable connection, internal access tracks and bushfire/rescue tracks.

Appendix A

Infrastructure Pipeline – Health and education investment for Canberra

Project Name	Status
Aboriginal Torres Strait Islander Residential Alcohol & Other Drug Rehabilitation Facility	Construction
Belconnen Regional Trades Skills Centre	Construction
Calvary Public Hospital – Car park	Construction
Canberra Hospital – More beds	Construction
Carbon Neutral Schools – Stage 1	Construction
Childcare Centre Upgrades – Stage 3	Construction
CIT Modernisation – Tuggeranong, Bruce and Reid campuses	Construction
Clinical Services and Inpatient Unit Design and Infrastructure Expansion	Construction
Clinical Services Redevelopment – Phase 2	Construction
Clinical Services Redevelopment – Phase 3	Construction
Continuity of Health Services Plan – Essential Infrastructure	Construction
Charles Weston School - Coombs Construction Funding	Construction
Hazardous Material Removal Program – Stage 3	Construction
Health Infrastructure Program – Project management continuation	Construction
Schools for the Future – Caroline Chisholm School – Centre for Innovation and Learning	Construction
Schools for the Future – Modernising Belconnen High	Construction
Schools for the Future – North Gungahlin and Molonglo	Construction
Schools for the Future – Revitalising school infrastructure	Construction
Secure Mental Health Unit	Construction
Staging and Decanting – Moving To Our Future	Construction
Sterilising Services – Relocation and upgrade	Construction

Project Name	Status
The Canberra Hospital – Essential infrastructure and engineering works	Construction
The Canberra Hospital Redevelopment	Construction
Critical Hospital Infrastructure Systems – Enhancing patient and staff safety	Delivery
ICT—ACT Teacher Quality Institute – Digital service delivery Phase 2	Delivery
Supporting our School System – Improving ICT	Delivery
Staging, Decanting and Continuity of Services	Design
University of Canberra Public Hospital (Design)	Design
Provision for Project Definition Planning	Feasibility
CIT - Capital upgrades	Capital Upgrades
Hospital Upgrades	Capital Upgrades
Public Libraries	Capital Upgrades
School upgrades	Capital Upgrades
Upgrade to Child and Family Centres	Capital Upgrades
Calvary Public Hospital – Car park (Grant component)	Capital Grant
P-10 School in Molonglo	Early Planning

Note: The Government has not yet considered projects listed as 'Early Planning' and they are therefore unfunded. Their progression is contingent on further development and future budget processes.

Infrastructure Pipeline – Suburban renewal and better transport for Canberra

Project Name	Status
ACTION – Replace underground storage tanks	Construction
Better Roads for Gungahlin – Enhanced Town Centre road network	Construction
Better Roads for Gungahlin – Gundaroo Drive duplication – Stage 1	Construction
Better Roads for Gungahlin – Horse Park Drive duplication	Construction
Better Roads for Tuggeranong – Ashley Drive duplication – Stage 2	Construction
City Action Plan Stage 1 – Edinburgh Avenue Improvements	Construction
Civic to Gungahlin Corridor Improvements	Construction
Cravens Creek Water Quality Control Pond	Construction
Dickson Group Centre Intersections – Upgrade	Construction
Essential Waste Management Infrastructure	Construction
Fyshwick Depot – Fuel storage tanks removal and site remediation	Construction
Local Shopping Centre Upgrades Program	Construction
Majura Parkway to Majura Road – Link road	Construction
Molonglo 2 – Sewer and Pedestrian Bridge over Molonglo River	Construction
Molonglo 2 – Uriarra Road Upgrade	Construction
Molonglo 2 – Water Supply, Trunk Sewer and Stormwater Infrastructure – Stage 1	Construction
Molonglo Infrastructure Investment	Construction
Molonglo Riverside Park – Stage 1	Construction
Molonglo Valley – Implementation of NES Plan – Stage 2	Construction
Mugga 2 Quarry – Remediation	Construction
Mugga Lane – Rehabilitation of Old Landfill Cells	Construction
Mugga Lane – Replace asbestos disposal site	Construction
Mugga Lane – Replace damaged septic system	Construction
Playground Safety Program	Construction

Project Name	Status
Shopping Centre Upgrade Program – Red Hill and Lyons	Construction
Throsby – Access road and western intersection	Construction
Transport for Canberra – Upgrading Erindale bus station	Construction
Tuggeranong Lakeside Leisure Centre – Water play park	Construction
Urban Renewal Program – Acton – Sullivans Creek cycle path upgrades	Construction
Urban Renewal Program – Barton – Bowen Park cycle path	Construction
Urban Renewal Program – Better Public Housing	Construction
Urban Renewal Program – Better Public Housing – Allawah Court	Construction
Urban Renewal Program – Better Public Housing – Karuah	Construction
Urban Renewal Program – Better Public Housing – Owen Flats	Construction
Urban Renewal Program – Better Public Housing – Red Hill Housing Precinct	Construction
Urban Renewal Program – City to the lake – West Basin infrastructure	Construction
Urban Renewal Program – Civic and Braddon public realm improvements	Construction
Urban Renewal Program – Erindale Group Centre – Gartside Street (south) development – Stage 1	Construction
Urban Renewal Program – Kambah Group Centre – Public domain improvements – Stage 1	Construction
Urban Renewal Program – Melrose football precinct	Construction
Urban Renewal Program – Oaks Estate river corridor heritage walk improvements – Stage 1	Construction
Urban Renewal Program – Phillip Oval upgrade	Construction
Urban Renewal Program – Phillip trade service area parking management	Construction
Urban Renewal Program – Playground repairs	Construction
Urban Renewal Program – Tuggeranong – Anketell Street (north) upgrade – Stage 1	Construction
Urban Renewal Program – Tuggeranong Valley and Kaleen age friendly facilities	Construction

Project Name	Status
Urban Renewal Program – Weston Group Centre – Brierly Street and Trenerry Square upgrades	Construction
Urban Renewal Program – Woden – Canberra Hospital connections	Construction
West Belconnen Resource Management Centre Rehabilitation of Landfill Cells	Construction
Woden Bus Interchange – Redevelopment Stage 1	Construction
Yarralumla – Canberra Brickworks Site Remediation	Construction
Improving Art Facilities – Safety upgrades	Delivery
North Building – Upgrade of HVAC system	Delivery
Gungahlin Town Centre Roads (Design)	Design
Kenny – Floodways, Road Access and Basins (Design)	Design
Lyneham Sports Precinct – Central Amenities (Design)	Design
Melrose Synthetic Football Facility (Design)	Design
Molonglo 2 – Water Quality Control Ponds, Sewers and Cyclepath (Design)	Design
Narrabundah Ball Park – Stage 2 – Design	Design
Netball Infrastructure Upgrades (Design)	Design
Red Hill Nature Reserve Remediation (Design)	Design
Urban Renewal Program – Kingston Group Centre – Pedestrian and cycling accessibility improvements – Stage 1	Design
Urban Renewal Program – Molonglo 3 infrastructure	Design
Urban Renewal Program – Molonglo to the city cycle highway	Design
Urban Renewal Program – Woden Town Centre cycle and pedestrian network improvements	Design
Chifley – Hindmarsh Drive, Launceston Street and Eggleston Crescent intersection	Feasibility
Continuation of Urban Infill Program (Feasibility)	Feasibility
Dunlop – Lance Hill Avenue and Ginninderra Drive intersection augmentation	Feasibility
East Lake – Planning and Design Framework Implementation (Feasibility)	Feasibility
Greenfields Planning for Affordable Housing (Feasibility)	Feasibility

Project Name	Status
Infill Development Infrastructure Studies (Feasibility)	Feasibility
Molonglo 3 Hydraulic Services Concept Masterplanning (Feasibility)	Feasibility
Molonglo Valley – Finalisation of Stage 2 and Commencement of Stage 3	Feasibility
Pialligo and Airport Road Network	Feasibility
Spence – Kuringa Drive and Owen Dixon Drive intersection augmentation	Feasibility
Urban Development Sequence for Affordable Housing (Feasibility)	Feasibility
Urban Renewal Program – Belconnen Town Centre improved cycling connections	Feasibility
Urban Renewal Program – Tuggeranong Town Centre improved cycling connections	Feasibility
Urban Renewal Program – West Belconnen to the City improved cycling connections	Feasibility
Weetangera – Belconnen Way and Springvale Drive intersection augmentation	Feasibility
Pools Improvement Program	Capital Upgrades
Urban Infrastructure and Equipment	Capital Upgrades
Waste Management Centre Upgrades	Capital Upgrades
Water Resources/Stormwater Improvements	Capital Upgrades
Yarralumla Nursery	Capital Upgrades
Constitution Avenue	Capital Grant
Grant for Development of a New Basketball Centre and Player Amenities	Capital Grant
Lyneham Sports Precinct – Stage 4 tennis facility enhancement	Capital Grant
Public Housing Renewal – Tranche 3	Early Planning

Infrastructure Pipeline – Economic growth and diversification for Canberra

Project Name	Status
Bridge Strengthening on Commercial Routes	Construction
Expansion of the Office of the Legislative Assembly	Construction
National Arboretum Canberra – Event terrace and precinct facilities	Construction
National Arboretum Canberra – Water Security	Construction
Office Accommodation	Construction
Roads to Recovery – Commonwealth funded	Construction
Transport for Canberra – Majura Parkway	Construction
Transport for Canberra – Majura Parkway Off Road Shared Path	Construction
ICT—Government Budget Management System	Delivery
ICT—Land Titles Business Systems Modernisation	Delivery
ICT—Legislative Assembly – Upgrade and Expansion of Audio System	Delivery
ICT—Procedural Document Production System	Delivery
ICT—Simpler Business Licensing	Delivery
ICT—Transport for Canberra – Business system upgrade	Delivery
Refurbishment of the National Convention Centre	Delivery
Transport for Canberra – Business system upgrade	Delivery
City to the Lake – West Basin Public Waterfront (Design)	Design
City to the Lake Arterial Roads Concept Design	Design
ACT Light Rail Master Plan (Feasibility)	Feasibility
City Plan Implementation	Feasibility
City to the Lake – New Canberra Theatre (Feasibility)	Feasibility
Molonglo Valley – Environmental Impact Statement for Deferred Area	Feasibility
Molonglo Valley – Implementation of Commitments in the Plan for the Protection of Matters of National Environmental Significance	Feasibility

Project Name	Status
Federal Highway truck inspection lay-bys	Capital Upgrades
Infrastructure Planning and Design	Capital Upgrades
National Arboretum Canberra	Capital Upgrades
National Highway Upgrade Program	Capital Upgrades
Office of the Legislative Assembly Upgrades	Capital Upgrades
Australia Forum	Business Case Development
Molonglo River Bridge and Approach Roads	Early Planning
University of Canberra Public Hospital Road Upgrade	Early Planning

Note: The Government has not yet considered projects listed as 'Early Planning' and they are therefore unfunded. Their progression is contingent on further development and future budget processes.

Infrastructure Pipeline – Enhancing liveability and social inclusion for Canberra

Project Name	Status
A New Respite Property	Construction
ACT Court Facilities Early Works Package	Construction
Alexander Maconochie Centre – Additional facilities	Construction
Canberra Theatre Centre Upgrade – Stage 2	Construction
Canberra Theatre Centre Upgrades – Stage 3	Construction
Disability Dual Occupancy Housing	Construction
Emergency Services Agency Station Upgrade and Relocation – Aranda Station	Construction
Enhancing the Protection of Endangered Species and Habitat	Construction
Expansion of Public Housing Energy Efficiency	Construction
Lanyon Heritage Precinct – Stormwater systems upgrade	Construction
Public Arts Scheme	Construction
Security Improvement Program for Elderly Public Housing Tenants	Construction
Strategic Bushfire Management Plan	Construction
Strengthening Emergency Services – Greenway Ambulance Station	Construction
Stromlo Forest Park-Implementation of bushfire management plan	Construction
Support for People with Disability – New respite property	Construction
ICT—Client Management System for Child and Youth Protection Services	Delivery
ICT—Domestic Animal Services Incident Management System	Delivery
ICT—Strengthening Emergency Services – New Direct Turnout System	Delivery
ICT—Strengthening Emergency Services – Territory Radio Network upgrade – Phases 2 and 3	Delivery
Improving Art Facilities – Safety upgrades	Delivery
Disability Housing – Respite and Congregate Living Housing (Design)	Design
Strengthening Emergency Services – Upgrade of facilities	Design

Project Name	Status
Belconnen Arts Centre Stage 2 (Feasibility and Forward Design)	Feasibility
Gungahlin Joint Emergency Services Centre – Future Use Study	Feasibility
ICT—ACT Corrective Services Information Management Solution	Feasibility
Kingston Visual Arts Hub (Feasibility)	Feasibility
More Men's Sheds	Feasibility
Stromlo Forest Park – Enclosed Oval (Feasibility)	Feasibility
Aboriginal Scar Tree relocation to Namadgi National Park	Capital Upgrades
Arts Facilities	Capital Upgrades
Community Services Facilities Upgrades	Capital Upgrades
Heritage buildings upgrades	Capital Upgrades
Justice and Community Safety Facilities Upgrades	Capital Upgrades
Museums, Galleries and Art facilities upgrades	Capital Upgrades
Stromlo Leisure Centre	Early Planning

Note: The Government has not yet considered projects listed as 'Early Planning' and they are therefore unfunded. Their progression is contingent on further development and future budget processes.

