

# Estimated Resident Population — September Quarter 2023

## ABS Release: National, state and territory population



**ACT**  
Government

Chief Minister, Treasury and  
Economic Development

Publication Release Date: 21 March 2024 | Next Release Date: 13 June 2024

### ACT's population increased 0.6 per cent in the September quarter 2023

At the end of the September quarter 2023, the ACT's estimated resident population was 469,194 persons, an increase of 0.6 per cent (2,628 persons) over the quarter. Net overseas migration was the largest contributor to growth. Natural increase also contributed positively to growth, but interstate migration recorded a net outflow from the ACT.

Through the year to the September quarter 2023, the ACT's estimated resident population increased by 2.1 per cent (9,579 persons). Both natural increase and net overseas migration contributed positively to through the year growth for the ACT while net interstate migration detracted from growth.

**Nationally**, the population grew by 0.6 per cent for the September quarter 2023 and 2.5 per cent (659,800 persons) through the year. The growth was driven by both natural increase and net overseas migration. The ABS noted that "net overseas migration drove 83 per cent of the annual population growth, while natural increase accounted for the remaining 17 per cent. Net overseas migration grew by 60 per cent compared with the previous year, driven by an increase in overseas migration arrivals (up 34 per cent), predominantly on a temporary visa for work or study".

Through the year to 30 September 2023, Western Australia was the fastest growing state (3.3 per cent) followed by Victoria (2.9 per cent) and Queensland (2.7 per cent). Tasmania recorded the slowest growth rate (0.3 per cent).

### Estimated Resident Population<sup>1</sup> as at 30 September 2023 State / Territory Comparison — Original data

State/Territory	Number	% Change	
		Quarterly	Through the year
New South Wales	8,394,714	0.6	2.3
Victoria	6,865,358	0.7	2.9
Queensland	5,495,524	0.6	2.7
South Australia	1,860,054	0.4	1.7
Western Australia	2,905,922	0.9	3.3
Tasmania	573,328	0.0	0.3
Northern Territory	252,469	0.0	0.7
<b>Australian Capital Territory</b>	<b>469,194</b>	<b>0.6</b>	<b>2.1</b>
Australia <sup>a</sup>	26,821,557	0.6	2.5

Source: ABS Release: *National, state and territory population*.

(a) Includes other Territories comprising Jervis Bay, Christmas Island, and the Cocos (Keeling) Islands.

<sup>1</sup> The quarterly estimated resident population (ERP) is based on the results of the **2021 Census of Population and Housing**, with estimates made for each of the components of change. The quarterly ERP for Australia is compiled by adding the component of natural increase (births minus deaths) and the component of net overseas migration (migrant arrivals minus migrant departures) to the ERP at the beginning of each period. For the States and Territories, account is also taken of estimated interstate movements involving a change of usual residence. Further information about this publication is available on the ABS website: <https://www.abs.gov.au/statistics/people/population/national-state-and-territory-population/latest-release>.

**Quarterly Change in Estimated Resident Population by Component as at 30 September 2023,  
ACT and Australia**

	<i>Natural Increase Persons</i>	<i>Net Overseas Migration Persons</i>	<i>Net Interstate Migration Persons</i>	<i>Total Change Persons</i>
ACT	620	2,649	-641	2,628
Australia	27,435	145,244	-	172,679

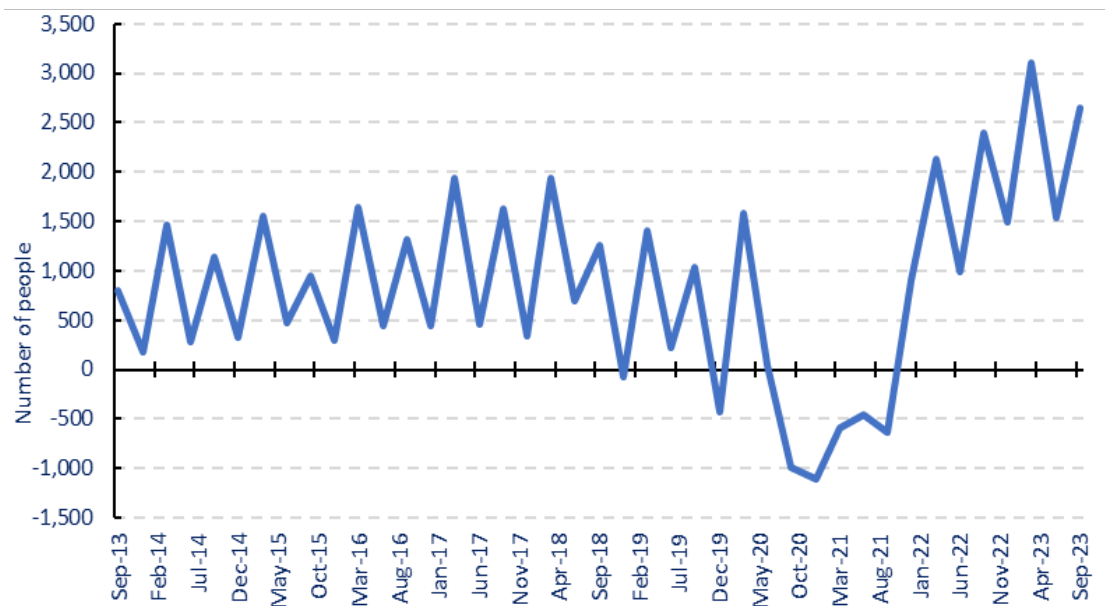
Source: ABS Release: *National, state and territory population.*

**Over the Year Change in Estimated Resident Population by Component as at 30 September 2023,  
ACT and Australia**

	<i>Natural Increase Persons</i>	<i>Net Overseas Migration Persons</i>	<i>Net Interstate Migration Persons</i>	<i>Total Change Persons</i>
Australian Capital Territory	2,632	8,792	-1,845	9,579
Australia	111,025	548,770	-	659,795

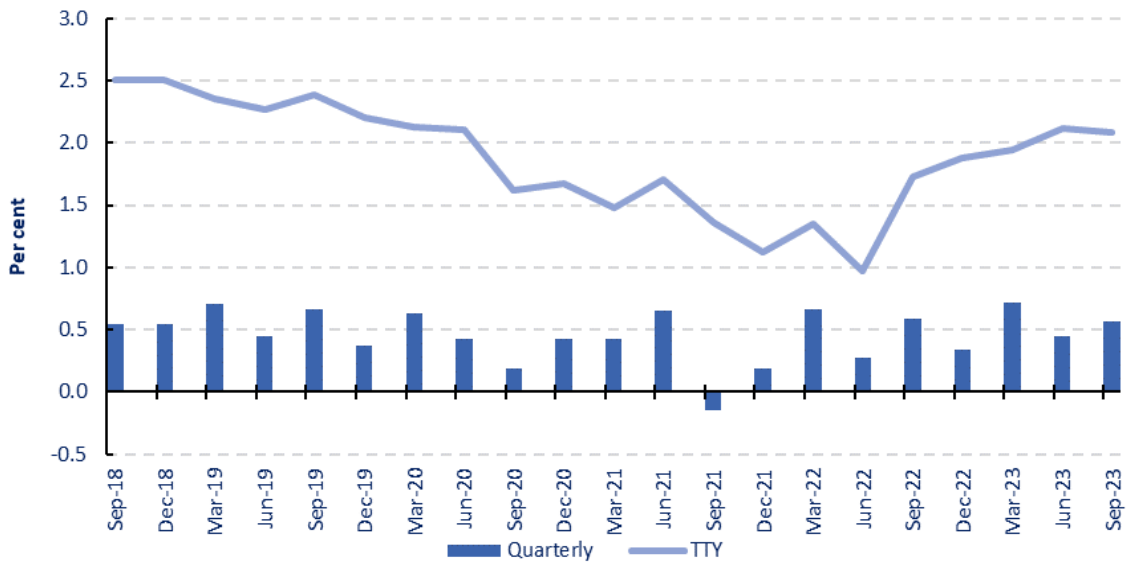
Source: ABS Release: *National, state and territory population.*

**Quarterly Movements in Net Overseas Migration, ACT**



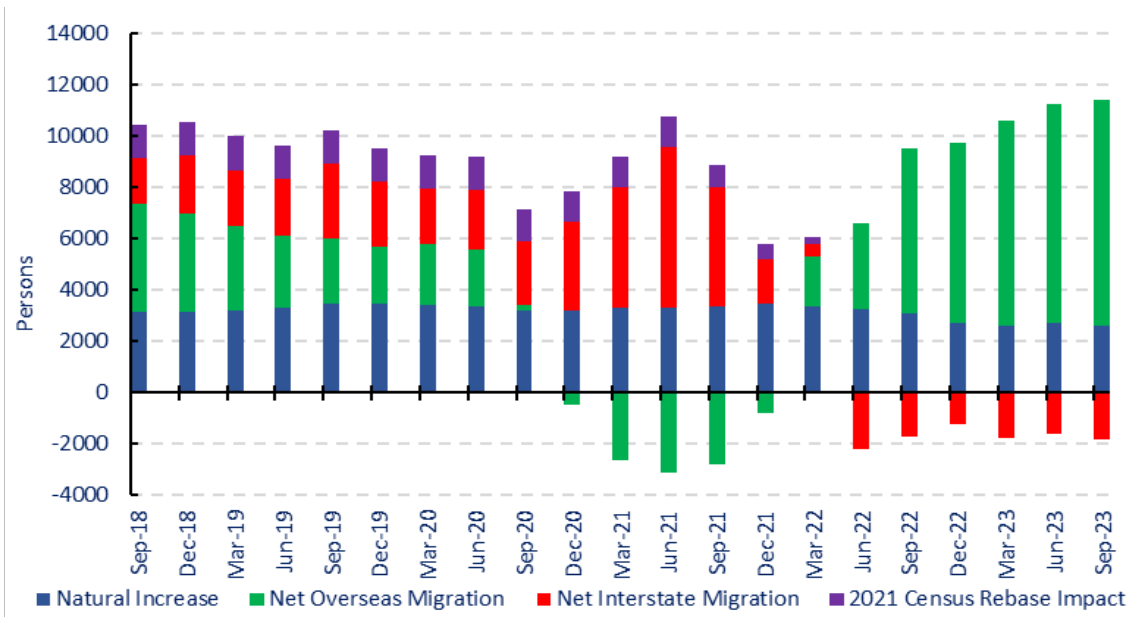
Source: ABS Release: *National, state and territory population.*

### Growth in Estimated Resident Population, ACT



Source: ABS Release: National, state and territory population

### Through the Year Population Change by Component, ACT



Source: ABS Release: National, state and territory population

**Note:** Population components prior to September quarter 2021 may not sum to total population growth due to intercensal difference. *Intercensal difference* is the difference between the preliminary ERP for 30 June in a Census year (carried forward from the previous Census base using births, deaths and migration data) and the final ERP for the same time point (based on the new Census). The intercensal difference by age and sex for each state and territory is spread evenly across the intercensal quarters. Thus, intercensal difference acts as a balancing item that when combined with births, deaths and migration equals total population growth for that period.

## Definitions

**Natural increase** is estimated using the estimated number of births less the estimated number of deaths. Data is obtained from states/territories Registry of Births, Deaths and Marriages.

**Net overseas migration** - For the purposes of net overseas migration and therefore estimated resident population, a person is regarded as a usual resident if they have been (or expected to be) residing in Australia for a period of 12 months or more. As such, the estimated resident population includes all people, regardless of nationality, citizenship or legal status, who usually live in Australia, with the exception of foreign diplomatic personnel and their families. These 12 months do not need to be continuous and are measured over a period of 16 months using a 12/16 month rule where incoming overseas travellers (who are **not** currently counted in the estimated resident population) must be resident in Australia for a total period of 12 months or more, during the 16-month follow-up period to then be added to the estimated resident population. Similarly, those travellers departing Australia (who are currently counted in the estimated resident population) must be absent from Australia for a total of 12 months or more during the 16-month follow-up period to then be subtracted from the estimated resident population.

**Net interstate migration** cannot be directly measured and is estimated using the information on interstate changes of address from Medicare records produced by the Department of Human Services and the Department of Defence (in the case of the military personnel).