

ACT HEALTH

Objectives

ACT Health aims to increase the community's capacity for healthy living by planning, providing and purchasing quality community based health services, major trauma and tertiary health care, managing public health risks, and promoting health and early care interventions.

In providing services, ACT Health's objectives are to:

- increase the community's capacity to live healthily;
- ensure access to health and community services is fair and equitable;
- ensure health services in the community are appropriate and of a high quality;
- meet the health needs of an ageing population;
- gain best value for the community through promoting efficiency and sound resource management;
- meet consumers' needs for services that are better coordinated and integrated;
- focus on prevention and early intervention throughout people's lives;
- improve the good health of the Canberra population and narrow the health gap between the general community and the poor and disadvantaged;
- strengthen the health of the community through a whole of government approach to health issues, together with community partnerships to develop sustainable social care supports;
- support an active lifestyle at all stages of people's lives;
- improve mental health and reduce the barriers facing people with mental health problems;
- reduce harm from alcohol and other drug use;
- ensure quality information drives effective decision making; and
- build an effective organisation with a skilled, satisfied and accountable workforce.

2005-06 Highlights

Strategic and operational initiatives to be pursued in 2005-06 include:

- providing an additional 20 medical beds in the ACT's public hospitals with 12 additional beds at Calvary Hospital and 8 additional beds at The Canberra Hospital;
- implementing an Elective Surgery Reform Program which will overhaul the management of elective surgery in the ACT. This will ensure those patients with the highest clinical need receive more timely access to surgery, with a reduced likelihood of cancellations. This will deliver an additional 300 elective surgery episodes in 2005-06, rising to 400 in 2006-07;

- providing additional funding for purchase of medical equipment and occupational health and safety equipment;
- introducing a digital imaging transmission for film based imaging services through the procurement of an integrated Picture Archival Communication System;
- developing, establishing, promoting and implementing an ACT wide re-entry and refresher program for nurses;
- continuing the pilot Intermittent Care Service to test the effectiveness and efficiency of combining health and aged care funding to provide short-term care services for older persons;
- meeting growth in demand for medical oncology services;
- establishing Nurse Practitioner positions across ACT Health;
- strengthening the ACT's capacity to provide allied health services through the creation of a Certificate Level IV course for Allied Health Assistants; and
- implementing, enhancing and supporting a range of clinical information technology projects including the national e-health transition authority, mental health information system, laboratory information systems, clinical record information system, shared care system, health provider directory, and electronic referrals.

Output Classes

	Total Cost		Government Payment for Outputs	
	2004-05	2005-06	2004-05	2005-06
	Est. Outcome \$'000	Budget \$'000	Est. Outcome \$'000	Budget \$'000
Output Class 1				
Health and Community Care	635 018	671 273	502 509	533 205
Output 1.1 Acute Services	429 726	447 104	316 049	328 276

Output Description

The Government provides public hospital services at The Canberra Hospital and Calvary Public Hospital. These public hospitals provide the full range of acute care including inpatient, outpatient and emergency department services. Both hospitals are teaching hospitals in cooperation with the ANU Medical School. The Canberra Hospital is the major trauma referral hospital for the ACT and surrounding region of NSW.

The key strategic priority for acute services is to deliver timely access to effective, safe, hospital care services. This means focussing on:

- reducing waiting times for admission to a hospital bed through emergency departments, with a specific emphasis on older patients who would otherwise experience long waits due to the complexity of their conditions;
- achieving benchmark performance standards for waiting times for access to elective surgery; and
- achieving bed occupancy rates of less than 90%. Occupancy levels of 90% or less contribute to patient safety, reduce access block, ensure efficient work flows and minimise disruptions to elective surgery.

	Total Cost		Government Payment for Outputs	
	2004-05	2005-06	2004-05	2005-06
	Est. Outcome \$'000	Budget \$'000	Est. Outcome \$'000	Budget \$'000
Output 1.2 Mental Health Services	43 829	47 578	42 146	45 709

Output Description

Mental Health ACT provides a range of services in hospitals, community health centres and people's homes across the Territory. Mental Health ACT works with its community partners to provide integrated and responsive mental health services including hospital-based specialist services, supported accommodation services and community based service responses.

The key strategic priorities for mental health services are ensuring that clients' needs are met in a timely fashion and that care is integrated across hospital, community and residential support services. This means focussing on:

- ensuring timely access to emergency mental health care through reducing excessive waiting times for urgent admissions to acute psychiatric units; and

Output Classes cont.

- ensuring that Mental Health ACT provides consumers with appropriate assessment, treatment and care that results in improved mental health outcomes.

	Total Cost		Government Payment for Outputs	
	2004-05	2005-06	2004-05	2005-06
	Est. Outcome \$'000	Budget \$'000	Est. Outcome \$'000	Budget \$'000
Output 1.3 Community Health Services	89 391	98 647	81 479	90 594

Output Description

Community Health provides a range of community based health service responses across the ACT that meet the needs of many people with chronic conditions and primary health care needs as well as providing valuable pre and post hospital care responses.

The key strategic priorities for community health include early intervention, improved access to community health care and better integration between acute, primary and community based care. This includes:

- ensuring immediate access to public dental health care in cases of emergency need;
- providing health care assessments for people detained in corrective facilities on detention; and
- working with the acute care sector to ensure effective provision of allied health care to people in hospitals in order to maximise health outcomes.

	Total Cost		Government Payment for Outputs	
	2004-05	2005-06	2004-05	2005-06
	Est. Outcome \$'000	Budget \$'000	Est. Outcome \$'000	Budget \$'000
Output 1.4 Public Health Services	23 339	21 007	21 117	19 724

Output Description

Public Health Services provide Government services and purchases services from Non-Government agencies. It provides high quality health and community services to the ACT and surrounding region including the supply of blood and blood products.

The key strategic priorities for public health services include the monitoring of prevention, early intervention and integrated care services to ensure that the ACT maintains its position as the healthiest jurisdiction in Australia. These priorities include:

- maintaining the ACT's position as the jurisdiction with the greatest life expectancy in Australia;
- reducing the incidence of cardiovascular disease in the community; and
- ensuring that the rate of hip fractures declines over the long-term.

Output Classes cont.

	Total Cost		Government Payment for Outputs	
	2004-05	2005-06	2004-05	2005-06
	Est. Outcome \$'000	Budget \$'000	Est. Outcome \$'000	Budget \$'000
Output 1.5 Cancer Services	15 821	18 517	11 847	14 275

Output Description

Capital Region Cancer Services provide a comprehensive range of screening, assessment, diagnostic, treatment and palliative care services. Services are provided in inpatient, outpatient and community settings.

The key strategic priorities for cancer care services are early detection, and timely access to diagnostic and treatment services. This includes:

- ensuring that population screening rates for breast and cervical cancer meet targets; and
- waiting time for access to essential services such as radiotherapy are consistent with agreed benchmarks.

	Total Cost		Government Payment for Outputs	
	2004-05	2005-06	2004-05	2005-06
	Est. Outcome \$'000	Budget \$'000	Est. Outcome \$'000	Budget \$'000
Output 1.6 Aged Care and Rehabilitation Services	17 772	21 728	14 829	18 305

Output Description

The provision of an integrated, effective and timely response to aged care and rehabilitation services for inpatient, outpatient, emergency department, sub-acute and community based settings.

The key strategic priorities for Aged Care for Rehabilitation Services (ACRS) are:

- reducing excessive waiting times for admission to a hospital bed through emergency departments;
- ensuring that older persons in hospital wait the least possible time for access to comprehensive assessment by the Aged Care Assessment Team (ACAT). This will assist in facilitating their safe return home with appropriate support, or access to, appropriate supported residential accommodation; and
- improving discharge planning to minimise the likelihood of readmission, or inadequate support for independent living, following completion of hospital care.

Output Classes cont.

	Total Cost		Government Payment for Outputs	
	2004-05 Est. Outcome \$'000	2005-06 Budget \$'000	2004-05 Est. Outcome \$'000	2005-06 Budget \$'000
Output 1.7 Early Intervention and Prevention	15 140	16 692	15 042	16 322

Output Description

Increasing the focus on initiatives that prevent or intervene early in health care conditions that result in major acute or chronic health burdens on the community.

The key strategic priorities for intervention and prevention are:

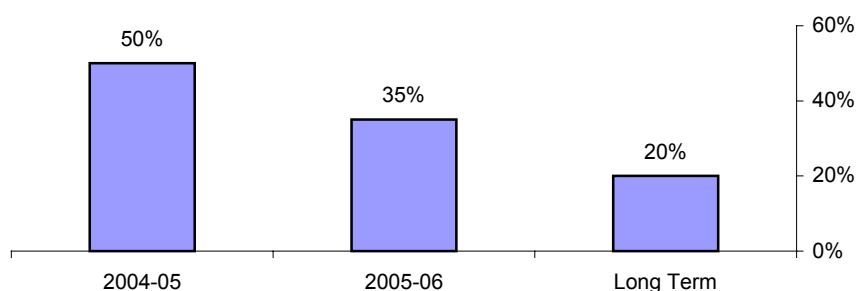
- reducing the level of youth smoking in the ACT;
- maintaining immunisation rates for children above 90%;
- ensuring that the newborn hearing screening program reaches 100% of babies born in the ACT;
- increasing the proportion of females screened through the BreastScreen Australia program for the target population (aged 50-69 years) to 70%; and
- reporting the number of females aged 20-69 years screened for cervical abnormalities.

Strategic Indicators

Strategic Indicator 1 Emergency Department access block

Acute Services

Proportion of persons who are admitted via the emergency department who wait more than 8 hours from commencement of treatment to admission in a ward.



This provides an indication of the effectiveness of public hospitals in meeting the need for acute care and emergency department care.

Strategic Indicator 2 Maximising the quality of hospital services

The Australian Council on Health Care Standards has defined four key indicators of the quality of hospital services. These are:

1. Rate of unplanned return to the operating theatre

	2004-05 Targets	2004-05 Est. Outcome	2005-06 Target
The Canberra Hospital	-	0.84%	0.7%
Calvary Public Hospital	-	0.34%	0.3%

The proportion of people who have an operation who require an unplanned return to the operating theatre within a single episode of care due to complications with their care. This provides an indication of the quality of theatre and post-operative care.

2. Rate of unplanned hospital readmission

	2004-05 Targets	2004-05 Est. Outcome	2005-06 Target
The Canberra Hospital	-	2.64%	2.5%
Calvary Public Hospital	-	1.13%	1.1%

The proportion of people separated from hospital who are re-admitted to hospital within 28 days of their separation due to complications with their care (where the re-admission was unforeseen at the time of separation). This provides an indication of the effectiveness of hospital-based services in the ACT in the treatment and discharge of persons who receive hospital based care.

Strategic Indicators cont.

3. Rate of post-operative pulmonary embolism

	2004-05 Targets	2004-05 Est. Outcome	2005-06 Target
The Canberra Hospital	-	1.01%	<1%
Calvary Public Hospital	-	0.95%	<1%

The proportion of people admitted to hospital who experience a pulmonary embolism. This provides an indication of the quality of care and the effectiveness of the hospital system in meeting the needs of patients.

4. Hospital acquired infection rate (bacteraemia)

	2004-05 Targets	2004-05 Est. Outcome	2005-06 Target
The Canberra Hospital	-	0.72%	0.7%
Calvary Public Hospital	-	0.1%	0.1%

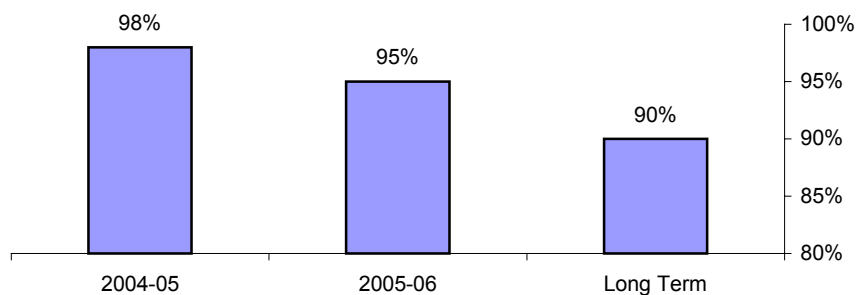
The proportion of people admitted to hospitals that acquire an infection during their stay. This provides an indication of the safety of hospital-based services.

Strategic Indicator 3

Reaching the optimum occupancy rate for acute overnight hospital beds

Bed occupancy

Mean percentage of overnight acute hospital beds in use.



This provides an indication of the efficient use of resources available for hospital services.

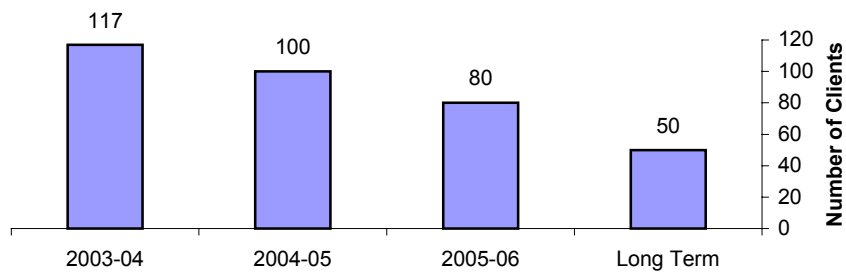
Strategic Indicators cont.

Strategic Indicator 4 Reducing the usage of seclusion

The number of occasions of seclusion. This measures the effectiveness of care provided by Mental Health ACT over time in providing services that minimise the need for seclusion.

Use of Seclusion

The number of clients of Mental Health ACT who are subject to seclusion.

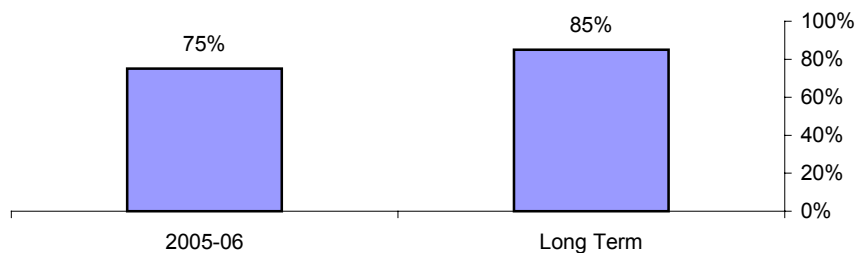


Strategic Indicator 5 Increasing consumer and carer participation

The proportion of Mental Health ACT clients with individual care plans incorporating consumer and/or carer comment and signed agreement.

Consumer participation in health care plans

The proportion of Mental Health ACT clients involved in the development of their health care plans.



Strategic Indicators cont.

Strategic Indicator 6

Access to Acute Care

The proportion of mental health clients admitted to hospital from the emergency department who wait more than 8 hours from the time of commencement of treatment to the time of transfer to a ward.

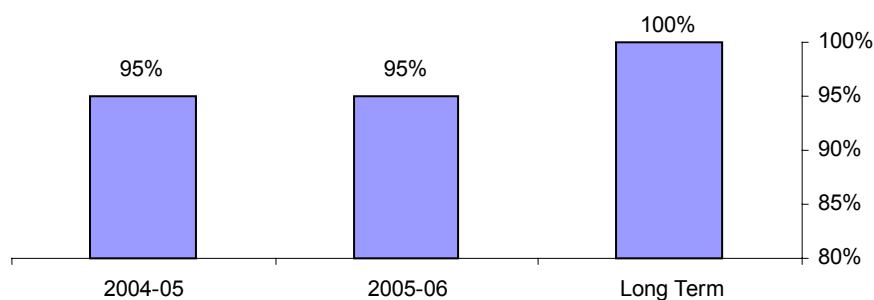
The long-term aim is to reduce the proportion of mental health clients waiting more than 8 hours for admission to a maximum of 25%.

Strategic Indicator 7

No waiting for access to emergency Dental Health services

Oral Health

Percentage of assessed emergency clients seen within 24 hours.



The proportion of clients assessed with emergency dental health needs who are seen within 24 hours. This provides an indication of the responsiveness of the dental service to emergency need.

Strategic Indicator 8

Achieve lower than the Australian average in the decayed, missing or filled teeth (DMFT) index

Age	ACT	Australia
DMFT index at 5/6 years	1.83	1.56
DMFT Index at 12 years	1.39	0.84

The mean number of teeth with dental decay, missing or filled teeth at ages 6 and 12. This gives an indication of the effectiveness of prevention, early intervention and treatment services in the ACT. The aim for the ACT is to better the Australian average by 2006.

Strategic Indicators cont.

Strategic Indicator 9

Maintenance of the highest life expectancy at birth in Australia

Life expectancy at birth	ACT	Australia	Next Best State (WA)
Females	83.3	82.6	82.9
Males	79.2	77.4	77.9

Source: Australia's Health 2004 (Life expectancy 2000-02)

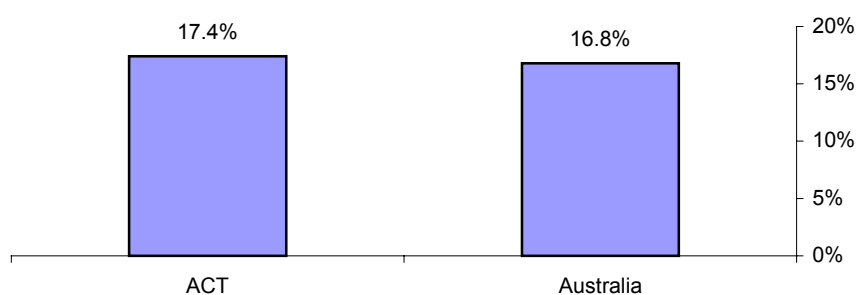
Life expectancy at birth provides an indication of the general health of the population and reflects on a range of issues other than the provision of health services, such as economic and environmental factors. The ACT has the highest life expectancy of any jurisdiction in Australia. The Government aims to maintain this result.

Strategic Indicator 10

Reduction in the prevalence of cardiovascular disease in the ACT

Cardiovascular disease

Prevalence of cardiovascular disease - ACT and Australia.



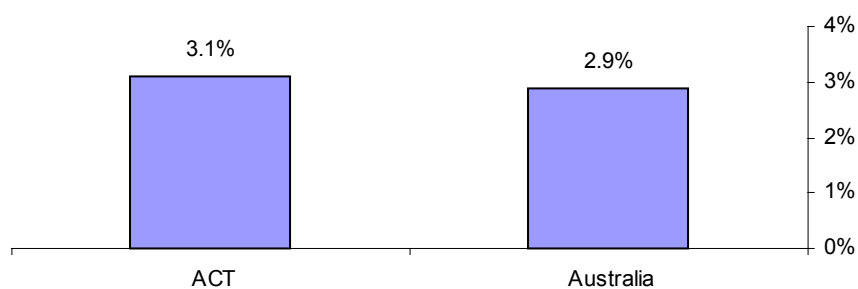
The proportion of the ACT population diagnosed with some form of cardiovascular disease. This provides an indication of the success of prevention and early intervention initiatives as well as providing an indication of the demand for acute cardiovascular services. The Government aims to better the Australian average by 2007.

Strategic Indicators cont.

Strategic Indicator 11 Prevalence of diabetes in the ACT

Diabetes

Prevalence of diabetes - ACT and Australia.



The proportion of the ACT population diagnosed with some form of diabetes. This provides an indication of the success of prevention and early intervention initiatives. Prevalence rates may increase in the short term as a result of early intervention and detection campaigns. This would be a positive result as experts predict that only half of those with diabetes are aware of their condition. This can have significant impacts on their long-term health.

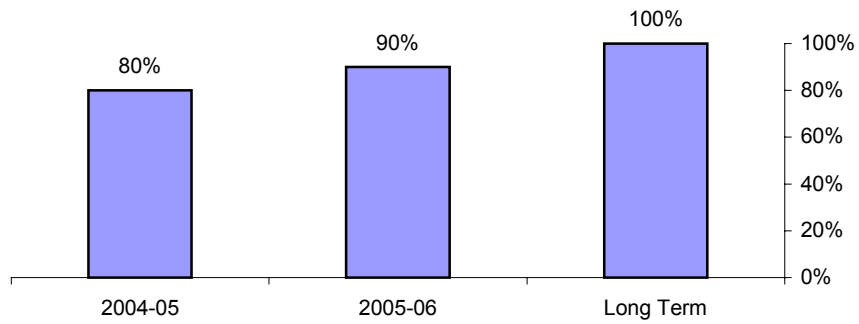
Strategic Indicator 12 Reduction in the rate of fractured neck or femur (broken hip)

The reduction or maintenance of the rate of fractured neck or femurs for ACT residents aged over 75 years. This provides an indication of the success of public and community health initiatives to prevent hip fractures. At present the rate for ACT residents is 6.8 fractures per 1,000 ACT residents aged over 75 years. The ageing of the population will significantly increase the number of people in this age group.

Strategic Indicator 13 Access to radiotherapy services

Radiotherapy access times

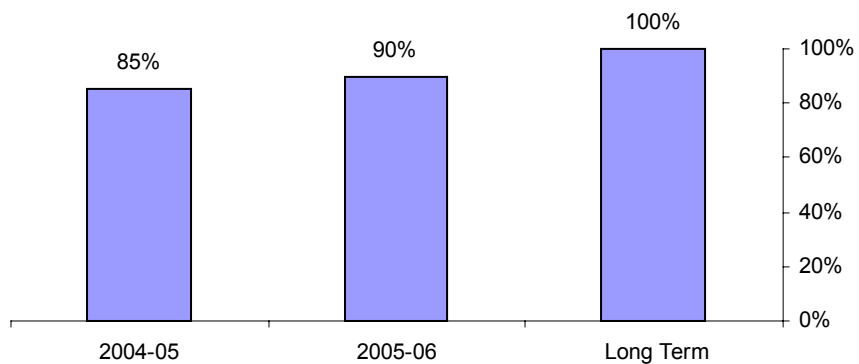
Percentage of urgent radiotherapy patients who receive care within 48 hours.



Strategic Indicators cont.

Radiotherapy access times

Percentage of semi urgent radiotherapy patients who receive care within 4 weeks.



This provides an indication of the effectiveness of radiotherapy services in meeting the need for urgent services for the people of the ACT.

Strategic Indicator 14

Decrease in death rates for breast and colon cancers

Type of Cancer	ACT Females	ACT Males	Australian Females	Australian Males
Breast Cancers	29.9	N/A	24.8	N/A
Colorectal Cancers	21.7	28.1	19.7	30.5

1. Cancer in Australia 2001 (AIHW 2004), Age standardised death rate per 100,000 population

This indicator measures the death rate for breast and colon cancer in the ACT against the rest of Australia. The Government aims to meet or better the Australian rate. This provides an indication of the effectiveness of prevention, early intervention and treatment initiatives.

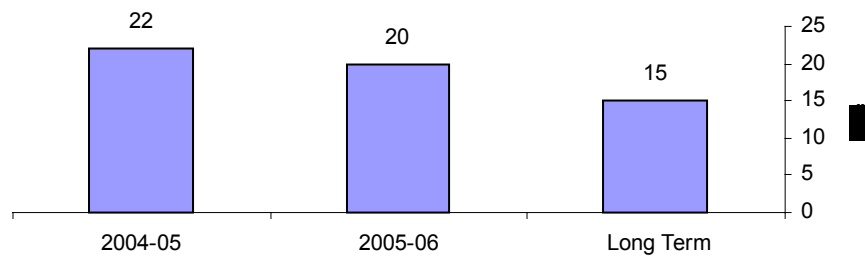
Strategic Indicators cont.

Strategic Indicator 15

Reducing the average length of stay for acute rehabilitation care

Acute Rehabilitation

Average length of stay for acute rehabilitation patients.



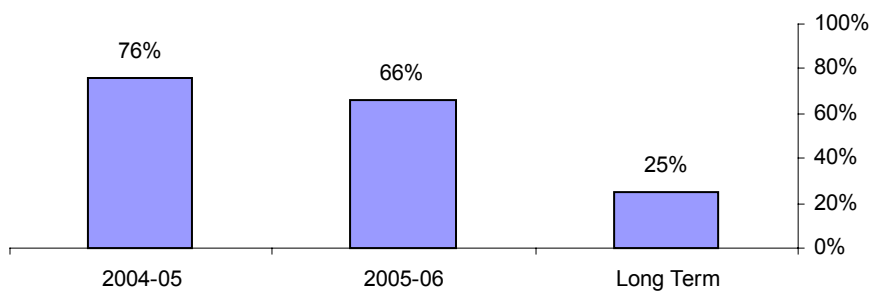
This provides an indication of the capacity and effectiveness of sub-acute and community based services.

Strategic Indicator 16

Improving hospital access times for older persons

Access to aged care inpatient services

Percentage of admissions via Emergency Department (ED) by persons 75 years or more who wait more than 8 hours from commencement of treatment in ED to admission to ward.



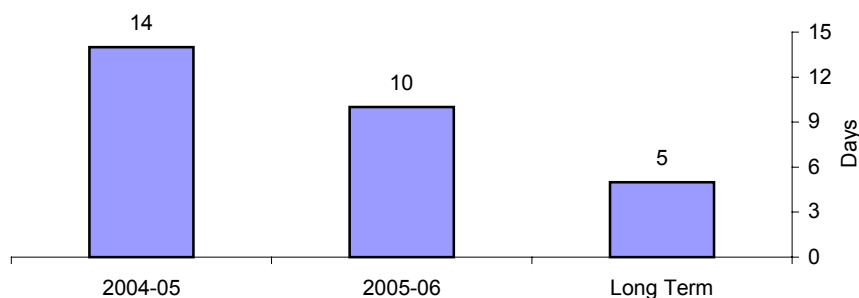
Strategic Indicators cont.

Strategic Indicator 17

Reducing the waiting times for assessments by the Aged Care Assessment Team

Aged care assessment team

This is measured by the mean waiting time in days between request for, and provision of, assessment by the Aged Care Assessment Team (ACAT).



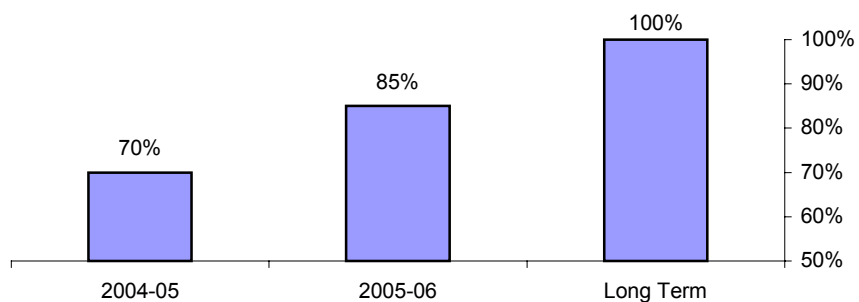
This provides an indication of the responsiveness of the ACAT team in assessing the needs of clients.

Strategic Indicator 18

Increasing the rate of discharge planning

Discharge planning

Proportion of aged care clients discharged with a comprehensive discharge plan.



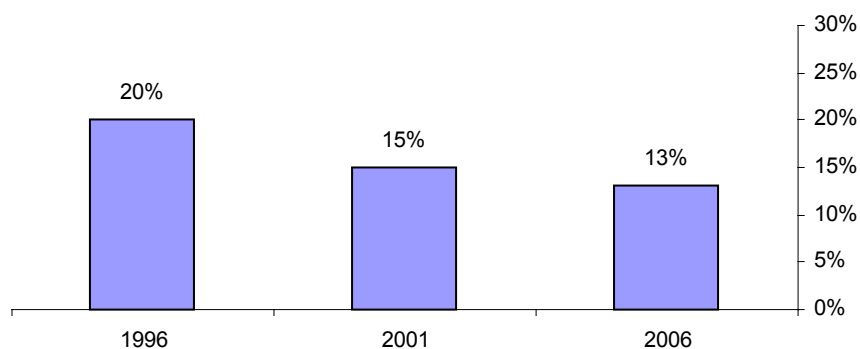
This provides an indication of the effectiveness of services in planning and organising for the needs of clients following their hospital episode and the level of integration of hospital and community based care.

Strategic Indicators cont.

Strategic Indicator 19 Reduction in the youth smoking rate

Youth Smoking

Percentage of persons aged 12-17 years who smoke regularly.



The ACT rate has dropped significantly since 1996 from 20%. The Government aims to maintain this drop in youth smoking with an objective to reach 13% by 2006. This indicator provides evidence of the success of prevention and early intervention campaigns. The national rate in 2001 (latest available data) was 14%.

Strategic Indicator 20 Newborn hearing screening for every baby born in the ACT

The Government has provided funding to expand the Newborn Hearing Screening Program to cover all babies born in the ACT. The Newborn Hearing Screening Program will extend beyond the public system to include babies born in ACT private hospitals.

This ensures that any anomaly in hearing test results can be attended to within weeks of birth, thus making treatment more effective in the short and long term.

Strategic Indicator 21 Number of additions to the cervical screening register

Increase in the number of additions to the cervical register annually (up to 32,000 in 2005-06 from the target of 30,000 in 2004-05). This level of reporting of cervical screens provides an indication of the effectiveness of early intervention health messages.

Accountability Indicators

	2004-05 Targets	2004-05 Est. Outcome	2005-06 Targets
Output Class 1			
Health and Community Care			
Output 1.1 Acute Services			

Patient activity

a. Cost weighted patient separations	59 330 ¹	59 330 ¹	61 285
b. Non-admitted occasions of service	202 020	210 320 ²	219 310
c. Percentage of category one elective surgery patients who receive surgery within 30 days of listing	95%	92%	100%

This provides an indication of the responsiveness of the hospital system to those in urgent need of elective surgery.

^{1.} The 2004-05 target and estimated outcomes have been adjusted to reflect the removal of cost weighted separations for Capital Region Cancer Stream and the Aged and Rehabilitation Care Stream.

^{2.} The increase in activity in 2004-05 is principally due to increases in imaging services and in part by the transfer of endoscopy services to outpatient care settings within acute care services (+1,000).

Output 1.2 Mental Health Services

Patient activity

a. Admitted patient separations	1 400	1 420	1 300
b. Adult services	138 800	136 539	140 800
c. Children and youth services	24 000	28 660	24 300
d. Older persons' services	12 200	12 071	12 400

The number of people who use the various community based service responses. This provides an indication of the volume of care provided by Mental Health ACT.

e. Supported accommodation bed occupancy rate	95%	95%	95%
---	-----	-----	-----

The proportion of occupied supported accommodation bed days compared to the total available bed days. This provides an indication of the efficient use of resources available for supported accommodation services.

f. The proportion of clients seen at an ACT Health community facility during the 7 days post discharge from the inpatient services.	-	-	75%
---	---	---	-----

This provides an indication of the effectiveness of Mental Health ACT in providing an integrated response to the needs of its clients.

g. Percentage of clients with outcome measures completed	-	-	75%
--	---	---	-----

This provides a data platform for analysis of the appropriateness and effectiveness of mental health services in ensuring that client needs are met.

Accountability Indicators cont.

	2004-05 Targets	2004-05 Est. Outcome	2005-06 Targets
Output Class 1			
Health and Community Care			
Output 1.3 Community Health Services			
a. Number of opioid treatment clients with management plans	-	-	450
This provides an indication of the comprehensiveness of the service responses for people on opioid treatments.			
b. Mean waiting time for clients on the dental services waiting list	12 months	8 months	8 months
This provides an indication of the capacity of the adult dental program in meeting the needs of the community. This provides evidence of the responsiveness of Community Health to clients of the dental program.			
c. Proportion of offenders and detainees in Quamby and the Belconnen Remand Centre with health care assessment plans within 24 hours of detention	-	-	100%
This provides an indication of the effectiveness of Community Health in providing for the health needs of detainees and offenders.			
d. Number of allied health care services provided for acute care patients in ACT public hospitals	85 000	85 000	85 000
This provides an indication of the level of allied health services provided to hospital based patients by Community Health.			
e. Proportion of new referrals to Community Health aged over 65 years with a completed falls assessment	-	-	60%
This provides an indication of the responsiveness of Community Health to the needs of its client group.			
Output 1.4 Public Health Services			
a. Samples analysed	7 000	7 000	7 000
The amount of specimens provided to the Health Protection Service Analytical Laboratory for analyses in connection with legislation enforcement, other services to ACT Government agencies and private activity.			
b. Inspection compliance of licensable, registrable and non-licensable activities	70%	70%	70%
c. Response time to environmental health hazards, communicable disease hazards relating to measles and meningococcal infections and food poisoning outbreaks is less than 24 hours.	100%	100%	100%

Accountability Indicators cont.

	2004-05 Targets	2004-05 Est. Outcome	2005-06 Targets
Output Class 1			
Health and Community Care			
Output 1.5 Cancer Services			

Patient activity

a. Cost weighted admitted patient separations	2 973	3 050	3 140
b. Non admitted occasions of service	32 000	33 500	34 400

The number of hospital based services provided to clients. This provides an indication of the volume of care provided for hospital based cancer patients.

Breast screening

c. Waiting time for results is less than 28 days	-	-	100%
d. Waiting time between breast screen and assessment is less than 28 days	-	-	90%

This gives an indication of total volume of services as well as providing an indication of the level of services provided to women in the target age group.

This provides an indication of the effectiveness of the service in providing timely advice to women on the results of their breast screen.

Output 1.6 Aged Care and Rehabilitation Services

Patient activity

a. Cost weighted admitted patient separations	3 153	3 200	3 350
b. Non admitted occasions of service	980	1 180	1 290

This provides an indication of the level of services provided.

c. Number of people assessed in falls clinics	240	420	420
---	-----	-----	-----

This provides an indication of the demand for this service and the effectiveness of aged care services in minimising the fall risks for older people.

Output 1.7 Early intervention and Prevention

a. Immunisation coverage for the primary immunisation schedule measured at 1 year of age, in accordance with the Australian Childhood Immunisation Register	91%	91%	91%
---	-----	-----	-----

The proportion of coverage for the primary immunisation schedule, measured at 1 year of age, in accordance with the Australian Childhood Immunisation Register.

Breast Screening

b. Total screens	12 000	11 200	12 000
c. Number of screens for women aged over 50	-	-	9 950

The total number of women who have breast screens each year and the number of women in the major target group (aged 50 to 69 years) who access this service. This gives an indication of total volume of services as well as providing an indication of the level of services provided to women in the target age group.

Budgeted Financial Results

Section 31 of the *Financial Management Act 1996* (FMA) advises that Chief Executives are responsible for achievement of financial results. For the purpose of Section 31 of the FMA, key budgeted results are specified in the Budget Papers to improve accountability. An outcome of the increased accountability will be the requirement for Chief Executives to explain material variances from specified budgeted results.

In accordance with Section 31 of the FMA, the following are the key budgeted results for ACT Health:

- **Operating Result (\$14.333m deficit)** – this measure focuses on the financial performance of ACT Health, and will measure management of expenditure levels within Government funding and own-source revenue limitations. The budgeted level of deficit mainly reflects depreciation and accrued employee expenses offset by recurrent funding for capital purchases.
- **Current Ratio¹ (0.48 to 1)** – the current ratio is an indication of the ability to fund short-term liabilities from short-term assets. While a generally accepted minimum of 1:1 is desired, given the nature of the Department's operations and that the majority of its revenue is from Government and received in regular fortnightly instalments, a ratio of 0.48 to 1 is not unreasonable. Additionally, the Department's current liabilities of \$69.757m include \$38.522m for annual leave. While some leave entitlements are likely to be utilised within the next financial year, the overall level of provisions are expected to remain constant or grow due to the accumulation of new leave by employees.
- **Total Assets (\$433.480m)** – this measure focuses on ACT Health's ability to manage its asset base.
- **Total Liabilities (\$102.360m)** – this measure focuses on maintaining prudent levels of liabilities as required by Section 11 of the FMA.

¹ *Total current assets / Total current liabilities*

Changes to Appropriation

Changes to Appropriation - Departmental

	2004-05	2005-06	2006-07	2007-08	2008-09
Government Payment for Outputs	Est. Outc.	Budget	Estimate	Estimate	Estimate
	\$'000	\$'000	\$'000	\$'000	\$'000
2004-05 Budget	489 505	519 757	548 660	572 567	572 567
2nd Appropriation					
Wage Negotiations	8 506	10 010	13 654	13 986	14 171
Aboriginal and Torres Strait Islander Dental Health Program	56	222	228	233	239
Children at Risk Assessment Unit	206	638	659	669	678
2005-06 Budget Policy Adjustments					
Elective Surgery	0	2 000	2 050	2 101	2 154
Equipment for Hospitals	0	2 000	0	0	0
Dental Services	0	278	285	292	299
Reform of Community Sector Funding Indexation	0	0	224	463	716
Continuation of Growth Initiative	0	0	0	0	12 895
General Savings	0	-2 500	-2 500	-2 500	-2 500
Agency Funded Initiatives					
After Hour GP Service	0	350	359	369	377
Allied Health Assistants	0	250	257	263	270
Care Package - Returning Mental Health Clients	0	613	623	634	0
Clinical IT Package	0	800	1 071	987	635
Falls Prevention	0	300	300	300	300
High needs Children	0	465	630	650	670
Intermittent Care Program	0	650	660	670	680
Nurse Practitioners	0	250	256	263	269
Nurse Re-entry/Refresher	0	500	512	525	538
Pathology Registrar	0	100	100	100	100
Picture Archival Communication System (PACS)	0	170	1 310	1 686	1 702
Quality Infrastructure	0	500	916	933	950
General Savings to be Reinvested	0	-7 278	-8 412	-7 380	-6 491
2005-06 Budget Technical Adjustments					
Revised Indexation Parameters	0	0	0	0	10 906
Employer Superannuation Adjustment	0	650	650	650	650
Cross Border Outpatients	0	-2 000	-2 000	-2 000	-2 000
Revised Commonwealth Specific Purpose Payments	556	939	320	-1 647	-1 297
Transfer of Community and Health Services Complaints Commissioner Unit to DJCS	0	-1 100	-1 131	-1 149	-1 168
Transfer of Respite Funding (Baptist Community Service) to DDHCS	0	-205	-210	-215	-220
Transfer of Healthcall Agreement from DDHCS	0	680	697	714	732
Communication Contract Savings	0	-147	-218	-218	-218
2005-06 Capital Works Program - Feasibility Studies	0	1 180	0	0	0
2005-06 Budget	498 829	530 072	559 950	583 946	608 604

Changes to Appropriation - Territorial

	2004-05	2005-06	2006-07	2007-08	2008-09
Payment for Expenses on Behalf of Territory	Est. Outc.	Budget	Estimate	Estimate	Estimate
	\$'000	\$'000	\$'000	\$'000	\$'000
2004-05 Budget	15 881	8 916	2 772	2 836	2 836
2005-06 Budget Policy Adjustments					
2005-06 Capital Works Program - Calvary	0	2 200	575	0	0
Capital Upgrade Program - Calvary	0	1 240	640	640	640
2005-06 Budget Technical Adjustments					
Revised Indexation Parameters	0	0	0	0	71
Rollover - Capital Works - Calvary	-8 455	6 275	2 180	0	0
2005-06 Budget	7 426	18 631	6 167	3 476	3 547

Changes to Appropriation - Departmental

	2004-05	2005-06	2006-07	2007-08	2008-09
Capital Injections	Est. Outc.	Budget	Estimate	Estimate	Estimate
	\$'000	\$'000	\$'000	\$'000	\$'000
2004-05 Budget	29 061	6 100	0	0	0
2005-06 Budget Policy Adjustments					
2005-06 Capital Works Program	0	3 400	3 980	0	0
Capital Upgrade Program	0	2 610	3 210	3 210	3 210
Agency Funded Initiatives					
Picture Archival Communication System (PACS)	0	2 330	1 418	0	0
2005-06 Budget Technical Adjustments					
Rollover - Capital Works	-7 224	7 224			
Return of Discontinuing Projects	-5 719	-1 700	0	0	0
Transfer of 'Junction' Youth Health to Office for Children, Youth and Family Support	-780	0	0	0	0
2005-06 Budget	15 338	19 964	8 608	3 210	3 210

Capital Works

Departmental

	Estimated Total Cost \$'000	Prior Year Expenditure \$'000	2005-06 Financing \$'000	2006-07 Financing \$'000	2007-08 Financing \$'000	Expected Completion Date
New Capital Works						
New Construction Works						
<i>Departmental</i>						
Refurbish Roof of Old Analytical Lab Building – Holder	1 000	-	1 000	-	-	Mar 2006
Karralika Development Options	400	-	400	-	-	Nov 2005
<i>Mental and Community Health</i>						
Master Planning of Mental and Community Health Facilities	300	-	300	-	-	Oct 2005
<i>The Canberra Hospital</i>						
Medical Records Relocation	3 380	-	1 000	2 380	-	Jun 2007
Fire Systems Upgrade (Phase 1)	2 600	-	1 000	1 600	-	Jun 2007
Building 1 Tower/Ambulatory Care/Hot floor	500	-	500	-	-	Oct 2005
Helipad Relocation/Multi-Storey Carpark	310	-	310	-	-	Oct 2005
Traffic and Parking Review	70	-	70	-	-	Oct 2005
Total New Construction Works	8 560	-	4 580	3 980	-	
Capital Upgrades						
Building Refurbishment and Upgrades	1 210	-	1 210	-	-	
Electrical, Lift and Major Plant Upgrades	580	-	580	-	-	
Environment and Safety	500	-	500	-	-	
OH&S and Access	320	-	320	-	-	
Total Capital Upgrades	2 610	-	2 610	-	-	
Total New Capital Works	11 170	-	7 190	3 980	-	
Works in Progress						
Refurbish Paediatrics	4 050	3 593	457	-	-	Aug 2005
ANU (Canberra) Medical School - Canberra Hospital	12 100	2 700	9 400	-	-	Jan 2006
Howard Florey Building, Holder– Supplementary Funding	417	-	417	-	-	Jan 2006
Building 10 Lifts and Dumb Waiter Upgrade	650	280	370	-	-	Oct 2005
Orthopaedic Theatre Refurbishment	470	80	390	-	-	Jan 2006
Anatomical Pathology Laboratory Refurbishment	450	150	300	-	-	Aug 2005
Imaging Department Reception and Work Area	375	85	290	-	-	Aug 2005
Total Works in Progress	18 512	6 888	11 624	-	-	
Total Departmental Capital Works	29 682	6 888	18 814	3 980	-	

Territorial

	Estimated Total Cost Expenditure \$'000	Prior Year Expenditure \$'000	2005-06 Financing \$'000	2006-07 Financing \$'000	2007-08 Financing \$'000	Expected Completion Date
New Capital Works						
New Construction Works						
<i>Calvary Hospital</i>						
Fire Safety Upgrade	1 000	-	1 000	-	-	Jun 2006
Calvary Hospital Sterilising Facility	1 775	-	1 200	575	-	Dec 2006
Total New Construction Works	2 775	-	2 200	575	-	
Capital Upgrades						
Building Refurbishment and Upgrades	940	-	940	-	-	
Electrical, Lift and Major Plant Upgrades	300	-	300	-	-	
Environment and Safety	-	-	-	-	-	
OH&S and Access	-	-	-	-	-	
Total Capital Upgrades	1 240	-	1 240	-	-	
Total New Capital Works	4 015	-	3 440	575	-	
Works in Progress						
Sub and Non Acute Service – Phase 1	5 150	830	4 320	-	-	Oct 2006
Sub/Non Acute Services Supplementary Funding	4 600	-	2 420	2 180	-	Oct 2006
Canberra Medical School	1 750	250	1 500	-	-	Feb 2006
Improvements to Security and Access Control	460	410	50	-	-	Aug 2005
Plant and Building Upgrade	4 192	500	3 692	-	-	Jun 2006
Electrical and Lift Upgrade	2 678	2 178	500	-	-	Sep 2005
Total Works in Progress	18 830	4 168	12 482	2 180	-	
Total Territorial Capital Works	22 845	4 168	15 922	2 755	-	

Commonwealth Grants

The major Commonwealth payments for which the Portfolio has responsibility are:

Name of Grant	Activities Funded by Grant	2005-06 Estimate \$'000
Australian Health Care Agreement	This relates to public patients treated in the ACT. It also includes national mental health, palliative care and quality improvement.	107 479
Home and Community Care	Expansion and development of home and community care services designed to provide basic maintenance and support services for identified target groups.	10 215
National Public Health Outcomes Agreement	Provide a range of public health services including: breast cancer screening; family planning; funds to combat AIDS; drug education campaigns; women's health program; female genital mutilation; alternative birthing; and cervical cancer screening.	3 397
Australian Immunisation Agreement	Provision of funding for vaccines listed under the National Immunisation Program, including vaccines for the childhood immunisation program, influenza and pneumococcal vaccines for people aged 65 years and over.	1 435
Illicit Drug Diversion	This grant program provides early intervention in the criminal justice process and opportunities for individuals to access assessment, with a view to treatment, rather than progress through the criminal justice system. In addition, funding is provided to support needle and syringe programs.	1 260
High Cost Drugs	Provision of highly specialised drug therapies under section 100 of the <i>National Health Act 1953</i> .	6 500
Pathways Home Program	Provide rehabilitation/transitional and psycho geriatric services to support persons who have completed an acute hospital episode but require an intensive period of recuperation and rehabilitation in order to successfully return to community living.	2 600
Aged Care Assessment Team	Commonwealth funds are provided to support 'assessment' services for aged people.	492
Youth Health Services (IHSY)	Funding of a range of innovative health services for homeless youth in the ACT.	57
Total		133 435

ACT Health Operating Statement

2004-05 Budget \$'000		2004-05 Est.Outcome \$'000	2005-06 Budget \$'000	Var %	2006-07 Estimate \$'000	2007-08 Estimate \$'000	2008-09 Estimate \$'000
Income							
Revenue							
492 057	Government Payment for Outputs	503 551	533 205	6	559 950	583 946	608 604
90 109	User Charges - Non ACT Government	100 341	107 219	7	110 960	112 066	113 387
3 097	User Charges - ACT Government	2 597	2 508	-3	2 570	2 634	2 666
5 676	Grants from the Commonwealth	6 876	6 500	-5	6 670	6 844	6 969
1 147	Interest	1 447	1 236	-15	1 186	1 186	1 186
5 038	Other Revenue	5 238	5 608	7	5 747	5 889	5 978
303	Resources Received free of charge	681	664	-2	682	700	723
597 427	Total Revenue	620 731	656 940	6	687 765	713 265	739 513
Gains							
0	Total Gains	0	0	-	0	0	0
597 427	Total Income	620 731	656 940	6	687 765	713 265	739 513
Expenses							
266 475	Employee Expenses	281 776	298 100	6	311 836	322 255	332 049
34 153	Superannuation Expenses	35 049	37 606	7	38 872	39 387	39 843
169 975	Supplies and Services	172 441	179 356	4	185 646	193 708	202 362
14 244	Depreciation and Amortisation	13 500	14 963	11	15 966	16 250	15 987
5 836	Cost of Goods Sold	7 500	8 032	7	8 182	8 335	8 535
120 003	Grants and Purchased Services	123 287	130 834	6	139 246	146 368	153 239
2 261	Other Expenses	2 171	2 382	10	2 440	2 499	2 599
612 947	Total Ordinary Expenses	635 724	671 273	6	702 188	728 802	754 614
-15 520	Operating Result From Ordinary Activities	-14 993	-14 333	4	-14 423	-15 537	-15 101
0	Extraordinary Revenue	-142	0	-100	0	0	0
102	Extraordinary Expense	350	0	-100	0	0	0
-15 622	Operating Result	-15 485	-14 333	7	-14 423	-15 537	-15 101

ACT Health Balance Sheet

Budget as at 30/6/05 \$'000		Est.Outcome as at 30/6/05 \$'000	Planned as at 30/6/06 \$'000	Var %	Planned as at 30/6/07 \$'000	Planned as at 30/6/08 \$'000	Planned as at 30/6/09 \$'000
Current Assets							
1 445	Cash	3 943	4 026	2	3 600	3 174	2 748
14 731	Receivables	20 593	20 593	-	20 593	20 593	20 593
4 963	Investments	19 823	1 567	-92	1 193	819	445
4 827	Inventories	6 006	6 006	-	6 006	6 006	6 006
1 658	Other	1 289	1 289	-	1 289	1 289	1 289
27 624	Total Current Assets	51 654	33 481	-35	32 681	31 881	31 081
Non Current Assets							
3 000	Investments	3 000	3 000	-	3 000	3 000	3 000
395 939	Property, Plant and Equipment	360 758	385 202	7	387 349	381 932	375 848
954	Intangibles	3 513	9 797	179	7 006	4 215	2 475
3 574	Capital Works in Progress	6 888	2 000	-71	0	0	0
403 467	Total Non Current Assets	374 159	399 999	7	397 355	389 147	381 323
431 091	TOTAL ASSETS	425 813	433 480	2	430 036	421 028	412 404
Current Liabilities							
19 319	Payables	20 286	19 486	-4	18 686	17 886	17 086
1 200	Interest Bearing Liabilities	650	650	-	650	650	650
22	Finance Leases	0	0	-	0	0	0
43 542	Employee Benefits	44 667	48 230	8	49 696	52 251	54 775
2 317	Other	4 524	1 391	-69	1 391	1 391	1 391
66 400	Total Current Liabilities	70 127	69 757	-1	70 423	72 178	73 902
Non Current Liabilities							
999	Payables	852	852	-	852	852	852
66	Finance Leases	39	39	-	39	39	39
30 195	Employee Benefits	29 306	31 712	8	33 417	34 981	36 524
31 260	Total Non Current Liabilities	30 197	32 603	8	34 308	35 872	37 415
97 660	TOTAL LIABILITIES	100 324	102 360	2	104 731	108 050	111 317
333 431	NET ASSETS	325 489	331 120	2	325 305	312 978	301 087
REPRESENTED BY FUNDS EMPLOYED							
332 956	Accumulated Funds	325 014	330 645	2	324 830	312 503	300 612
475	Reserves	475	475	-	475	475	475
333 431	TOTAL FUNDS EMPLOYED	325 489	331 120	2	325 305	312 978	301 087

ACT Health Cash Flow Statement

2004-05 Budget \$'000	2004-05 Est.Outcome \$'000	2005-06 Budget \$'000	Var %	2006-07 Estimate \$'000	2007-08 Estimate \$'000	2008-09 Estimate \$'000
CASH FLOWS FROM OPERATING ACTIVITIES						
Receipts						
489 505	498 829	530 072	6	559 950	583 946	608 604
93 206	102 938	109 727	7	113 530	114 700	116 053
1 147	1 447	1 236	-15	1 186	1 186	1 186
5 676	6 876	6 500	-5	6 670	6 844	6 969
27 161	27 361	27 681	1	27 820	27 962	28 051
616 695	637 451	675 216	6	709 156	734 638	760 863
Payments						
294 865	314 728	329 737	5	347 537	357 523	367 825
171 172	173 260	179 492	4	185 764	193 808	202 439
120 003	124 332	130 834	5	139 246	146 368	153 239
30 220	31 794	32 487	2	32 695	32 907	33 207
102	350	0	-100	0	0	0
616 362	644 464	672 550	4	705 242	730 606	756 710
333	-7 013	2 666	138	3 914	4 032	4 153
NET CASH INFLOW/(OUTFLOW) FROM OPERATING ACTIVITIES						
CASH FLOWS FROM INVESTING ACTIVITIES						
Payments						
44 841	24 105	40 803	69	13 322	8 042	8 163
44 841	24 105	40 803	69	13 322	8 042	8 163
-44 841	-24 105	-40 803	-69	-13 322	-8 042	-8 163
NET CASH INFLOW/(OUTFLOW) FROM INVESTING ACTIVITIES						
CASH FLOWS FROM FINANCING ACTIVITIES						
Receipts						
29 061	15 338	19 964	30	8 608	3 210	3 210
29 061	15 338	19 964	30	8 608	3 210	3 210
Payments						
27	16	0	-100	0	0	0
27	16	0	-100	0	0	0
29 034	15 322	19 964	30	8 608	3 210	3 210
NET CASH INFLOW/(OUTFLOW) FROM FINANCING ACTIVITIES						
-15 474	-15 796	-18 173	-15	-800	-800	-800
NET INCREASE/(DECREASE) IN CASH HELD						
23 682	41 912	26 116	-38	7 943	7 143	6 343
8 208	26 116	7 943	-70	7 143	6 343	5 543

**ACT Health
Statement of Changes in Equity**

Budget as at 30/6/05 \$'000		Est.Outcome as at 30/6/05 \$'000	Planned as at 30/6/06 \$'000	Var %	Planned as at 30/6/07 \$'000	Planned as at 30/6/08 \$'000	Planned as at 30/6/09 \$'000
319 992	Opening Balance	325 636	325 489	..	331 120	325 305	312 978
	Accumulated Funds						
-15 622	Operating Result for the Period	-15 485	-14 333	7	-14 423	-15 537	-15 101
	Reserves						
-15 622	Total Income And Expense For The Period	-15 485	-14 333	7	-14 423	-15 537	-15 101
	Transactions Involving Equity Holders Affecting Accumulated Funds						
29 061	Capital Injections	15 338	19 964	30	8 608	3 210	3 210
333 431	Closing Balance	325 489	331 120	2	325 305	312 978	301 087

Notes to the Budget Statements

Significant variations are as follows:

Operating Statement

- government payment for outputs:
 - the increase of \$11.494m in the 2004-05 estimated outcome from the original budget relates to funding for increases in salaries (\$8.506m), deferred projects (\$2.170m), increased Commonwealth specific purpose payments (\$0.556m) and election commitments funded through the 2nd Appropriation (\$0.262m); and
 - the increase of \$29.654m in the 2005-06 Budget from the 2004-05 estimated outcome relates mainly to funding for increases in salaries (\$11.726m), indexation (\$4.397m), growth funding (\$8.369m), 2005-06 new initiatives (\$4.278m), full year effect of 2004-05 new initiatives (\$4.778m), feasibility studies (\$1.180m), full year effect of 2nd Appropriation election commitments (\$0.598m), increased employer superannuation (\$0.650m), transfer of the Healthcall agreement funding from the Department of Disability, Housing and Community Services (\$0.680m) and higher Commonwealth specific purpose payments (\$0.548m). These are offset by general savings (\$2.5m), a reclassification of government revenue to capital injection for the picture archival communication system (\$2.330m), a reduction to offset expected increases in cross border revenue (\$2m) and the transfer of the health complaints office to the Department of Justice and Community Safety (\$1.1m).
- user charges – non ACT Government:
 - the increase of \$10.232m in the 2004-05 estimated outcome from the original budget relates mainly to higher third party revenue at The Canberra Hospital (\$4.7m), increased cross border revenue from NSW (\$3.868m) and increased supply activity (\$1.664m); and

- the increase of \$6.878m in the 2005-06 Budget from the 2004-05 estimated outcome relates mainly to further increases in cross border revenue from NSW (\$4.034m), indexation (\$1.289m), parking revenue (\$0.805m) and business development and process redesign in pathology (\$0.5m).
- user charges – ACT Government: the decrease of \$0.5m in the 2004-05 estimated outcome from the original budget relates mainly to the cessation of the Healthcall agreement (\$0.680m) with the Department of Disability, Housing and Community Services (these funds will now be directly appropriated to ACT Health);
- grants from the Commonwealth: the increase of \$1.2m in the 2004-05 estimated outcome from the original budget relates to increased pharmaceutical expenses on high cost drugs. The decrease of \$0.376m in the 2005-06 Budget from the 2004-05 estimated outcome represents the estimate of likely reimbursements;
- interest: the increase of \$0.3m in the 2004-05 estimated outcome from the original budget relates to higher levels of investments held due to deferred Commonwealth projects and the timing of payments for the purchase of plant and equipment and information technology systems. The reduction in revenue in the outyears relates to the utilisation of those cash balances;
- other revenue: the increase of \$0.2m in the 2004-05 estimated outcome from the original budget incorporates donations and other miscellaneous revenue collected by the Department;
- resources received free of charge: the increase of \$0.378m in the 2004-05 estimated outcome from the original budget relates to higher levels of legal services received from the Department of Justice and Community Safety (JACS);
- employee expenses:
 - the increase of \$15.301m in the 2004-05 estimated outcome from the original budget relates mainly to pay rises under the new nursing, medical officer and template (clerical) Enterprise Bargaining Agreements (EBA) (\$7.493m), increased activity at The Canberra Hospital funded from higher third party revenue (\$4.4m) and cross border revenue (\$2.468m), deferred projects from 2003-04 (\$0.477m) and 2nd Appropriation funding for election commitments (\$0.163m); and
 - the increase of \$16.324m in the 2005-06 Budget from the 2004-05 estimated outcome relates mainly to funding for EBAs (\$9.031m), growth funding (\$3.2m), new initiatives funded from increased cross border revenue (\$2.8m), full year effect of 2004-05 new initiatives (\$0.478m), 2nd Appropriation funding for election commitments (\$0.336m), 2005-06 new initiatives (\$0.144m) and further increased activity at The Canberra Hospital funded from higher third party revenue (\$1m). These are offset by general savings (\$0.830m) and the transfer of the health complaints office to the Department of Justice and Community Safety (\$0.7m).
- superannuation expenses: the increase of \$0.896m in the 2004-05 estimated outcome from the original budget and the increase of \$2.557m in the 2005-06 Budget from the 2004-05 estimated outcome relates mainly to pay rises under the new nursing, medical officer and template (clerical) (EBA);
- supplies and services:
 - the increase of \$2.466m in the 2004-05 estimated outcome from the original budget relates mainly to projects deferred from 2003-04 (\$0.811m), increased activity at The

Canberra Hospital funded from higher third party revenue (\$0.7m), higher Commonwealth specific purpose payments (\$0.556m) and higher resources received free of charge for legal services (\$0.378m); and

- the increase of \$6.915m in the 2005-06 Budget from the 2004-05 estimated outcome relates mainly to indexation (\$4.3m), growth funding (\$1.2m), feasibility studies (\$1.180m) and new initiatives (\$1m). These are offset by the transfer of the health complaints office to the Department of Justice and Community Safety (\$0.293m) and general savings (\$0.075m).
- depreciation and amortisation:
 - the decrease of \$0.744m in the 2004-05 estimated outcome from the original budget relates mainly to delays in capital works and the purchasing of medical equipment and information technology systems; and
 - the increase of \$1.463m in the 2005-06 Budget from the 2004-05 estimated outcome coincides with the expected take-up of these assets.
- cost of goods sold: the increase of \$1.664m in the 2004-05 estimated outcome from the original budget relates to increased supply activity with external clients such as Calvary Public and Private Hospitals, John James Hospital and Queanbeyan Hospital.
- grants and purchased services:
 - the increase of \$3.284m in the 2004-05 estimated outcome from the original budget relates to EBA payrise funding for Calvary Public Hospital (\$0.860m), deferred projects (\$0.968m), car parking funding for Calvary Public Hospital (\$1.4m) and 2nd Appropriation funding for election commitments (\$0.056m); and
 - the increase of \$7.547m in the 2005-06 Budget from the 2004-05 estimated outcome relates mainly to EBA pay rises (\$2.695m), growth funding (\$3.890m), new initiatives (\$1m) and the full year effect of 2004-05 new initiatives (\$2.303m). These are offset by the removal of car parking funding (\$1.4m) and savings initiatives (\$0.750m).

Balance Sheet

- cash and investments:
 - the increase of \$2.498m in cash and \$14.860m in investments in the 2004-05 estimated outcome from the original budget relates mainly to unspent Commonwealth specific purpose payments and other deferred projects, deferred purchases of medical equipment and information technology systems; and
 - the decrease of \$18.256m in investments in the 2005-06 Budget from the 2004-05 estimated outcome relates to the utilisation of these funds for the items referred to above.
- receivables: the increase of \$5.862m in the 2004-05 estimated outcome from the original budget is to bring the estimated outcome and outyear figures in-line with the actual outcome for 2003-04;
- inventories: the increase of \$1.179m in the 2004-05 estimated outcome from the original budget reflects the higher than anticipated level of stock held by ACT Health at 30 June 2004;

- property, plant and equipment:
 - the decrease of \$35.181m in the 2004-05 estimated outcome from the original budget relates mainly to deferred medical equipment purchases and delayed capital works projects. In addition, information technology assets have been reclassified as intangibles; and
 - The increase of \$24.444m in the 2005-06 Budget from the 2004-05 estimated outcome relates mainly to the catch-up in equipment purchases (\$5.990m), capital works (\$7.224m) and completion of capital works in progress (\$6.888m). It also changes the new 2005-06 capital works program (\$4.010m), planned completion of the 2004-05 program (\$4.4m), new initiatives (\$4.330m) and recurrent equipment program (\$4.599m). These are offset by depreciation (\$14.963m).
- intangibles:
 - the increase of \$2.559m in the 2004-05 estimated outcome from the original budget mainly relates to the transfer of information technology assets into this category of assets; and
 - the increase of \$6.284m in the 2005-06 Budget from the 2004-05 estimated outcome relates to the expected completion of the patient admission system.
- capital works in progress:
 - the increase of \$3.314m in the 2004-05 estimated outcome from the original budget relates to delays in the paediatrics refurbishment, the building 10 lifts upgrade, the orthopaedic theatre refurbishment, the anatomical pathology laboratory refurbishment and the imaging department reception and work area refurbishment; and
 - the decrease of \$4.888m in 2005-06 Budget from the 2004-05 estimated outcome relates to the planned completion of works in progress for capital works projects.
- current employee benefits: the increase of \$1.125m in the 2004-05 estimated outcome from the original budget and the increase of \$3.563m in the 2005-06 Budget from the 2004-05 estimated outcome relates mainly to the higher level of pay rises negotiated for nursing, clerical, professional, technical and health service officers (template agreement) than originally factored into the 2004-05 Budget. In addition, a 3% payrise was awarded to medical officers during 2004-05.
- other current liabilities:
 - the increase of \$2.207m in the 2004-05 estimated outcome from the original budget relates to higher than anticipated deferral of Commonwealth specific purpose payments and other deferred projects; and
 - the decrease of \$3.133m in the 2005-06 Budget from the 2004-05 estimated outcome relates to the utilisation of these funds.
- non current employee benefits: the decrease of \$0.889m in the 2004-05 estimated outcome from the original budget reflects the lower than anticipated result from the 2003-04 audited outcome. This is offset by increases for higher pay outcomes in the nursing and template (clerical) EBAs than originally factored into the 2004-05 Budget and the 3% payrise for medical officers.

ACT Health
Statement of Income and Expenses on Behalf of the Territory

2004-05 Budget \$'000		2004-05 Est.Outcome \$'000	2005-06 Budget \$'000	Var %	2006-07 Estimate \$'000	2007-08 Estimate \$'000	2008-09 Estimate \$'000
Income							
Revenue							
15 881	Payment for Expenses on behalf of Territory	7 426	18 631	151	6 167	3 476	3 547
679	Taxes Fees and Fines	679	695	2	712	728	746
121 284	Grants from the Commonwealth	121 091	126 935	5	130 504	135 736	136 085
137 844	Total Revenue	129 196	146 261	13	137 383	139 940	140 378
Gains							
0	Total Gains	0	0	-	0	0	0
137 844	Total Income	129 196	146 261	13	137 383	139 940	140 378
Expenses							
15 881	Grants and Purchased Services	7 426	18 631	151	6 167	3 476	3 547
121 963	Transfer Expenses	121 770	127 630	5	131 216	136 464	136 831
137 844	Total Ordinary Expenses	129 196	146 261	13	137 383	139 940	140 378
0	Operating Result	0	0	-	0	0	0

ACT Health
Statement of Assets and Liabilities on Behalf of the Territory

Budget as at 30/6/05 \$'000		Est.Outcome as at 30/6/05 \$'000	Planned as at 30/6/06 \$'000	Var %	Planned as at 30/6/07 \$'000	Planned as at 30/6/08 \$'000	Planned as at 30/6/09 \$'000
	Current Assets						
284	Cash	289	289	-	289	289	289
16	Receivables	11	11	-	11	11	11
300	Total Current Assets	300	300	-	300	300	300
300	TOTAL ASSETS	300	300	-	300	300	300
	Current Liabilities						
300	Payables	300	300	-	300	300	300
300	Total Current Liabilities	300	300	-	300	300	300
300	TOTAL LIABILITIES	300	300	-	300	300	300
0	NET ASSETS	0	0	-	0	0	0
	REPRESENTED BY FUNDS EMPLOYED						
0	Accumulated Funds	0	0	-	0	0	0
0	TOTAL FUNDS EMPLOYED	0	0	-	0	0	0

ACT Health
Budgeted Statement of Cashflows on Behalf of the Territory

2004-05 Budget \$'000		2004-05 Est.Outcome \$'000	2005-06 Budget \$'000	Var %	2006-07 Estimate \$'000	2007-08 Estimate \$'000	2008-09 Estimate \$'000
CASH FLOWS FROM OPERATING ACTIVITIES							
Receipts							
15 881	Cash from Government for EBT	7 426	18 631	151	6 167	3 476	3 547
679	Taxes, Fees and Fines	679	695	2	712	728	746
121 284	Grants Received from the Commonwealth	121 091	126 935	5	130 504	135 736	136 085
1 517	Other Revenue	498	1 593	220	340	64	64
139 361	Operating Receipts	129 694	147 854	14	137 723	140 004	140 442
Payments							
15 881	Grants and Purchased Services	7 426	18 631	151	6 167	3 476	3 547
1 343	Other	497	1 593	221	340	64	64
121 963	Territory Receipts to Government	121 770	127 630	5	131 216	136 464	136 831
139 187	Operating Payments	129 693	147 854	14	137 723	140 004	140 442
174	NET CASH INFLOW/(OUTFLOW) FROM OPERATING ACTIVITIES	1	0	-100	0	0	0
174	NET INCREASE/(DECREASE) IN CASH HELD	1	0	-100	0	0	0
110	CASH AT BEGINNING OF REPORTING PERIOD	288	289	..	289	289	289
284	CASH AT THE END OF THE REPORTING PERIOD	289	289	-	289	289	289

Notes to the Budget Statements

Significant variations are as follows:

Statement of Income and Expenses on Behalf of the Territory

- payment for expenses on behalf of the Territory:
 - the decrease of \$8.455m in the 2004-05 estimated outcome from the original budget relates to delays in the capital works programs at Calvary Public Hospital; and
 - the increase of \$11.205m in the 2005-06 Budget from the 2004-05 estimated outcome relates to the deferral of capital works projects and the new 2005-06 capital works program at Calvary Public Hospital, and increased funding to HealthPACT for indexation and the commencement of the childhood obesity measures, announced in the 2004-05 Budget.
- grants from the Commonwealth: the increase of \$5.844m in the 2005-06 Budget from the 2004-05 estimated outcome relates mainly to increases in the Australian Health Care Agreement (\$5.420m), Home and Community Care (\$0.886m) and Illicit Drug Packages (\$1.003m), offset by a decrease in the Australian Immunisation Agreement (\$1.541m).
- grants and purchased services: these variances are the same as those identified above for ‘payment for expenses on behalf of the Territory’.
- transfer expenses: these variances relate mainly to the movement identified above for ‘grants from the Commonwealth’.

Health and Community Care Operating Statement

2004-05 Budget \$'000		2004-05 Est.Outcome \$'000	2005-06 Budget \$'000	Var %	2006-07 Estimate \$'000	2007-08 Estimate \$'000	2008-09 Estimate \$'000
Income							
Revenue							
491 073	Government Payment for Outputs	502 509	533 205	6	559 950	583 946	608 604
90 109	User Charges - Non ACT Government	100 341	107 219	7	110 960	112 066	113 387
3 097	User Charges - ACT Government	2 597	2 508	-3	2 570	2 634	2 666
5 676	Grants from the Commonwealth	6 876	6 500	-5	6 670	6 844	6 969
1 147	Interest	1 447	1 236	-15	1 186	1 186	1 186
5 038	Other Revenue	5 238	5 608	7	5 747	5 889	5 978
259	Resources Received free of charge	681	664	-2	682	700	723
596 399	Total Revenue	619 689	656 940	6	687 765	713 265	739 513
Gains							
0	Total Gains	0	0	-	0	0	0
596 399	Total Income	619 547	656 940	6	687 765	713 265	739 513
Expenses							
265 845	Employee Expenses	281 095	298 100	6	311 836	322 255	332 049
34 058	Superannuation Expenses	34 952	37 606	8	38 872	39 387	39 843
169 702	Supplies and Services	172 163	179 356	4	185 646	193 708	202 362
14 244	Depreciation and Amortisation	13 500	14 963	11	15 966	16 250	15 987
5 836	Cost of Goods Sold	7 500	8 032	7	8 182	8 335	8 535
120 003	Grants and Purchased Services	123 287	130 834	6	139 246	146 368	153 239
2 217	Other Expenses	2 171	2 382	10	2 440	2 499	2 599
611 905	Total Ordinary Expenses	634 668	671 273	6	702 188	728 802	754 614
-15 506	Operating Result From Ordinary Activities	-14 979	-14 333	4	-14 423	-15 537	-15 101
0	Extraordinary Revenue	-142	0	-100	0	0	0
102	Extraordinary Expense	350	0	-100	0	0	0
-15 608	Operating Result	-15 471	-14 333	7	-14 423	-15 537	-15 101

Additional ACT Health Operating Statements

The following operating statements are published to provide an additional level of transparency and accountability into the operations of ACT Health.

The Canberra Hospital Operating Statement

2004-05*		2004-05	2005-06		2006-07	2007-08	2008-09
Budget		Est.Outcome	Budget	Var	Estimate	Estimate	Estimate
\$'000		\$'000	\$'000	%	\$'000	\$'000	\$'000
Income							
Revenue							
239 479	Government Payment for Outputs	245 839	256 643	4	266 332	270 325	274 884
32 457	User Charges - Non ACT Government	37 366	37 530	..	38 468	39 430	40 416
612	User Charges - ACT Government	612	627	2	643	659	675
5 676	Grants from the Commonwealth	6 877	6 500	-5	6 663	6 829	7 000
418	Interest	558	557	..	557	557	557
3 389	Other Revenue	3 967	3 674	-7	3 766	3 860	3 956
0	Resources Received Free of Charge	134	134	-	137	141	144
282 031	Total Revenue	295 353	305 665	3	316 565	321 801	327 632
Gains							
0	Total Gains	0	0	-	0	0	0
282 031	Total Income	295 353	305 665	3	316 565	321 801	327 632
Expenses							
154 577	Employee Expenses	164 071	169 690	3	176 478	179 125	181 453
16 980	Superannuation Expenses	18 976	20 993	11	21 833	22 160	22 448
109 545	Supplies and Services	112 586	112 827	..	115 648	118 539	121 502
10 317	Depreciation and Amortisation	10 174	10 174	-	10 674	10 674	10 674
0	Other Expenses	134	134	-	137	141	144
291 419	Total Ordinary Expenses	305 941	313 818	3	324 769	330 639	336 222
-9 388	Operating Result	-10 588	-8 153	23	-8 204	-8 838	-8 590

* The 2004-05 Budget figures have been updated to remove the Cancer and Aged Care and Rehabilitation streams, which are no longer reported within The Canberra Hospital.

Calvary Public Hospital Operating Statement

2004-05*		2004-05	2005-06		2006-07	2007-08	2008-09
Budget		Est.Outcome	Budget	Var	Estimate	Estimate	Estimate
\$'000		\$'000	\$'000	%	\$'000	\$'000	\$'000
Income							
Revenue							
3 430	User Charges - Non ACT Government	3 470	3 530	2	3 565	3 601	3 637
80 819	User Charges - ACT Government	80 747	85 603	6	88 989	92 502	93 704
5 663	Capital Grants	3 332	15 922	378	3 395	640	640
320	Interest	340	320	-6	150	100	100
1 050	Other Revenue	1 251	1 289	3	1 321	1 354	1 388
3 249	Resources Received Free of Charge	3 249	3 400	5	3 536	3 677	3 825
94 531	Total Revenue	92 389	110 063	19	100 957	101 874	103 294
Gains							
0	Total Gains	0	0	-	0	0	0
94 531	Total Income	92 389	110 063	19	100 957	101 874	103 294
Expenses							
59 397	Employee Expenses	59 287	62 600	6	65 104	67 709	68 589
5 398	Superannuation Expenses	5 601	5 825	4	6 058	6 300	6 382
23 914	Supplies and Services	24 599	25 990	6	26 640	27 306	27 988
3 800	Depreciation and Amortisation	3 559	3 720	5	3 750	4 148	4 546
92 509	Total Ordinary Expenses	93 046	98 135	5	101 552	105 463	107 506
2 022	Operating Result	-657	11 928	#	-596	-3 589	-4 212

* The Operating Statements published for Calvary Public Hospital this year include Mental Health activity.

Community Health Operating Statement

2004-05*		2004-05	2005-06		2006-07	2007-08	2008-09
Budget		Est.Outcome	Budget	Var	Estimate	Estimate	Estimate
\$'000		\$'000	\$'000	%	\$'000	\$'000	\$'000
Income							
Revenue							
51 303	Government Payment for Outputs	51 375	55 033	7	57 121	58 022	58 911
1 320	User Charges - Non ACT Government	1 534	1 572	2	1 611	1 652	1 693
1 868	User Charges - ACT Government	1 790	1 211	-32	1 241	1 272	1 304
634	Other Revenue	872	895	3	917	940	964
0	Resources Received Free of Charge	52	52	-	53	55	56
55 125	Total Revenue	55 623	58 763	6	60 944	61 940	62 928
Gains							
0	Total Gains	0	0	-	0	0	0
55 125	Total Income	55 623	58 763	6	60 944	61 940	62 928
Expenses							
36 187	Employee Expenses	38 379	41 070	7	42 713	43 353	43 917
4 895	Superannuation Expenses	5 573	5 875	5	6 110	6 202	6 282
13 244	Supplies and Services	12 059	12 241	2	12 547	12 861	13 182
217	Depreciation and Amortisation	178	178	-	178	178	178
1 664	Grants and Purchased Services	0	0	#	0	0	0
0	Other Expenses	52	52	-	53	55	56
56 207	Total Ordinary Expenses	56 241	59 416	6	61 601	62 648	63 616
-1 082	Operating Result	-618	-653	-6	-657	-708	-688

* The 2004-05 Budget figures have been updated to remove the Cancer and Aged Care and Rehabilitation streams, which are no longer reported within Community Care.

Mental Health ACT Operating Statement

2004-05*		2004-05	2005-06		2006-07	2007-08	2008-09
Budget		Est.Outcome	Budget	Var	Estimate	Estimate	Estimate
\$'000		\$'000	\$'000	%	\$'000	\$'000	\$'000
	Income						
	Revenue						
35 446	Government Payment for Outputs	38 741	40 129	4	41 560	42 276	43 000
401	User Charges - Non ACT Government	401	411	2	421	432	443
5	Other Revenue	5	5	-	5	5	5
35 852	Total Revenue	39 147	40 545	4	41 986	42 713	43 448
	Gains						
0	Total Gains	0	0	-	0	0	0
35 852	Total Income	39 147	40 545	4	41 986	42 713	43 448
	Expenses						
22 722	Employee Expenses	23 770	24 976	5	25 975	26 365	26 707
2 933	Superannuation Expenses	3 039	3 188	5	3 316	3 365	3 409
6 253	Supplies and Services	7 416	7 692	4	7 884	8 081	8 283
	Depreciation and Amortisation	162	162	-	162	162	162
4 438	Grants and Purchased Services	5 265	5 014	-5	5 139	5 268	5 400
36 346	Total Ordinary Expenses	39 652	41 032	3	42 476	43 241	43 961
-494	Operating Result	-505	-487	4	-490	-528	-513

* The 2004-05 Budget figures have been updated to only show direct Mental Health ACT expenditure. This presentation is consistent with other Divisional Operating Statements published for ACT Health.

