

September Quarterly Management Report

for the financial quarter
and year to date ending
30 September 2005

Australian Capital Territory Government



Table of Contents

EXECUTIVE SUMMARY	3
1 GENERAL GOVERNMENT SECTOR FINANCIAL PERFORMANCE	5
1.1 SUMMARY OF OPERATING PERFORMANCE.....	5
1.2 REVENUE FOR THE QUARTER ENDING SEPTEMBER 2005	5
1.3 EXPENSES FOR THE QUARTER ENDING SEPTEMBER 2005	6
1.4 PROJECTED END OF YEAR OPERATING RESULT	7
2 PUBLIC TRADING ENTERPRISE SECTOR FINANCIAL PERFORMANCE	7
2.1 SUMMARY OF OPERATING PERFORMANCE.....	7
2.2 REVENUE FOR THE FINANCIAL YEAR ENDING SEPTEMBER 2005.....	7
2.3 EXPENSES FOR THE FINANCIAL YEAR ENDING SEPTEMBER 2005.....	7
3 THE FINANCIAL POSITION AS AT 30 SEPTEMBER 2005.....	9
3.1 THE FINANCIAL POSITION OF THE GENERAL GOVERNMENT SECTOR	9
3.2 THE FINANCIAL POSITION OF THE PUBLIC TRADING ENTERPRISE SECTOR.....	10
3.3 SHORT-TERM OUTLOOK – LIQUIDITY	11
3.4 LONGER-TERM OUTLOOK – FINANCIAL STABILITY	12
3.5 SUPERANNUATION ASSETS AND LIABILITIES	13
4 CASH MANAGEMENT.....	14
4.1 THE TERRITORY’S TOTAL CASH POSITION	14
4.2 THE TERRITORY’S CASH FLOWS	14
5 ATTACHMENTS	
A) ACCOUNTING BASIS	
B) GENERAL GOVERNMENT SECTOR - TAXES, FEES AND FINES	
C) GENERAL GOVERNMENT SECTOR - FINANCIAL STATEMENTS	
D) PUBLIC TRADING ENTERPRISE SECTOR - FINANCIAL STATEMENTS	
E) AUSTRALIAN CAPITAL TERRITORY - FINANCIAL STATEMENTS	
F) AGENCY YEAR TO DATE REVENUES AND EXPENSES	

Consolidated Financial Management Report Executive Summary - September 2005

Executive Summary

The operating results of the General Government and Public Trading Enterprise Sectors are outlined below.

	2004-05	2005-06	September Quarter 2005		
	<i>Audited Outcome</i>	<i>Annual Budget</i>	<i>Budget</i>	<i>Actual</i>	<i>Variance</i>
Operating Result by Sector * (after extraordinary items)	\$'000	\$'000	\$'000	\$'000	\$'000
General Government Sector	25,790	(91,493)	60,357	158,841	98,484
Public Trading Enterprise Sector	62,079	39,318	4,291	7,192	2,901
Total Territory Sector	(11,570)	(112,493)	61,930	166,033	104,102

* A detailed Statement of Financial Performance can be found in the attachments.

The Territory's operating result for 30 September 2005 is a surplus of \$166.0m. This result represents an improvement of \$104.1m from the year to date budget. The higher than expected result is primarily due to increased revenue of \$100.5m. The major factors influencing this result are highlighted below.

Major variations in revenues from the 2005-06 year to date budget include increases in:

- other revenues of \$55.2m, largely relating to a \$70.8m gain on superannuation investments partially offset by slower than expected land sales reducing revenues by \$16.9m; and
- taxes, fees and fines of \$40.5m, primarily conveyance revenue, change of use charge and general rates.

Considerable caution should be exercised in projecting this strong year to date result for the year as a whole. In particular, it should be noted that while investment returns in the September Quarter were very strong, investment markets have been quite volatile since then. In addition, the higher commercial conveyancing and change of use charge revenues in the September Quarter were mainly due to a small number of "one-off" transactions. A more detailed discussion on the performance of GGS and PTE sector revenue and expenditure items is included in the body of the report.

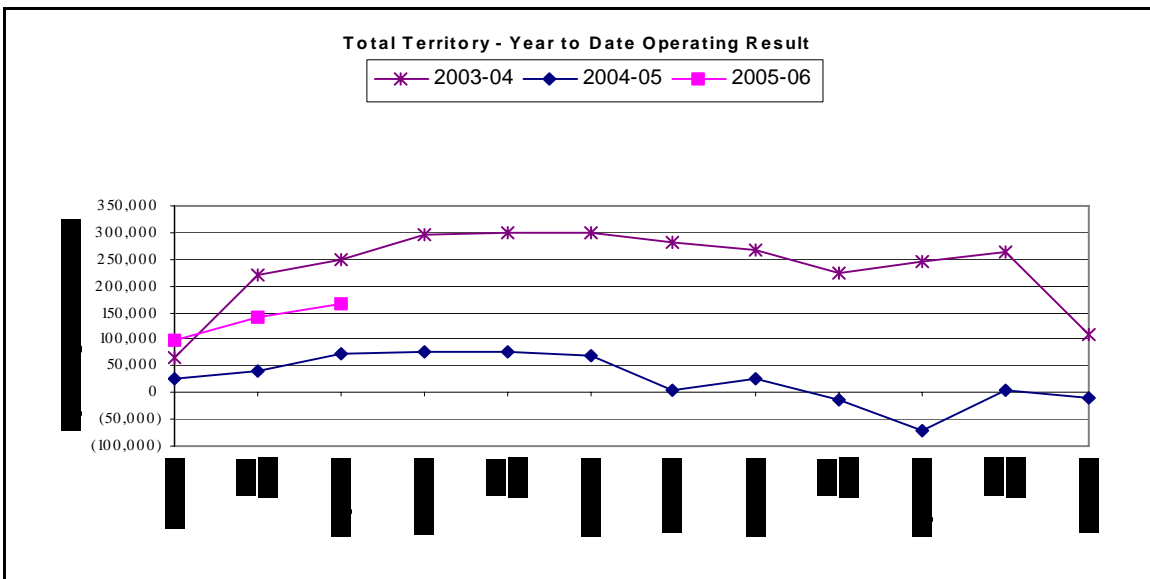
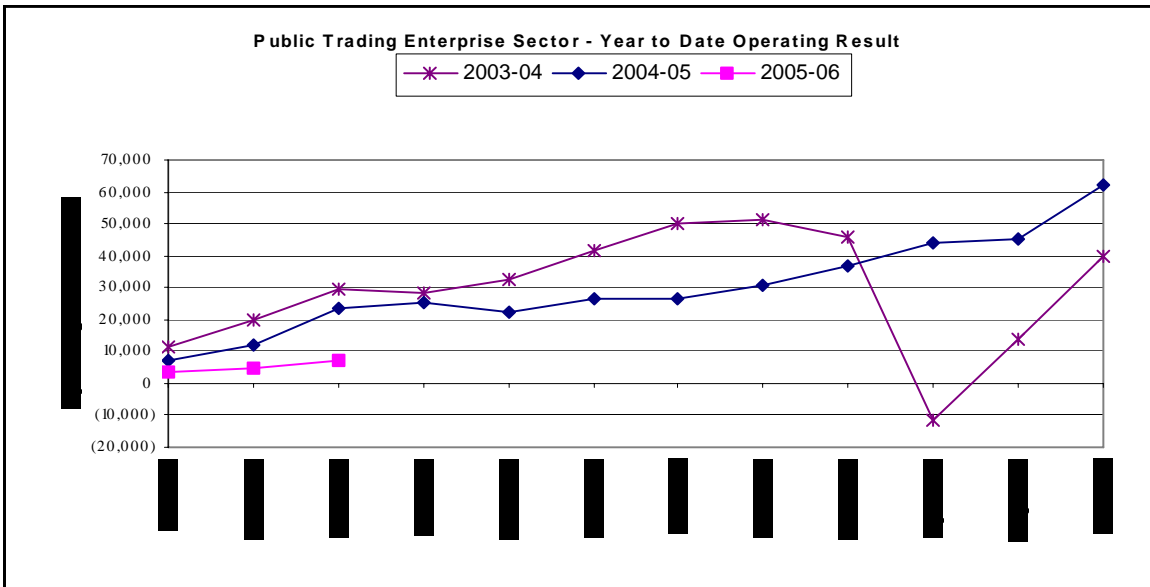
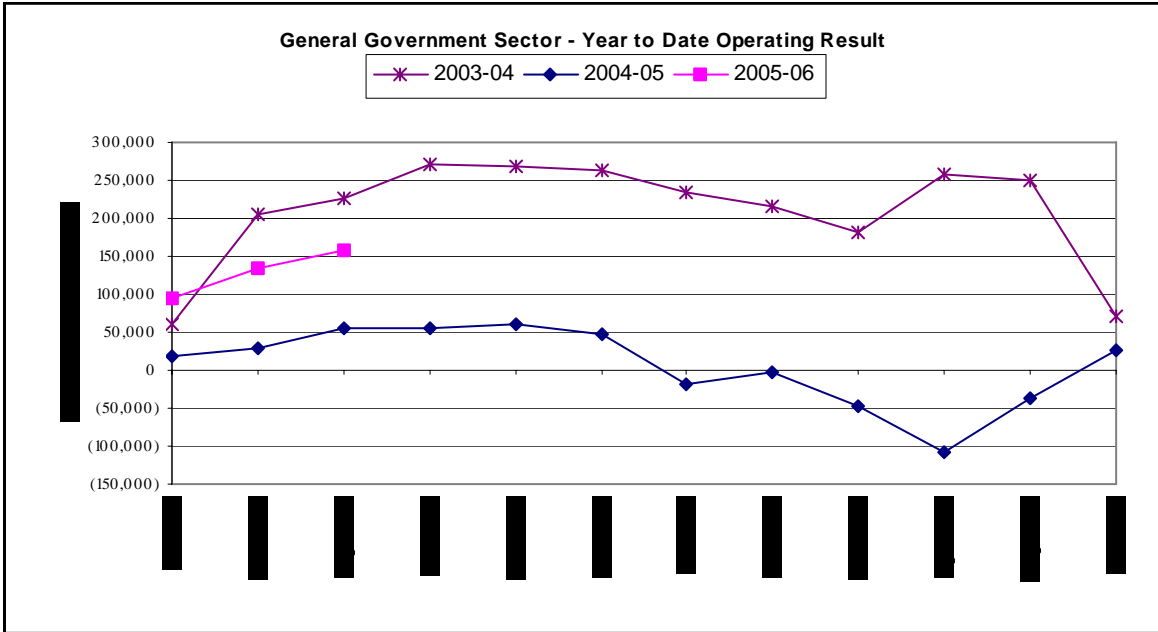
Cash

The Territory's cash position is sound. The Territory's Unencumbered Cash (TUC), i.e., cash which is in excess of current requirements that has not been formally allocated against a planned expenditure, was \$384m as at 30 September 2005.

TUC has increased \$5m in 2005-06 from 30 June 2005.

Consolidated Financial Management Report

Executive Summary - September 2005



1 General Government Sector Financial Performance

1.1 Summary of operating performance

The operating result for the General Government Sector (GGS) for the quarter ending 30 September 2005 was a surplus of \$158.8m. This is an increase of \$98.5m from the 2005-06 year to date budget.

General Government Sector *	2004-05	2005-06	September Quarter 2005		
	Audited Outcome	Annual Budget	Budget	Actual	Variance
	\$'000	\$'000	\$'000	\$'000	\$'000
Revenue**	2,707,467	2,715,958	734,667	831,534	96,867
Expenses**	2,681,608	2,807,451	674,310	672,693	(1,617)
Extraordinary Revenue	0	0	0	0	0
Extraordinary Expenses	69	0	0	0	0
OPERATING RESULT	25,790	(91,493)	60,357	158,841	98,484

* A detailed Statement of Financial Performance can be found in the attachments.

** Includes Revenue/Expenses Associated with Joint Ventures.

1.2 Revenue for the quarter ending September 2005

Revenue to the end of September 2005 was \$831.5m, up \$96.9m from the year to date budget, due to a number of variances across the GGS agencies. These variances are presented below.

Other revenues were \$56.4m above the year to date budget due largely to a \$70.8m improvement in the value of superannuation investments offset by a \$16.9m shortfall in land revenue primarily due to slower than planned sales for residential land at Wells Station, the passing in at auction of site 3a at Kingston Foreshore and the deferral of the second commercial land auction for the year until the second quarter of 2005.

Taxes, Fees and Fines were \$38.5m above the year to date budget due largely to increases of:

- \$16.3m in conveyance revenue due to several large unanticipated commercial transactions in July;
- \$13.7m in fees primarily reflecting two large unanticipated change of use charges within Civic, in total \$12.9m;
- \$2.1m in general insurance stamp duty reflecting the seasonal trend against a pro rata budget;
- \$1.7m in general rates; and

Consolidated Financial Management Report

Financial Performance - September 2005

- \$1.1m in ambulance levy revenue due to a one-off abnormal voluntary disclosure of past under reporting.

User charges non - ACT Government were \$2.4m above the year to date budget due largely to unbudgeted sales and service receipts of \$1m by the Australian International Hotel School before transition in the December Quarter of 2005 and increased health receipts of \$0.6m primarily inpatient fees.

Variations in grants from the Commonwealth partially offset these favourable variances with a \$3.3m decrease from the \$275.2m year to date budget due to timing differences in the receipt of Commonwealth funding for education.

1.3 Expenses for the quarter ending September 2005

Expenses to the end of September 2005 were \$672.7m, down \$1.6m from the year to date budget of \$674.3m, due to a number of variances across the GGS agencies. Significant variances are presented below.

Grants and purchased services were \$3.8m below the year to date budget largely due to:

- a \$1.5m slippage in Knowledge Fund expenditure; and
- timing differences associated with the payment of grants for education of \$1.3m, disability and community services of \$1.1m, children, youth and family services of \$0.9m, and health of \$0.8m.

These were partially offset by \$2.4m increase reflecting higher than expected grants to Public Trading Enterprise sector of \$1.4m and early payment of an arts grant of \$1.0m to the Australian National University.

Supplies and services were \$3.3m below the year to date budget largely due to:

- \$3.0m due to delays in consultants contract settlements primarily relating to the Asbestos Taskforce, Shaping our Territory and the Office of Sustainability; and
- \$0.6m primarily relating to delays in sponsorships associated with high performance sport.

The below budget variances were partially offset by other expenses which were \$6.8m above the year to date budget. The above budget other expenses were primarily due to an actuarial revision of insurance provisions of \$5.8m based on the audited outcome for 2004-05.

2 Public Trading Enterprise Sector Financial Performance

2.1 Summary of operating performance

The operating result for the Public Trading Enterprise Sector (PTE) for the quarter ending 30 September 2005, after income tax equivalents of \$15.1m, was a surplus of \$7.2m. This was \$2.9m above the year to date budget.

Public Enterprise Trading Sector *	2004-05	2005-06	September Quarter 2005		
	Audited Outcome	Annual Budget	Budget	Actual	Variance
	\$'000	\$'000	\$'000	\$'000	\$'000
Revenue**	440,863	445,015	115,948	116,154	206
Expenses**	376,318	391,377	96,967	93,838	(3,129)
Extraordinary Revenue	0	0	0	0	0
Extraordinary Expenses	792	0	0	0	0
Tax Equivalent	(1,674)	(14,320)	(14,690)	(15,124)	(434)
OPERATING RESULT	62,079	39,318	4,291	7,192	2,901

* A detailed Statement of Financial Performance can be found in the attachments.

** Includes Revenue/Expenses Associated with Joint Ventures.

2.2 Revenue for the financial year ending September 2005

Revenue at the end of September 2005 of \$116.2m was not materially different from the year to date budget of \$115.9m. However, the following variations have occurred.

Revenue of associates and joint ventures were \$2.3m above the year to date budget due to higher than estimated returns from ActewAGL.

Other revenues offset the favourable variances with a \$3.0m decrease from the year to date budget due to:

- reduced asset transfers of \$1.6m from the Land Development Agency to ACTEW; and
- lower than anticipated gains on disposals of housing stock of \$0.7m.

2.3 Expenses for the financial year ending September 2005

Expenses to the end of September 2005 were \$93.8m, down by \$3.1m from the year to date budget of \$97.0m, due to a number of variances across PTE agencies. These variances are presented below.

Supplies and services expenses were \$1.4m below the year to date budget primarily due to delays in maintenance and property related expenses.

Grants and purchased services were \$1.0m below the year to date budget primarily due to continuing delays with a number of community housing projects.

Consolidated Financial Management Report
Financial Performance - September 2005

Depreciation and amortisation expense was \$0.8m below the year to date budget primarily due to a \$0.5m decrease from ACTEW resulting from lower than anticipated gifted assets in 2004-05.

3 The Financial Position as at 30 September 2005

3.1 The Financial Position of the General Government Sector

GGS liquidity, as measured by the current ratio (current assets over current liabilities)*, has improved from the 2004-05 audited result of 2.25:1 to 2.38:1. This is largely attributable to a stronger year to date result for current receivables.

The financial stability of the GGS is measured by the debt ratio (total liabilities over total assets)*, and indicates the longer-term stability of the GGS and its capacity to meet outstanding debts from its asset base. The debt ratio percentage for the GGS at the end of September was 18%, which is the same as the 2004-05 audited outcome. This relatively low ratio indicates a prudent level of liabilities.

Service delivery assets at the end of September were \$6,091m, which was marginally higher than the 2004-05 audited outcome of \$6,083m.

Total liabilities of the GGS at the end of September were \$3,981.0m, an increase of \$90.7m from the 2004-05 audited result. This increase largely reflects the increase in employee benefits and payables.

Net worth** of the GGS at the end of September was \$5,434.9m, an increase of \$150.8m from the 2004-05 audited result, due largely to the revaluation of superannuation investments and increases in current receivables partially offset by increases in employee benefits and payables.

* When calculating both the current and debt ratios, both investments and liabilities relating to superannuation are excluded, as these are not available to meet general debt. Superannuation is discussed separately.

** Net worth equals net assets, that is, total assets less total liabilities.

3.2 The Financial Position of the Public Trading Enterprise Sector

PTE liquidity, as measured by the current ratio (current assets over current liabilities), increased from the 2004-05 audited result of 1.03:1 to 1.12:1. This ratio indicates that the PTE is able to meet its short-term debt from short-term cash and equivalents. This is largely attributable to stronger year to date results for investments.

The financial stability of the PTE as measured by the debt ratio (total liabilities over total assets) indicates the longer-term stability of the PTE and its capacity to meet outstanding debts from its asset base. The debt ratio percentage for the PTE at the end of September remained low at 15%, marginally up from the 2004-05 audited outcome of 14%. This relatively low debt ratio reflects the PTE's large asset base, attributable to ACTEW infrastructure and public housing properties controlled by Housing ACT.

Service delivery assets at the end of September were \$4,024.5m, which is marginally lower than the 2004-05 audited result of \$4,031.4m.

Total liabilities of the PTE at the end of September were \$626.6m, a \$17.4m increase from the 2004-05 audited result of \$609.3m.

Net worth of the PTE at the end of September was \$3,985.2m, an increase of \$4.3m from the 2004-05 audited result of \$3,980.9m.

3.3 Short-term outlook – Liquidity

The current ratio is used to indicate an organisation's liquidity and equates to current assets over current liabilities. This ratio indicates the government's ability to meet short-term debt from short-term assets such as cash and cash equivalents.

Superannuation investments and liabilities have been excluded in calculating the current ratio, as these investments are not available for the repayment of any debt other than superannuation liabilities.

Current Ratio *	Audited Outcome			Annual Budget 2005-06	Qtr 1 YTD Actual 2005-06
	2002-03	2003-04	2004-05		
GGS	1.55 :1	2.77 :1	2.25 :1	1.74 :1	2.38 :1
PTE	2.78 :1	1.79 :1	1.03 :1	0.81 :1	1.12 :1
Total Territory	1.82 :1	2.89 :1	2.19 :1	1.65 :1	2.28 :1

* The current ratio has been calculated **excluding** superannuation investments and liabilities.

Although the Territory's liquidity position has been subject to fluctuation over the past five years, it remains strong with a healthy investment balance.

3.4 Longer-term outlook – Financial Stability

The debt ratio (total liabilities over total assets) is used to indicate an organisation's longer-term stability, in particular its ability to meet debts from its asset base. The lower the percentage, the better the ability to cover debt from assets. This ratio also excludes the total value of equity investments, superannuation investments, and the total superannuation liability.

Debt Ratio (%) *	Audited Outcome			Annual Budget 2005-06	Qtr 1 YTD Actual 2005-06
	2002-03	2003-04	2004-05		
GGS	19	18	18	18	18
PTE	16	14	14	14	15
Total Territory	14	13	13	14	14

* The debt ratio has been calculated **excluding** equity investments, superannuation investments and superannuation liabilities.

Over the last several years the Territory's debt ratio percentage has remained reasonably steady at its current level of 14%. This remains a low percentage.

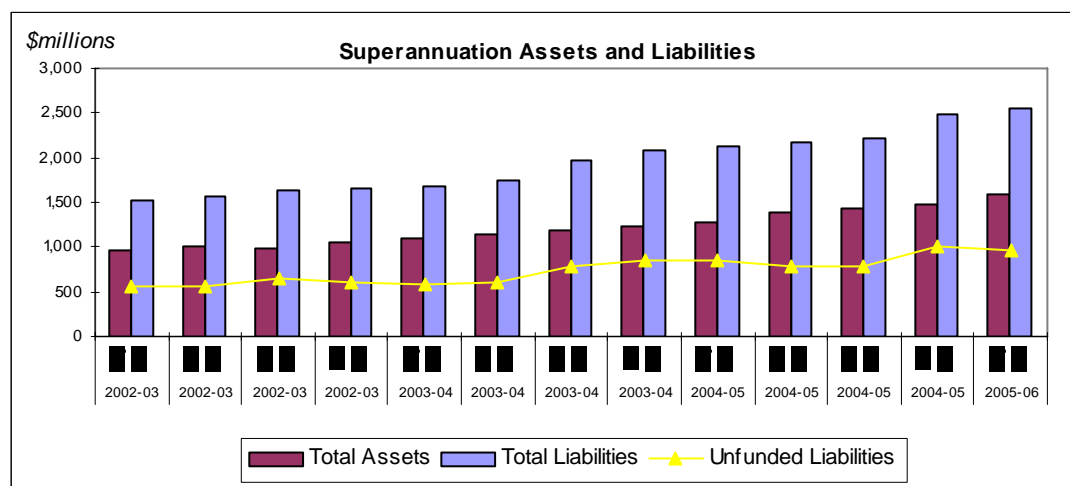
The Territory continues to maintain a manageable financial outlook with a clear ability to meet both short and longer-term debt and maintain its asset base. This relatively low ratio demonstrates a prudent level of liabilities.

Consolidated Financial Management Report Financial Position - September 2005

3.5 Superannuation Assets and Liabilities

The Territory's superannuation liability of \$2,542m as at 30 September 2005 is the Territory's single largest liability. At 30 September 2005 it was 61% of total liabilities.

Superannuation investments of \$1,589m existed at 30 September 2005, providing funding for 63% of the superannuation liability, which is marginally higher than the 59% coverage of the 2004-05 audited result.



Year to date gains on investment were \$91.5m, which is \$70.8m greater than the year to date budget of \$20.7m.

The following table provides the year to date performance of superannuation related investments.

Superannuation Related Investments	2004-05	2005-06	September Quarter 2005		
	Audited Outcome \$'000	Annual Budget \$'000	Budget \$'000	Actual \$'000	Variance \$'000
Investment Increments - revenue	146,400	85,840	20,710	91,466	70,756
Investment Decrements - expenditure	0	0	0	0	0
Dividends and Interest	19,190	19,787	4,947	6,584	1,638
Fees	(3,688)	(3,000)	(750)	(309)	441
Total	161,901	102,627	24,907	97,742	72,835

4 Cash Management

4.1 The Territory's total cash position

TUC is the measure of the Territory's cash balance, which is not allocated to an operating or investing requirement at the time of measurement, and is therefore a measure of liquidity.

The TUC as at 30 September 2005 was \$384m, a marginal increase from the opening position. The end of year TUC is estimated to be \$154m. This indicates that while a decrease in TUC is expected during the latter part of the financial year, there is no reason to expect a cash deficiency for the remainder of the financial year. The reduction in TUC is the result of the use of cash and investments to fund the capital works program.

	2005-06	2005-06	2005-06
	Opening Balance	September	Year End
	\$'m	YTD	Estimate
		\$'m	\$'m
Territory Unencumbered Cash	379	384	154

4.2 The Territory's cash flows

CASH FLOW	2004-05	2005-06	2005-06
	Audited	Annual Budget	September
	Outcome		Quarter
	\$'000	\$'000	\$'000
Total Operating Receipts:	2,786,502	2,897,947	738,377
Total Operating Payments	2,626,578	2,710,451	676,149
Cash Flows from Operating Activities	159,923	187,496	62,229
Purchase of PP&E*	305,169	443,618	42,972
Sale of PP&E*	29,040	59,414	9,180
Net Outflow from Capital Activities	(276,129)	(384,204)	(33,792)
Total Net Inflow from Operations and Capital	(116,205)	(196,708)	28,437

* PP&E = Property, Plant and Equipment.

Cash flows from operating activities relate to the general operations of government. They include receipts of taxes, fees, fines, Commonwealth grants and miscellaneous user charges. Outflows include payments relating to service provisions such as education, health and municipal services. Outflows can also be categorised as salary, supplies and services, and interest costs.

Cash outflows from operations exceed inflows. The September quarter result for the net cash inflow from operations and capital is \$28.4m as primarily reflecting seasonal trends in taxes, fees and fines revenue receipts.

Attachments

Accounting Basis

This consolidated quarterly financial management report has been prepared to meet the amended requirements of section 26 of the *Financial Management Act 1996* (the FMA) to produce whole of government financial reports 45 days after the end of each quarter.

The report summarises the financial performance of the Territory for the quarter and financial year to date ending 30 September 2005. In accordance with the FMA, this financial report includes all assets, liabilities, revenues, and expenses of the ACT Government sector, including those of departments, authorities, corporations, and other entities, or interests in other entities, of the ACT Government.

The information contained in this financial report has been prepared in accordance with the FMA and associated financial management guidelines, including the *ACT Accounting Policy Manual* (the APM) where applicable. The APM requires compliance with all applicable Australian Accounting Standards. Although some commercial entities are not required to report according to the APM, their accounts are also required to meet Australian Accounting Standards and generally accepted accounting principles.

This report provides financial management information and is not intended to form audited financial statements. Estimates and assumptions have been necessary in some cases to ensure this information is provided within a useful time frame. Any differences will relate primarily to accounting treatment of specific issues and elimination of internal trading, rather than non-disclosure of the whole of government financial position. Transactions and balances between government controlled entities have therefore been eliminated in accordance with the principles of AAS 24, '*Consolidated Financial Reports*'. Information has been consolidated to the Whole of Territory (as defined by section 21 of the FMA).

The financial statements are based on information and accounting policies of individual agencies. While some accounting policies may change when whole of government accounts are prepared, these will relate more to consistent treatment of issues rather than non-disclosure of items.

As of 1 July 2004, the September, December, and March Quarterly Management Reports is prepared using estimated year to date figures for the agencies listed below. These agencies are considered immaterial from a whole of government perspective.

- ACT Executive
- Auditor-General
- Canberra Cemeteries Trust
- Cultural Facilities Corporation
- HealthPACT
- Legal Aid Commission
- Public Trustee for the ACT
- Home Loan Portfolio
- Stadiums Authority
- ACT Gambling and Racing Commission
- Australian Capital Tourism Corporation
- CIT Solutions
- Exhibition Park in Canberra
- Independent Competition and Regulatory Commission
- Legislative Assembly Secretariat
- ACT Workcover
- Workers' Compensation Supplementation Fund

Actual year to date figures may be used where variances from year to date budget have a material impact on the Territory financial statements. The estimated outcome for these agencies will continue to be reflected in the Territory financial statements.

General Government Sector - Taxes, Fees and Fines

	2004-05	2005-06	2005-06	2005-06	2005-06
	Audited	Annual	September	September	September
	Outcome	Budget	Quarter YTD	Quarter YTD	Quarter YTD
	\$'000	\$'000	Budget	Actual	Variance
			\$'000	\$'000	\$'000
<i>General Taxes</i>					
Payroll Tax	184,930	213,938	50,000	53,958	3,958
General Rates	124,242	142,249	140,649	142,397	1,748
Land Tax	55,719	58,098	14,525	13,813	(712)
Debit Tax	14,057	0	0	30	30
Total General Taxes	378,948	414,285	205,174	210,198	5,024
<i>Stamp Duties</i>					
Conveyances	139,754	161,442	36,644	52,981	16,337
General Insurance - Stamp Duty	30,968	32,325	7,988	10,060	2,072
Hiring Duty	2,998	3,335	773	896	123
Leases	6,522	4,385	1,096	914	(182)
Life Insurance	562	697	145	161	16
Motor Vehicle Rego and Transfers	23,712	26,568	6,224	6,823	599
Transfer of Shares and Marketable Securities	6,042	8,330	1,603	766	(837)
Business Agreements	1,360	1,514	348	601	253
Other Duties	210	224	54	51	(3)
Total Duties	212,128	238,820	54,875	73,253	18,378
<i>Gambling Taxes</i>					
ACTTAB Licence Fee	1,288	1,360	340	340	0
Gaming Tax	31,341	32,538	8,135	8,135	0
Casino Tax	2,029	2,208	552	552	0
Interstate Lotteries	12,971	13,511	3,378	3,378	0
Total Gambling Taxes	47,630	49,617	12,404	12,404	0
<i>Other Taxes</i>					
Ambulance Levy	6,547	6,860	1,715	2,776	1,061
TOCTAX - Income Tax Equivalent	1,674	14,320	3,580	3,580	0
Other Taxes	8,221	21,180	5,295	6,356	1,061
Total Taxation Revenue before waivers	646,927	723,902	277,748	302,211	24,463
Waivers	4,356	5,087	0	0	0
Total Taxation Revenue	651,283	728,989	277,748	302,211	24,463
Fees	122,720	128,543	32,098	45,804	13,706
Fines	21,900	23,138	5,376	5,708	333
Total Taxes Fees and Fines	795,903	880,670	315,222	353,723	38,501

General Government Sector Statement of Financial Performance

	2004-05	2005-06	September Quarter 2005		September Quarter 2005 Year to Date		
	Audited Outcome	Annual Budget	Budget	Actual	Budget	Actual	Variance
	\$'000	\$'000	\$'000	\$'000	\$'000	\$'000	\$'000
Revenue							
Taxes, Fees and Fines	795,903	880,670	315,222	353,723	315,222	353,723	38,501
User Charges - Non ACT Government	201,295	216,328	51,302	53,681	51,302	53,681	2,379
User Charges - ACT Government	16,159	10,812	2,803	3,355	2,803	3,355	552
Grants from Commonwealth	1,108,111	1,148,171	275,155	271,880	275,155	271,880	(3,275)
Interest	79,916	69,020	18,091	20,451	18,091	20,451	2,360
Revenue of Associates and Joint Ventures	2,752	0	0	0	0	0	0
Dividend Revenue	99,439	60,318	0	0	0	0	0
Other Revenues	403,618	330,639	72,094	128,445	72,094	128,445	56,350
Resources Received Free of Charge	274	0	0	0	0	0	0
Total Revenues	2,707,467	2,715,958	734,667	831,534	734,667	831,534	96,867
Expenses							
Employee Expense	937,596	988,618	244,785	245,897	244,785	245,897	1,112
Superannuation Expenses	287,885	319,568	79,300	79,859	79,300	79,859	559
Supplies and Services	566,371	590,187	139,456	136,152	139,456	136,152	(3,304)
Depreciation and Amortisation	164,259	172,488	41,765	40,719	41,765	40,719	(1,046)
Borrowing Costs	44,925	49,401	12,135	11,168	12,135	11,168	(967)
Cost of Goods Sold	33,048	40,423	7,157	6,523	7,157	6,523	(635)
Grants and Purchased Services	466,663	516,077	120,812	117,061	120,812	117,061	(3,751)
Other Expense	150,189	98,078	20,850	27,606	20,850	27,606	6,756
Expenses of Associates and Joint Ventures	0	0	0	0	0	0	0
Transfer Expenses	30,671	32,611	8,048	7,707	8,048	7,707	(341)
Total Expense	2,681,608	2,807,451	674,310	672,693	674,310	672,693	(1,617)
Operating Result Before Extraordinary Items	25,859	(91,493)	53,357	158,841	60,357	158,841	98,484
Extraordinary Items (Net)	(69)	0	0	0	0	0	0
Operating Result	25,790	(91,493)	53,357	158,841	60,357	158,841	98,484

General Government Sector Statement of Financial Position

	<i>Audited Outcome as at 30/6/05 \$'000</i>	<i>Budgeted Balance as at 30/6/06 \$'000</i>	<i>YTD Result as at 30/09/05 \$'000</i>
Current Assets			
Cash	65,315	71,558	50,500
Receivables	130,048	211,060	229,782
Investments	668,322	348,298	699,461
Inventories	50,376	39,365	50,896
Capital Work in Progress	4,055	44	4,060
Other	32,322	13,655	77,431
Total Current Assets	950,437	683,980	1,112,130
Non Current Assets			
Receivables	367,785	350,729	366,681
Investments	1,722,678	1,865,243	1,834,317
Inventories	53,843	90,552	63,539
Property, Plant & Equipment	5,845,399	6,033,895	5,829,167
Intangibles	22,496	29,943	26,424
Works in Progress	129,283	197,576	143,124
Other	82,375	52,124	40,443
Total Non Current Assets	8,223,860	8,620,062	8,303,695
Total Assets	9,174,298	9,304,042	9,415,824
Current Liabilities			
Payables	126,463	134,568	134,731
Interest Bearing Liabilities	93,078	33,216	94,360
Finance Leases	37,780	58,751	40,051
Employee Benefits	188,930	201,496	225,057
Other Provisions	13,168	2,499	18,487
Other	38,481	27,275	36,342
Total Current Liabilities	497,899	457,805	549,028
Non Current Liabilities			
Payables	135,297	111,931	148,797
Interest Bearing Liabilities	613,669	648,199	612,694
Finance Leases	59,599	100,534	64,483
Employee Benefits	2,565,377	2,794,563	2,592,985
Other Provisions	14,554	5,069	10,083
Other	3,842	69	2,899
Total Non Current Liabilities	3,392,338	3,660,365	3,431,941
Total Liabilities	3,890,237	4,118,170	3,980,970
Net Assets	5,284,060	5,185,871	5,434,855
REPRESENTED BY FUNDS EMPLOYED			
Accumulated Funds	4,587,518	4,512,339	4,763,668
Reserve	696,542	673,532	671,187
TOTAL FUNDS EMPLOYED	5,284,060	5,185,871	5,434,855

General Government Sector Cashflow Statement

	2004-05	2005-06	September Quarter 2005		September Quarter 2005		Year to Date
	Outcome	Budget	Budget	Actual	Budget	Actual	Variance
	\$'000	\$'000	\$'000	\$'000	\$'000	\$'000	\$'000
Cash Flow from Operating Activities							
<i>Operating Receipts</i>							
Taxes, Fees and Fines	807,608	880,531	258,153	271,271	258,153	271,271	13,118
User Charges	224,819	226,636	50,586	47,528	50,586	47,528	(3,058)
Interest Received	80,342	68,219	16,771	18,880	16,771	18,880	2,109
Grants Received from the Commonwealth	1,117,044	1,159,311	273,584	268,716	273,584	268,716	(4,869)
Other Receipts	401,514	372,083	96,186	96,320	96,186	96,320	134
Territory Receipts transferred from Agencies	(0)	0	4,696	4,998	4,696	4,998	302
Total Operating Receipts	2,631,327	2,706,780	699,977	707,713	699,977	707,713	7,737
<i>Operating Payments</i>							
Related to Employees	1,025,193	1,064,802	258,540	254,391	258,540	254,391	(4,150)
Supplies and Services	570,740	581,128	123,649	128,062	123,649	128,062	4,413
Grants and Purchased Services	477,309	523,189	140,007	113,612	140,007	113,612	(26,395)
Borrowing Costs	45,720	49,401	10,807	12,745	10,807	12,745	1,939
Other	359,024	343,434	131,430	134,156	131,430	134,156	2,726
Payments to PTE Agencies for Outputs	30,666	30,228	7,557	7,707	7,557	7,707	150
Total Operating Payments	2,508,652	2,592,182	671,990	650,673	671,990	650,673	(21,317)
Net Cash Inflow/(Outflow) from Operating Activities	122,675	114,598	27,987	57,040	27,987	57,040	29,053
Cash Flows from Investing Activities							
<i>Investing Receipts</i>							
Sale of Property, Plant and Equipment	2,075	8,453	6,578	739	6,578	739	(5,839)
Sale of Land and Intangibles	2	0	0	0	0	0	0
Sale/Maturity of Investments	107,871	823	206	1,939	206	1,939	1,733
Repayment of Home Loan Principal	7,154	2,117	529	529	529	529	0
Repayment of Advance	5,767	6,993	1,399	1,399	1,399	1,399	0
Dividends	75,263	66,733	0	0	0	0	0
Total Investing Receipts	198,132	85,119	8,712	4,606	8,712	4,606	(4,106)
<i>Investing Payments</i>							
Purchase of Property, Plant and Equipment	187,195	356,827	58,374	26,928	58,374	26,928	(31,446)
Purchase of Land and Intangibles	1,323	3,945	33	0	33	0	(33)
Purchase of Investments	204,935	101,446	19,464	15,569	19,464	15,569	(3,894)
Loans Issued	25,000	0	0	0	0	0	0
Capital Payments	8,945	14,020	4,995	6,400	4,995	6,400	1,405
Total Investing Payments	427,398	476,238	82,865	48,897	82,865	48,897	(33,968)
Net Cash Inflow/(Outflow) from Investing Activities	(229,266)	(391,119)	(74,153)	(44,291)	(74,153)	(44,291)	29,862
Cash Flows from Financing Activities							
<i>Financing Receipts</i>							
Borrowings Received	18,079	59,701	99	20,768	99	20,768	20,669
Finance Leases	40,425	0	0	0	0	0	0
Total Financing Receipts	58,504	59,701	99	20,768	99	20,768	20,669
<i>Financing Payments</i>							
Repayment of Borrowings	3,556	62,007	3,852	22,615	3,852	22,615	18,763
Repayment of Finance leases	54,639	15,354	2,645	2,758	2,645	2,758	114
Repayment of Investments to Agencies	30,450	4,707	0	0	0	0	0
Payment of Transferred Cash Balances	0	0	0	83	0	83	83
Total Financing Payments	88,645	82,068	6,496	25,456	6,496	25,456	18,960
Net Cash Inflow/(Outflow) from Financing Activities	(30,141)	(22,367)	(6,398)	(4,689)	(6,398)	(4,689)	1,709
Net Increase/(Decrease) in Cash Held	(136,732)	(298,888)	(52,564)	8,061	(52,564)	8,061	60,625
Cash at Beginning Period	896,714	678,963	678,963	759,983	678,963	759,983	81,020
Cash at End of Period	759,983	380,075	626,399	768,043	626,399	768,043	141,644

Public Trading Enterprise Sector
Statement of Financial Performance

	2004-05	2005-06	September Quarter 2005		September Quarter 2005 Year to Date		
	Audited	Annual	Budget	Actual	Budget	Actual	Variance
	Outcome	Budget	\$'000	\$'000	\$'000	\$'000	\$'000
Revenue							
Government Payment for Outputs	30,671	32,611	7,707	7,707	7,707	7,707	0
User Charges - Non ACT Government	233,028	239,016	56,059	56,374	56,059	56,374	315
User Charges - ACT Government	84,006	83,843	22,124	22,414	22,124	22,414	290
Grants from Commonwealth	19,277	18,785	5,079	5,117	5,079	5,117	37
Interest Received	6,468	3,322	803	1,050	803	1,050	247
Revenue of Associates and Joint Ventures	51,986	45,707	18,611	20,930	18,611	20,930	2,319
Other Revenues	15,332	21,681	5,551	2,550	5,551	2,550	(3,001)
Resources Received Free of Charge	94	50	13	13	13	13	0
Total Revenue	440,863	445,015	115,948	116,154	115,948	116,154	206
Expenses							
Employee Expense	78,418	78,232	19,985	20,445	19,985	20,445	460
Superannuation Expenses	8,353	10,044	2,184	2,166	2,184	2,166	(18)
Supplies and Services	100,156	96,732	25,616	24,223	25,616	24,223	(1,393)
Depreciation and Amortisation	40,235	44,524	11,080	10,277	11,080	10,277	(803)
Borrowing Costs	29,231	30,593	8,029	7,559	8,029	7,559	(470)
Cost of Goods Sold	72,397	77,964	18,911	18,990	18,911	18,990	79
Grants and Purchased Services	4,741	8,815	2,331	1,324	2,331	1,324	(1,007)
Other Expense	24,201	25,688	3,833	3,856	3,833	3,856	22
Transfer Expenses	18,586	18,785	4,998	4,998	4,998	4,998	0
Total Expense	376,318	391,377	96,967	93,838	96,967	93,838	(3,129)
Operating Result before Extraordinary Items	64,545	53,638	18,981	22,316	18,981	22,316	3,335
Extraordinary Items (Net)	(792)	0	0	0	0	0	0
Income Tax Equivalent	(1,674)	(14,320)	(14,690)	(15,124)	(14,690)	(15,124)	(434)
Operating Result	62,079	39,318	4,291	7,192	4,291	7,192	2,901

Public Trading Enterprise Sector Statement of Financial Position

	<i>Audited Outcome</i> as at 30/6/05 \$'000	<i>Budgeted Balance</i> as at 30/6/06 \$'000	<i>YTD Result</i> as at 30/09/05 \$'000
Current Assets			
Cash	22,399	13,273	19,386
Receivables	40,416	29,288	35,242
Investments	30,792	27,260	42,039
Inventories	76	116	118
Other	10,097	10,320	22,068
Total Current Assets	103,780	80,257	118,852
Non Current Assets			
Receivables	26,252	27,915	26,252
Investments	372,895	390,731	386,034
Inventories	0	0	0
Property, Plant & Equipment	3,974,524	4,170,878	3,959,123
Intangibles	1,655	206	1,454
Works in Progress	56,794	20,621	65,230
Tax Asset	12,157	13,560	12,750
Other	42,110	43,859	42,110
Total Non Current Assets	4,486,387	4,667,770	4,492,953
Total Assets	4,590,167	4,748,027	4,611,806
Current Liabilities			
Creditors	34,097	38,629	38,656
Interest Bearing Liabilities	14,971	21,946	15,721
Finance Leases	736	771	726
Employee Entitlements	15,718	17,580	17,022
Other Provisions	22,775	12,861	24,065
Tax Liability	4,762	4,837	4,097
Other	7,713	3,045	5,666
Total Current Liabilities	100,773	99,669	105,954
Non Current Liabilities			
Creditors	1,008	903	8,154
Interest Bearing Liabilities	470,351	448,404	468,201
Finance Leases	1,974	1,429	1,803
Employee Benefits	22,917	23,206	22,884
Other Provisions	2,461	2,467	2,460
Tax Liability	9,077	20,161	16,561
Other	730	2,710	625
Total Non Current Liabilities	508,518	499,280	520,689
Total Liabilities	609,291	598,949	626,642
Net Assets	3,980,875	4,149,078	3,985,164
REPRESENTED BY FUNDS EMPLOYED			
Accumulated Funds	1,886,380	1,896,584	1,898,840
Reserve	2,094,495	2,252,494	2,086,324
TOTAL FUNDS EMPLOYED	3,980,875	4,149,078	3,985,164

Public Trading Enterprise Sector Cashflow Statement

	2004-05	2005-06	September Quarter 2005		September Quarter 2005 Year to Date		
	Audited Outcome	Annual Budget	Budget	Actual	Budget	Actual	Variance
	\$'000	\$'000	\$'000	\$'000	\$'000	\$'000	\$'000
Cash Flow from Operating Activities							
<i>Operating Receipts</i>							
Cash from Government for Operating	30,141	30,228	7,658	7,707	7,658	7,707	49
User Charges	321,498	325,436	77,248	82,405	77,248	82,405	5,157
Interest Received	6,782	3,322	848	1,150	848	1,150	302
Grants Received from the Commonwealth	19,298	18,785	5,072	5,116	5,072	5,116	44
Other Receipts	18,528	58,060	5,278	4,157	5,278	4,157	(1,121)
Extraordinary Receipts	0	500	0	0	0	0	0
Total Operating Receipts	396,246	436,331	96,103	100,535	96,103	100,535	4,432
<i>Operating Payments</i>							
Related to Employees	85,298	87,642	24,304	24,288	24,304	24,288	(17)
Related to Supplies and Services	105,641	98,526	34,203	36,878	34,203	36,878	2,676
Borrowing Costs	29,675	30,593	5,827	5,264	5,827	5,264	(562)
Grants and Purchased Services	4,708	8,815	2,330	1,506	2,330	1,506	(824)
Other	115,090	119,072	26,696	22,413	26,696	22,413	(4,284)
Territory Receipts to Government	18,586	18,785	4,998	4,998	4,998	4,998	0
Extraordinary Payments	0	0	0	0	0	0	0
Total Operating Payments	358,998	363,433	98,358	95,347	98,358	95,347	(3,011)
Net Cash Inflow/(Outflow) from Operating Activities	37,248	72,898	(2,254)	5,188	(2,254)	5,188	7,443
Cash Flows from Investing Activities							
<i>Investing Receipts</i>							
Sale of Property, Plant and Equipment	26,966	50,961	8,864	8,441	8,864	8,441	(423)
Sale/Maturity of Investments	78,950	5,671	7,914	7,529	7,914	7,529	(385)
Total Investing Receipts	105,916	56,632	16,777	15,970	16,777	15,970	(808)
<i>Investing Payments</i>							
Purchase of Property, Plant and Equipment	117,974	86,791	18,049	16,044	18,049	16,044	(2,005)
Purchase of Investments	4,699	369	92	92	92	92	0
Total Investing Payments	122,673	87,160	18,141	16,136	18,141	16,136	(2,005)
Net Cash Inflow/(Outflow) from Investing Activities	(16,758)	(30,528)	(1,364)	(167)	(1,364)	(167)	1,197
Cash Flows from Financing Activities							
<i>Financing Receipts</i>							
Capital Injection	8,945	14,020	4,300	4,550	4,300	4,550	250
Borrowings Received	25,035	45	12	8	12	8	(4)
Transferred Cash Balances	0	0	0	0	0	0	0
Finance Leases	0	0	0	0	0	0	0
Total Financing Receipts	33,980	14,065	4,312	4,558	4,312	4,558	246
<i>Financing Payments</i>							
Distributions to Government							
Dividends to Government	75,263	66,733	698	0	698	0	(698)
Repayment of Borrowings	14,177	15,542	1,608	1,409	1,608	1,409	(198)
Repayment of Finance leases	1,148	657	164	162	164	162	(2)
Total Financing Payments	90,589	82,932	2,470	1,571	2,470	1,571	(899)
Net Cash Inflow/(Outflow) from Financing Activities	(56,609)	(68,867)	1,842	2,987	1,842	2,987	1,145
Net Increase/(Decrease) in Cash Held	(36,118)	(26,497)	(1,776)	8,009	(1,776)	8,009	9,784
Cash at Beginning Period	35,185	47,402	47,402	(933)	47,402	(933)	(48,335)
Cash at End of Period	(933)	20,905	45,626	7,075	45,626	7,075	(38,551)

Australian Capital Territory Statement of Financial Performance

	2004-05	2005-06	September Quarter 2005		September Quarter 2005 Year to Date		
	Audited Outcome	Annual Budget	Budget	Actual	Budget	Actual	Variance
	\$'000	\$'000	\$'000	\$'000	\$'000	\$'000	\$'000
Revenue							
Taxes, Fees and Fines	769,056	833,827	297,103	337,574	297,103	337,574	40,470
User Charges - Non ACT Government	434,324	455,344	107,361	110,055	107,361	110,055	2,694
Grants from Commonwealth	1,108,802	1,148,171	275,237	271,999	275,237	271,999	(3,238)
Interest	64,259	49,624	13,197	16,319	13,197	16,319	3,121
Revenue of Associates and Joint Ventures	54,738	45,707	18,611	20,930	18,611	20,930	2,319
Other Revenues	395,469	322,226	69,747	124,916	69,747	124,916	55,169
Resources Received Free of Charge	274	0	0	0	0	0	0
Total Revenues	2,826,922	2,854,899	781,256	881,792	781,256	881,792	100,536
Expenses							
Employee Expense	1,011,184	1,062,309	263,538	265,141	263,538	265,141	1,604
Superannuation Expenses	290,222	321,754	80,059	80,622	80,059	80,622	563
Supplies and Services	646,012	667,699	159,410	155,856	159,410	155,856	(3,554)
Depreciation and Amortisation	204,494	217,012	52,845	50,996	52,845	50,996	(1,849)
Borrowing Costs	52,032	57,276	14,469	13,546	14,469	13,546	(923)
Cost of Goods Sold	89,517	91,754	21,533	21,765	21,533	21,765	232
Grants and Purchased Services	401,052	454,527	105,666	99,268	105,666	99,268	(6,398)
Other Expense	143,911	95,061	21,807	28,565	21,807	28,565	6,758
Expenses of Associates and Joint Ventures	0	0	0	0	0	0	0
Total Expense	2,838,423	2,967,392	719,326	715,759	719,326	715,759	(3,567)
Operating Result Before Extraordinary Items	(11,501)	(112,493)	61,930	166,033	61,930	166,033	104,102
Extraordinary Items (Net)	(69)	0	0	0	0	0	0
Operating Result	(11,570)	(112,493)	61,930	166,033	61,930	166,033	104,102

Australian Capital Territory Statement of Financial Position

	<i>Audited Outcome as at 30/6/05 \$'000</i>	<i>Budgeted Balance as at 30/6/06 \$'000</i>	<i>YTD Result 30/09/05 \$'000</i>
Current Assets			
Cash	87,714	84,831	69,886
Receivables	99,651	213,427	210,661
Investments	683,064	357,577	725,140
Inventories	50,452	39,481	51,014
Capital Work in Progress	4,055	44	4,060
Other	46,742	23,965	87,789
Total Current Assets	971,677	719,325	1,148,548
Non Current Assets			
Receivables	27,027	22,080	28,006
Investments	2,095,553	2,255,954	2,220,331
Inventories	53,843	90,552	63,539
Property, Plant & Equipment	9,819,923	10,204,773	9,788,291
Intangibles	24,151	30,149	27,878
Works in Progress	186,077	218,197	208,354
Other	124,485	95,983	82,553
Total Non Current Assets	12,331,059	12,917,688	12,418,952
Total Assets	13,302,737	13,637,013	13,567,501
Current Liabilities			
Payables	138,404	149,854	146,053
Interest Bearing Liabilities	85,476	24,965	86,449
Finance Leases	38,516	59,522	40,777
Employee Benefits	204,648	219,076	242,079
Other Provisions	11,303	13,960	34,704
Other	41,937	30,736	34,293
Total Current Liabilities	520,284	498,113	584,356
Non Current Liabilities			
Payables	107,524	102,331	121,024
Interest Bearing Liabilities	745,604	771,572	745,103
Finance Leases	61,573	101,963	66,286
Employee Benefits	2,588,294	2,817,769	2,615,869
Other Provisions	9,949	7,536	11,320
Other	4,572	2,779	3,524
Total Non Current Liabilities	3,517,517	3,803,950	3,563,126
Total Liabilities	4,037,801	4,302,063	4,147,482
Net Assets	9,264,936	9,334,949	9,420,018
REPRESENTED BY FUNDS EMPLOYED			
Accumulated Funds	6,473,898	6,408,923	6,662,507
Reserve	2,791,037	2,926,026	2,757,511
TOTAL FUNDS EMPLOYED	9,264,936	9,334,949	9,420,018

Australian Capital Territory Cashflow Statement

	2004-05	2005-06	September Quarter 2005		September Quarter 2005 Year to Date		
	Audited Outcome \$'000	Annual Budget \$'000	Budget \$'000	Actual \$'000	Budget \$'000	Actual \$'000	Variance \$'000
Cash Flow from Operating Activities							
<i>Operating Receipts</i>							
Taxes, Fees and Fines	767,080	834,598	242,094	258,918	242,094	258,918	16,824
User Charges	446,383	455,449	101,060	102,552	101,060	102,552	1,491
Interest Received	64,560	48,823	11,927	14,579	11,927	14,579	2,652
Grants Received from the Commonwealth	1,117,756	1,159,311	278,656	273,832	278,656	273,832	(4,824)
Other Receipts	390,724	399,766	91,062	88,496	91,062	88,496	(2,566)
Extraordinary Receipts	0	0	0	0	0	0	0
Total Operating Receipts	2,786,502	2,897,947	724,800	738,377	724,800	738,377	13,577
<i>Operating Payments</i>							
Related to Employees	1,099,794	1,140,046	280,177	275,993	280,177	275,993	(4,184)
Related to Supplies and Services	650,745	654,202	145,332	152,653	145,332	152,653	7,321
Borrowing Costs	52,831	57,276	11,049	12,558	11,049	12,558	1,509
Grants and Purchased Services	411,434	461,639	124,575	97,048	124,575	97,048	(27,527)
Other	411,249	397,288	136,020	137,896	136,020	137,896	1,876
Extraordinary Payments	526	0	0	0	0	0	0
Total Operating Payments	2,626,578	2,710,451	697,154	676,149	697,154	676,149	(21,005)
Net Cash Inflow/(Outflow) from Operating Activities	159,923	187,496	27,646	62,229	27,646	62,229	34,582
Cash Flows from Investing Activities							
<i>Investing Receipts</i>							
Sale of Property, Plant and Equipment	29,040	59,414	15,442	9,180	15,442	9,180	(6,262)
Sale/Maturity of Investments	156,371	1,787	8,429	9,777	8,429	9,777	1,348
Repayment of Home Loan Principal	7,154	2,117	529	529	529	529	0
Total Investing Receipts	192,567	63,318	24,400	19,486	24,400	19,486	(4,914)
<i>Investing Payments</i>							
Purchase of Property, Plant and Equipment	305,169	443,618	76,422	42,972	76,422	42,972	(33,450)
Purchase of Land and Intangibles	1,323	3,945	33	0	33	0	(33)
Purchase of Investments	209,634	101,815	19,556	15,661	19,556	15,661	(3,894)
Total Investing Payments	516,126	549,378	96,011	58,633	96,011	58,633	(37,378)
Net Cash Inflow/(Outflow) from Investing Activities	(323,558)	(486,060)	(71,611)	(39,147)	(71,611)	(39,147)	32,464
Cash Flows from Financing Activities							
<i>Financing Receipts</i>							
Borrowings Received	18,114	59,746	111	20,466	111	20,466	20,355
Finance Leases	40,425	0	0	0	0	0	0
Total Financing Receipts	58,539	59,746	111	20,466	111	20,466	20,355
<i>Financing Payments</i>							
Repayment of Borrowings	11,966	70,556	3,877	22,625	3,877	22,625	18,748
Repayment of Finance leases	55,787	16,011	2,809	2,920	2,809	2,920	111
Total Financing Payments	67,753	86,567	6,685	25,545	6,685	25,545	18,859
Net Cash Inflow/(Outflow) from Financing Activities	(9,214)	(26,821)	(6,575)	(5,079)	(6,575)	(5,079)	1,496
Net Increase/(Decrease) in Cash Held	(172,850)	(325,385)	(50,539)	18,002	(50,539)	18,002	68,542
Cash at Beginning Period	931,900	726,365	726,365	759,051	726,365	759,051	32,686
Cash at End of Period	759,051	400,980	675,826	777,053	675,826	777,053	101,227

General Government Sector - Departmental
Financial Year to Date ending 30 September 2005

	Year to Date Budget \$'000			Year to Date Actual \$'000			Variance \$'000		
	Revenue	Expense	Result	Revenue	Expense	Result	Revenue	Expense	Result
ACT Gambling and Racing Commission	14,406	14,347	59	14,406	14,347	59	0	0	0
ACT Health	161,472	163,027	(1,555)	163,339	163,625	(286)	1,867	598	1,269
ACT Insurance Authority	10,113	10,765	(652)	10,625	15,738	(5,113)	512	4,973	(4,461)
ACT Planning and Land Authority	8,609	9,415	(805)	8,661	8,450	211	52	(964)	1,016
ACT Public Cemeteries Trust	477	388	88	477	388	88	0	0	0
ACT WorkCover	1,878	2,040	(162)	1,878	2,040	(162)	0	0	0
Auditor-General	960	963	(3)	960	963	(3)	0	0	0
Australian Capital Tourism Corporation	4,917	4,917	0	4,917	4,917	0	0	0	0
Australian International Hotel School	0	0	0	1,430	1,431	(1)	1,430	1,431	(1)
Canberra Institute of Technology	19,318	22,165	(2,847)	19,465	22,439	(2,974)	147	274	(127)
Chief Minister's Department	17,629	19,508	(1,879)	17,515	18,819	(1,304)	(114)	(689)	575
Cultural Facilities Corporation	2,723	3,067	(343)	2,723	3,067	(343)	0	0	0
Department of Disability, Housing and Community Services	24,587	24,717	(130)	24,648	24,046	602	60	(671)	732
Department of Education and Training	120,427	125,984	(5,557)	124,551	124,658	(107)	4,124	(1,326)	5,450
Department for Economic Development	12,864	13,753	(889)	13,316	11,128	2,188	452	(2,625)	3,077
Department of Justice and Community Safety	22,235	23,171	(937)	22,777	21,487	1,290	543	(1,684)	2,227
Department of Treasury	10,006	10,862	(856)	10,146	8,401	1,745	140	(2,461)	2,601
Department of Urban Services	80,357	91,607	(11,250)	80,610	88,335	(7,725)	253	(3,272)	3,525
ACT Emergency Services Authority	19,811	16,868	2,943	19,797	16,903	2,894	(14)	35	(49)
Exhibition Park in Canberra	632	702	(70)	632	702	(70)	0	0	0
Health Promotion Fund	680	684	(4)	680	684	(4)	0	0	0
HealthPACT	1,921	1,225	696	1,921	1,225	696	0	0	0
Independent Competition and Regulatory Commission.	615	620	(5)	615	620	(5)	0	0	0
InTACT	17,385	17,367	18	17,650	17,730	(80)	265	363	(98)
Legal Aid Commission	1,915	2,076	(162)	1,915	2,076	(162)	0	0	0
Legislative Assembly Secretariat	1,360	1,369	(9)	1,360	1,369	(9)	0	0	0
Land Development Agency	36,075	15,565	20,510	23,544	17,180	6,364	(12,531)	1,615	(14,146)
Office for Children Youth and Family Support	16,900	17,791	(892)	17,257	17,351	(95)	357	(440)	797
Public Trustee for the ACT	719	682	37	719	682	37	0	0	0
Rhodium Asset Solutions	5,042	4,965	77	5,066	4,792	274	25	(173)	197
TotalCare	0	0	0	0	0	0	0	0	0
Workers Compensation Fund	157	45	112	157	45	112	0	0	0

General Government Sector - Territorial
Financial Year to Date ending 30 September 2005

	Year to Date Budget \$'000			Year to Date Actual \$'000			Variance \$'000		
	Revenue	Expense	Result	Revenue	Expense	Result	Revenue	Expense	Result
ACT Executive	1,232	1,231	1	1,232	1,231	1	0	0	0
ACT Health	34,124	34,124	0	33,209	33,209	0	(915)	(915)	(0)
ACT Planning and Land Authority	3,632	3,632	0	17,079	17,079	0	13,447	13,447	0
ACT Superannuation Unit	29,537	73,132	(43,595)	101,051	72,699	28,352	71,514	(434)	71,948
ACT WorkCover	220	220	0	220	220	0	0	0	0
Central Financing Unit	603,033	668,614	(65,581)	700,938	616,449	84,489	97,905	(52,164)	150,070
Chief Minister's Department	6,525	6,525	0	5,199	5,199	0	(1,326)	(1,326)	0
Department of Disability, Housing and Community Services	10,492	10,492	0	9,055	9,055	(0)	(1,436)	(1,436)	(0)
Department of Education and Training	78,344	78,343	1	73,491	73,491	0	(4,853)	(4,852)	(1)
Department of Justice and Community Safety	30,422	31,560	(1,138)	29,940	30,063	(123)	(482)	(1,497)	1,015
Department of Treasury	488,795	488,795	0	513,028	513,028	0	24,233	24,233	0
Department of Urban Services	28,335	28,335	(0)	30,285	30,285	0	1,951	1,951	0
Legislative Assembly Secretariat	1,075	1,239	(164)	1,075	1,239	(164)	0	0	0

Public Trading Enterprises - *Departmental*
Financial Year to Date ending 30 September 2005

	Year to Date Budget \$'000			Year to Date Actual \$'000			Variance \$'000		
	Revenue	Expense	Result	Revenue	Expense	Result	Revenue	Expense	Result
ACT Forests	911	3,081	(2,170)	1,099	3,176	(2,077)	188	95	93
Housing ACT	26,417	27,855	(1,438)	25,742	24,394	1,348	(675)	(3,461)	2,786
ACT Electricity and Water	56,590	40,713	15,877	56,652	40,081	16,571	62	(632)	694
ACTION Authority	19,592	20,899	(1,307)	19,825	21,934	(2,109)	234	1,036	(802)
ACTTAB	6,609	6,177	432	7,311	6,535	776	703	359	344
CIT Solutions	2,285	2,213	72	2,285	2,213	72	0	0	0
Stadiums Authority	811	935	(124)	811	935	(124)	0	0	0

Public Trading Enterprises - *Territorial*
Financial Year to Date ending 30 September 2005

	Year to Date Budget \$'000			Year to Date Actual \$'000			Variance \$'000		
	Revenue	Expense	Result	Revenue	Expense	Result	Revenue	Expense	Result
Housing ACT	4,998	4,998	0	4,998	4,998	0	0	0	0